

blanc
PROMOTIE TEXTIEL



Just Hoods[®]

AWDis

THE HOME OF THE HOODIE

THE HOODIE IS A STAPLE OF ANY YOUNG URBANITE'S WARDROBE, AND FOR FOURTEEN YEARS JUST HOODS® HAVE SUPPLIED STREETWEAR START-UPS, SPORTS TEAMS AND MUSICIANS WITH TOP QUALITY, CONTEMPORARY DESIGNS IN THE LARGEST VARIETY OF COLOURS AVAILABLE.



WE ALWAYS DO THINGS THE RIGHT WAY, WHICH IS WHY WE ONLY USE WORLDWIDE RESPONSIBLE ACCREDITED PRODUCTION (WRAP) AND SEDEX CERTIFIED FACTORIES.

AS PART OF JUST HOODS SUSTAINABILITY JOURNEY, ALL GARMENTS ARE OFFICIALLY PETA-APPROVED VEGAN AND 100% FREE OF ANY ANIMAL INGREDIENTS. CHECK OUT OUR WEBSITE FOR MORE INFORMATION.

f@JUSTHOODS @JUSTHOODS @JUSTHOODS

WWW.JUSTHOODSBYAWDIS.COM

FASHION
SHOULDN'T
COST THE
EARTH



JH250 Organic Zoodie/
Heather Grey Page 64



JH201 Organic Hoodie/Baby Pink Page 14
JH201 Organic Hoodie/French Navy Page 14

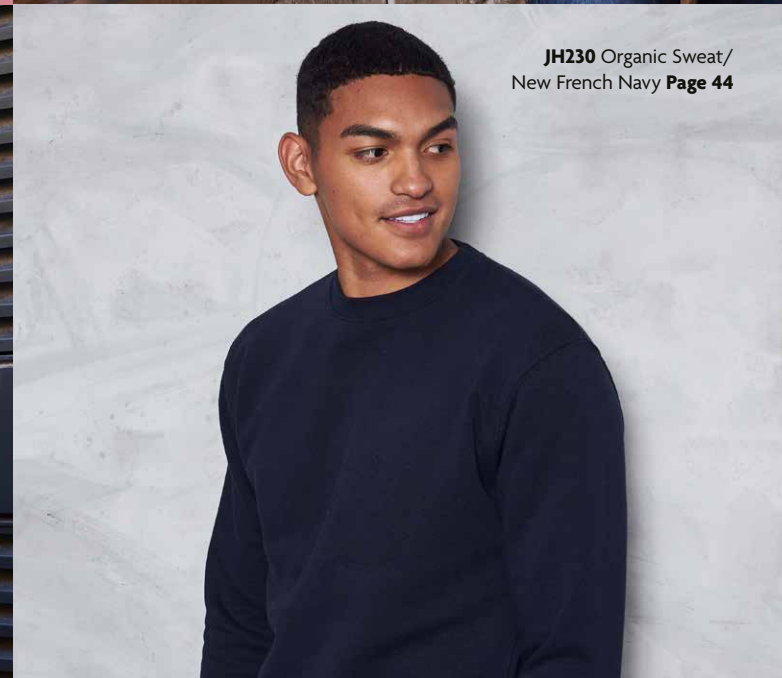
ORGANIC & RECYCLED
• **SUSTAINABLE** •
Recycled
ORGANIC & RECYCLED



JH201J Kids
Organic Hoodie/
Burgundy Page 86



JH201 Organic Hoodie/
White Page 14



JH230 Organic Sweat/
New French Navy Page 44

IT'S ALL
ABOUT BEING
ORGANIC

CONTENTS

HOODIES

JH001 College Hoodie <small>NEW COLOURS</small>	page 11
JH001F Women's College Hoodie	page 12
JH201 Organic Hoodie <small>ORGANIC</small>	page 14
JH002 SupaSoft Hoodie	page 15
JH003 Varsity Hoodie	page 17
JH004 Electric Hoodie	page 18
JH005 Women's Longline Hoodie	page 19
JH008 Heather Hoodie	page 19
JH006 Sports Polyester Hoodie	page 20
JH009 Baseball Hoodies	page 21
JH011 Epic Print Hoodie	page 22
JH012 Cosmic Blend Hoodie	page 23
JH013 Superbright Hoodie	page 23
JH014 Camo Hoodie	page 24
JH015 Hoodie Dress	page 25
JH016 Women's Cropped Hoodie	page 26
JH017 Surf Hoodie	page 27
JH018 Nautical Stripe Hoodie	page 27
JH019 Distressed Hoodie	page 28
JH020 Street Hoodie	page 28
JH021 Cross Neck Hoodie <small>NEW COLOURS</small>	page 30
JH022 Tie-Dye Hoodie <small>NEW STYLE</small>	page 32
JH090 Washed Hoodie	page 34
JH100 Chunky Hoodie	page 35
JH101 Graduate Heavyweight Hoodie	page 36
JH103 Game Day Hoodie	page 37

SWEATS

JH030 AWDIs Sweat <small>NEW COLOURS</small>	page 41
JH030F Women's AWDIs Sweat <small>NEW STYLE</small>	page 42
JH230 Organic Sweat <small>ORGANIC</small>	page 44
JH033 Baseball Sweat	page 45
JH035 Women's Cropped Sweat	page 46
JH036 Women's Fashion Sweat	page 47
JH038 Colour Block Sweat	page 47
JH037 Women's Cropped ¼ Zip Sweat <small>NEW STYLE</small>	page 48
JH046 Sophomore ¼ Zip Sweat	page 50
JH047 Fresher Full Zip Sweat	page 51
JH093 Washed Sweat	page 52
JH030 Graduate Heavyweight Sweat	page 53

JACKETS

JH043 Varsity Jacket	page 56
JH041 College Jacket	page 58
JH049 Varsity Puffer Jacket	page 59

ZOODIES

JH050 Zoodie	page 62
JH250 Organic Zoodie <small>ORGANIC</small>	page 64
JH051 Urban Varsity Zoodie	page 65
JH052 Chunky Zoodie	page 66
JH053 Varsity Jacket	page 67
JH055 Women's Zoodie	page 68
JH057 Sleeveless Zoodie	page 69
JH058 Heather Zoodie	page 69
JH059 Retro Zoodie	page 70
JH063 Baseball Zoodie	page 71
JH065 Women's Fashion Cropped Zoodie	page 72
JH066 Sports Polyester Zoodie	page 74
JH150 Graduate Heavyweight Zoodie	page 75

PANTS & SHORTS

JH072 College Cuffed Jogpant <small>NEW COLOURS</small>	page 78
JH074 Tapered Track Pant	page 80
JH080 Campus Shorts	page 80
JH077 Women's Tapered Track Pant	page 81

KIDS

JH001J Kids Hoodie	page 84
JH201J Kids Organic Hoodie <small>ORGANIC</small>	page 86
JH003J Kids Varsity Hoodie	page 87
JH004J Kids Electric Hoodie	page 88
JH006J Kids Sports Polyester Hoodie	page 88
JH030J Kids AWDIs Sweat <small>NEW COLOURS</small>	page 89
JH009J Kids Baseball Hoodie	page 90
JH014J Kids Camo Hoodie	page 91
JH043J Kids Varsity Jacket	page 92
JH050J Kids Zoodie	page 93
JH072J Kids Cuffed Jogpants	page 94
JH074J Kids Tapered Track Pant	page 95

GUIDES

Print Guide	page 96
Core Colour Guide	page 98
Contrast Colour Guide	page 100
Our fabrics	page 102
PMS Colour Guide	page 103
Fit Guide	page 104
Connect Complementary styles	page 106



JH001 College Hoodie/Caramel Latte **Page 11**
 JH001F Womens College Hoodie/Ash **Page 12**
 JH001 College Hoodie/Ginger Biscuit **Page 11**



JH001 College Hoodie/Mustard Page 11
 JH001F College Hoodie/Jade Page 12



JH001 College Hoodie/
 Pumpkin Pie Page 11

HOODIES

JH001 College Hoodie <small>NEW COLOURS</small>	page 11
JH001F Women's College Hoodie	page 12
JH201 Organic Hoodie <small>ORGANIC</small>	page 14
JH002 SupaSoft Hoodie	page 15
JH003 Varsity Hoodie	page 17
JH004 Electric Hoodie	page 18
JH005 Women's LongLine Hoodie	page 19
JH008 Heather Hoodie	page 19
JH006 Sports Polyester Hoodie	page 20
JH009 Baseball Hoodies	page 21
JH011 Epic Print Hoodie	page 22
JH012 Cosmic Blend Hoodie	page 23
JH013 Superbright Hoodie	page 23
JH014 Camo Hoodie	page 24
JH015 Hoodie Dress	page 25
JH016 Women's Cropped Hoodie	page 26
JH017 Surf Hoodie	page 27
JH018 Nautical Stripe Hoodie	page 27
JH019 Distressed Hoodie	page 28
JH020 Street Hoodie	page 28
JH021 Cross Neck Hoodie <small>NEW COLOURS</small>	page 31
JH022 Tie-Dye Hoodie <small>NEW STYLE</small>	page 33
JH090 Washed Hoodie	page 34
JH100 Chunky Hoodie	page 35
JH101 Graduate Heavyweight Hoodie	page 36
JH103 Game Day Hoodie	page 37



JH001 College Hoodie/Caramel Latte Page 11
 JH001 College Hoodie/Peppermint Page 11
 JH001 College Hoodie/Deep Sea Blue Page 11
 JH001 College Hoodie/Dusty Rose Page 11



JH022 Tie-Dye Hoodie/
 Pastel Sunset Dip Page 33
 JH022 Tie-Dye Hoodie/
 Grey Pink Marble Page 33

MUST HAVE HOODIES



Dusty Rose
New Colour

Ginger Biscuit
New Colour



Mustard

CONTEMPORARY EVERYDAY STYLE

JH001 XS-5XL* COLLEGE HOODIE NEW COLOURS NEW SIZES

Key Features

- 79 great colours
- Brushed inner fleece
- Double fabric hood
- Kangaroo pouch pocket

Specification

- 80% Ringspun Cotton / 20% Polyester
- 52% Ringspun Cotton / 48% Polyester (Charcoal)
- 75% Ringspun Cotton / 25% Polyester (Heather Grey)
- 70% Ringspun Cotton / 30% Polyester (Smoke Colours)

Fabric Weight

- 280gsm
- Women's sizes **pg.12**
- Kids sizes **pg.84**

*All colours available in XS-3XL – available in 5XL on selected colours

5XL			5XL			5XL	
Arctic White	Ash	Heather Grey	Moon dust Grey	Steel Grey	Shark Grey	Charcoal	Storm Grey
Black Smoke	Jet Black	Deep Black	Baby Pink	Dusty Pink	Dusty Rose	Candyfloss Pink	Lipstick Pink
Hot Pink	Cranberry	True Violet	Lavender	Pinky Purple	Magenta Magic	Ultra Violet	Purple
Wild Mulberry	Dusty Purple	Plum	Burgundy Smoke	Burgundy	Fine Red	Brick Red	Red Rust
Red Hot Chili	Sunset Orange	Burnt Orange	Ginger Biscuit	Pumpkin Pie	Orange Crush	Mustard	Gold
Sun Yellow	Sherbet Lemon	Vanilla Milkshake	Peach Perfect	Nude	Desert Sand	Mocha Brown	Caramel Latte
Caramel Toffee	Hot Chocolate	Apple Green	Lime Green	Alien Green	Spring Green	Kelly Green	Earthy Green
Moss Green	Dusty Green	Combat Green	Olive Green	Bottle Green	Forest Green	Peppermint	Jade
Deep Sea Blue	Sky Blue	Cornflower Blue	Turquoise Surf	Hawaiian Blue	Dusty Blue	Tropical Blue	Sapphire Blue
Royal Blue	Airforce Blue	Denim Blue	Ink Blue	Navy Smoke	Oxford Navy	New French Navy	

JH001F XS-XXL
 WOMEN'S
 COLLEGE HOODIE

Key Features

- 33 great colours
- Brushed inner fleece
- Double fabric hood

Specification

- 80% Ringspun Cotton / 20% Polyester
- 52% Ringspun Cotton / 48% Polyester (Charcoal)
- 75% Ringspun Cotton / 25% Polyester (Heather Grey)

Fabric Weight

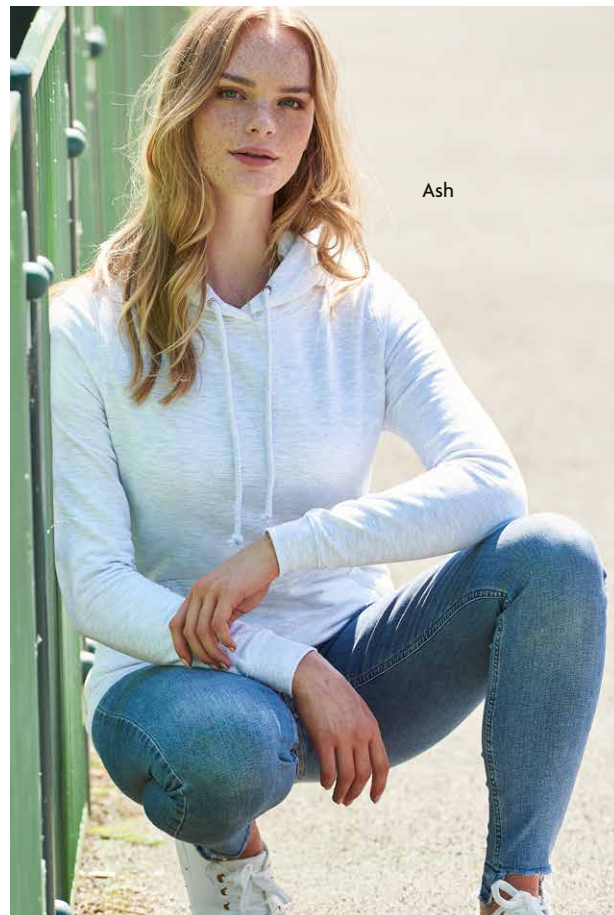
- 280gsm
- Mens sizes **pg.11**
- Kids sizes **pg.84**



COSY AND SUPER COMFY

Sapphire Blue

Baby Pink



Ash



Baby Pink

New French Navy

JH002 XS-XXL SUPASOFT HOODIE

Key Features

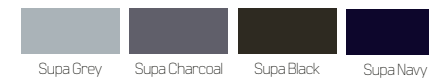
- Twin needle stitching detail
- 3 panel double fabric hood
- Soft feel peached Cotton faced fabric

Specification

- 80% Ringspun Cotton / 20% Polyester
- 52% Ringspun Cotton / 48% Polyester (Charcoal)
- 75% Ringspun Cotton / 25% Polyester (Heather Grey)

Fabric Weight

- 280gsm



Supa Navy



Arctic White

JH201 XS-3XL ORGANIC HOODIE

Key Features

- 12 great colours
- Twin needle stitching detail
- Double fabric hood

Specification

- 80% Organic Cotton / 20% Recycled Polyester
- 75% Organic Cotton / 25% Recycled Polyester (Heather Grey)

Fabric Weight

- 280gsm
- Kids sizes **pg.86**



Supa Navy



Burgundy /
Charcoal



Purple /
Sun Yellow

Sky Blue
/ Arctic
White

THE HOODIE STYLE

JH003 XS-5XL* VARSITY HOODIE

Key Features

- 47 great colours
- Twin needle stitching detail
- Double fabric hood
- Kangaroo pouch pocket

Specification

- 80% Ringspun Cotton / 20% Polyester
- 52% Ringspun Cotton / 48% Polyester (Charcoal)
- 75% Ringspun Cotton / 25% Polyester (Heather Grey)
- 70% Ringspun Cotton / 30% Polyester (Smoke Colours)

Fabric Weight

- 280gsm
- Kids sizes **pg.87**

*All colours available in S-XXL
– available in XS, 3XL and 5XL
on selected colours



Electric Yellow



Heather Grey

JH005 XS-XL WOMEN'S LONGLINE HOODIE

Key Features

- Women's fit
- Twin needle stitching detail
- Three panel double fabric hood

Specification

- 80% Ringspun Cotton / 20% Polyester
- 75% Ringspun Cotton / 25% Polyester (Heather Grey)

Fabric Weight

- 280gsm



Heather Grey

Jet Black



Electric Orange

JH004 S-XXL ELECTRIC HOODIE

Key Features

- Vibrant eye catching colours
- Twin needle stitching detail
- Flat lace drawcords

Specification

- 85% Polyester / 15% Ringspun Cotton

Fabric Weight

- 280gsm

- Kids sizes **pg.88**



Electric Pink

Electric Orange

Electric Yellow

Electric Green

JH008 S-XXL HEATHER HOODIE

Key Features

- Slim fit lightweight hoodie
- Soft feel lightweight fabric
- Twin needle stitching detail

Specification

- 52% Ringspun Cotton / 48% Polyester

Fabric Weight

- 225gsm



Black Heather

Navy Heather



Navy Heather



JH006 S-3XL
SPORTS
POLYESTER HOODIE

Key Features

- Sporty fit
- Twin needle stitching detail
- Double fabric hood

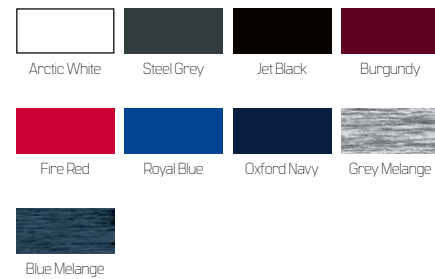
Specification

- 100% Polyester

Fabric Weight

- 200gsm

- Kids sizes **pg.88**



JH009 S-XXL
BASEBALL HOODIE

Key Features

- Twin needle stitching detail
- Contrast raglan sleeves and drawcords
- Contrast double fabric hood

Specification

- 80% Ringspun Cotton / 20% Polyester
- 52% Ringspun Cotton / 48% Polyester (Charcoal)
- 75% Ringspun Cotton / 25% Polyester (Heather Grey)
- 70% Ringspun Cotton / 30% Polyester (Camo Colours)

Fabric Weight

- 280gsm

- Kids sizes **pg.90**



JH011 XS-3XL

EPIC PRINT HOODIE

Key Features

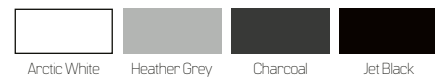
- Twin needle stitching detail
- Two panel double fabric hood
- No pocket for maximum print surface area

Specification

- 80% Ringspun Cotton / 20% Polyester
- 52% Ringspun Cotton / 48% Polyester (Charcoal)
- 75% Ringspun Cotton / 25% Polyester (Heather Grey)

Fabric Weight

- 280gsm



Charcoal



Charcoal



Cosmic Red / Black

JH012 XS-XXL

COSMIC BLEND HOODIE

Key Features

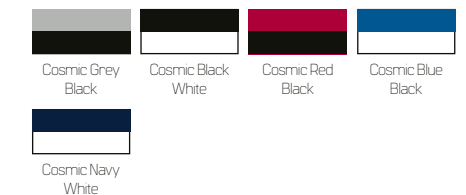
- Twin needle stitching detail
- Double fabric hood
- All over melange effect fabric

Specification

- 70% Ringspun Cotton / 30% Polyester

Fabric Weight

- 280gsm



JH013 S-XXL

SUPERBRIGHT HOODIE

Key Features

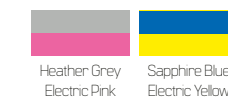
- Twin needle stitching detail
- Double fabric hood with contrast inner in electric colours

Specification

- 80% Ringspun Cotton / 20% Polyester (Body)
- 80% Polyester / 20% Ringspun Cotton (Hood Lining)
- 75% Ringspun Cotton / 25% Polyester (Heather Grey)

Fabric Weight

- 280gsm



Sapphire Blue / Electric Yellow



Grey Camo



Green Camo

STYLE SETTER

JH015 XS-XXL HOODIE DRESS

Key Features

- Women's relaxed fit
- Longline cut design
- Double fabric hood

Specification

- 80% Ringspun Cotton / 20% Polyester
- 75% Ringspun Cotton / 25% Polyester (Heather Grey)

Fabric Weight

- 280gsm



Heather Grey

Jet Black



Jet Black



Green Camo

JH014 XS-XXL CAMO HOODIE

Key Features

- Twin needle stitching detail
- Classic all over camouflage print design
- Double fabric hood

Specification

- 70% Ringspun Cotton / 30% Polyester

Fabric Weight

- 280gsm
- Kids sizes **pg.91**



Grey Camo

Black Camo

Red Camo

Green Camo



Blue Camo

STYLISH CROP

JH016 XXS-XL WOMEN'S CROPPED HOODIE

Key Features

- Women's relaxed fit
- Cropped cut with drop shoulder design
- Twin needle stitching detail
- Raw edge hem with cover stitching

Specification

- 80% Ringspun Cotton / 20% Polyester
- 75% Ringspun Cotton / 25% Polyester (Heather Grey)

Fabric Weight

- 280gsm



JH017 XS-3XL SURF HOODIE

Key Features

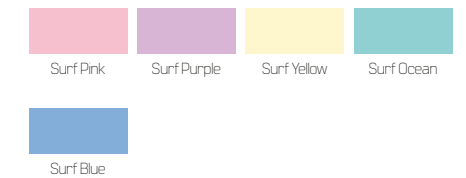
- Twin needle stitching detail
- Melange effect fabric
- Relaxed fit
- Double fabric hood

Specification

- 80% Ringspun Cotton / 20% Polyester

Fabric Weight

- 280gsm



JH018 XS-XXL NAUTICAL STRIPE HOODIE

Key Features

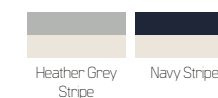
- Stripe design
- French terry
- Relaxed fit
- Double fabric hood

Specification

- 80% Ringspun Cotton / 20% Polyester (Navy Stripe)
- 90% Cotton / 10% Viscose (Heather Grey Stripe)

Fabric Weight

- 280gsm





JH019 S-XXL DISTRESSED HOODIE

Key Features

- Distressed finish
- French Terry
- Double fabric hood

Specification

- 80% Ringspun Cotton / 20% Polyester (Jet Black)
- 70% Cotton / 27% Polyester / 3% Viscose (Heather Grey)

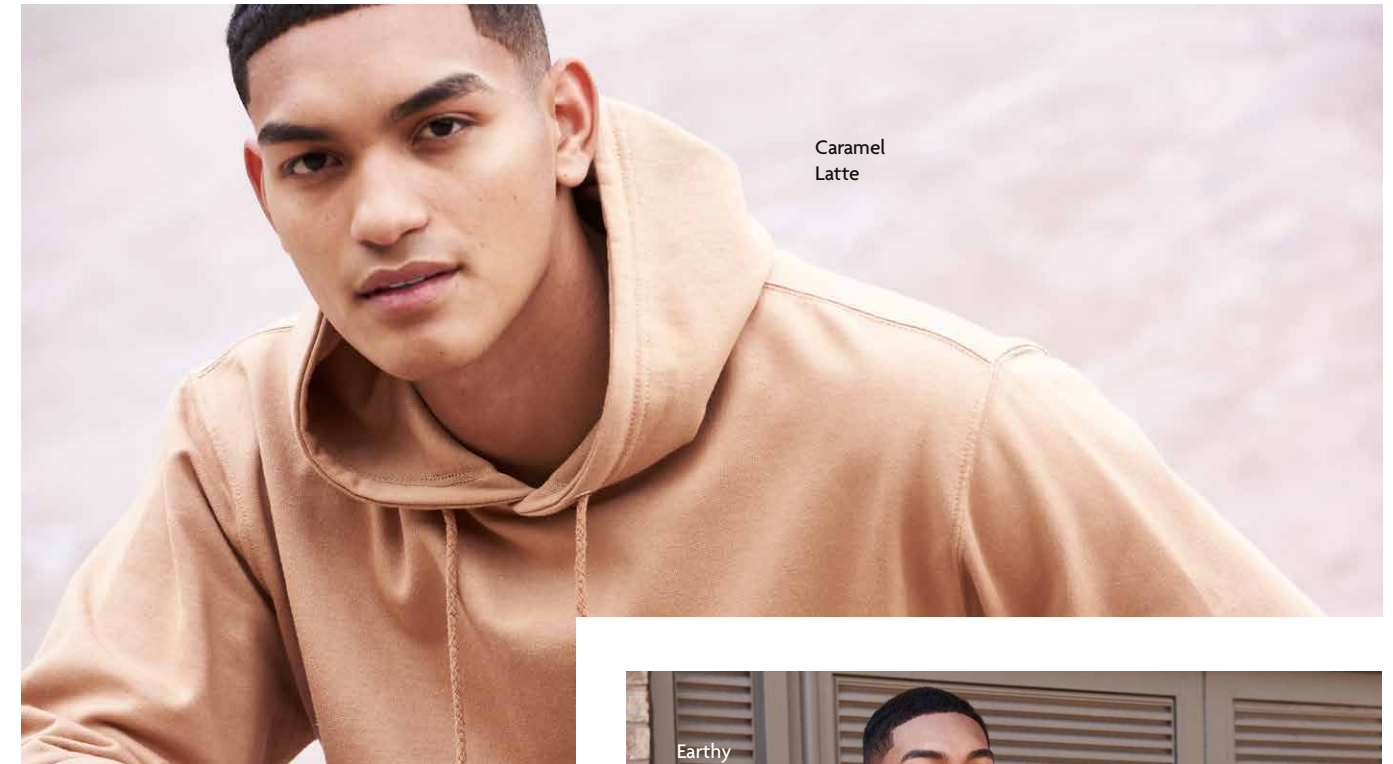
Fabric Weight

- 280gsm



Heather Grey Jet Black

5 NEW TREND LED COLOURS FOR 2022



Caramel Latte

JH020 S-XXL STREET HOODIE

Key Features

- Heavyweight hoodie
- Twin needle stitching detail
- Three panel double fabric hood
- Thumb holes in the cuffs

Specification

- 70% Ringspun Cotton / 30% Polyester
- 52% Ringspun Cotton / 48% Polyester (Charcoal)
- 65% Ringspun Cotton / 35% Polyester (Heather Grey)

Fabric Weight

- 330gsm



Heather Grey Charcoal Jet Black Fire Red



Red Hot Chili New French Navy



New French Navy



Dusty Rose

Ginger Biscuit



Pumpkin Pie



Earthy Green



Ginger Biscuit Pumpkin Pie Caramel Latte Earthy Green Dusty Rose

- JH001 College Hoodie/Caramel Latte **Page 11**
- JH001 College Hoodie/Pumpkin Pie **page 11**
- JH001 College Hoodie/Dusty Rose **page 11**
- JH001 College Hoodie/Ginger Biscuit **page 11**
- JH030 AWDIs Sweat/Earthy Green **page 41**

JH021 XS-XXL*
CROSS NECK
HOODIE
NEW COLOURS
NEW SIZES

Key Features

- Heavyweight hoodie
- Cross over neck detail
- Twin needle stitching detail
- Three panel double fabric hood
- Thumb holes in the cuffs

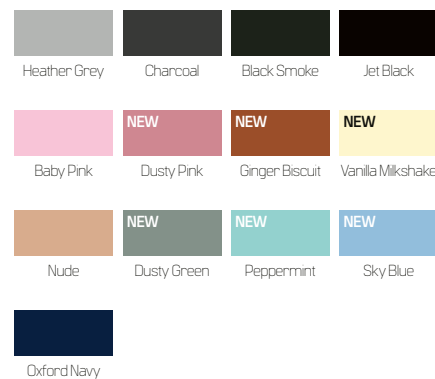
Specification

- 70% Ringspun Cotton / 30% Polyester
- 52% Ringspun Cotton / 48% Polyester (Charcoal)
- 65% Ringspun Cotton / 35% Polyester (Heather Grey)
- 65% Ringspun Cotton / 35% Polyester (Black Smoke)

Fabric Weight

- 330gsm

*All colours now available from XS



GET COMFORTABLE
IN HOODS





Tie-Dye Swirl

JH022 XS-XXL
TIE-DYE HOODIE
NEW STYLE

Key Features

- Relaxed fit
- Twin needle stitching detail
- Double fabric hood with round drawcords
- Kangaroo pouch pocket

Specification

- 80% Ringspun Cotton / 20% Polyester

Fabric Weight

- 280gsm

Due to the unique method of dying some variation in colour may occur



Blue Cloud

Grey Pink Marble

Tie-Dye Swirl

Pastel Sunset Dip



Blue Cloud



**NEW
STYLE**

Grey Pink
Marble

Pastel
Sunset Dip

TIE-DYE STYLE



Washed Charcoal

VINTAGE WASH

JH100 XS-XXL CHUNKY HOODIE

Key Features

- Pull over hoodie
- Side panels for stylish fit
- Overlock stitching detail throughout
- Double fabric hood with heather grey waffle fabric inner
- Side pockets

Specification

- 80% Ringspun Cotton / 20% Polyester
- 52% Ringspun Cotton / 48% Polyester (Charcoal)
- 75% Ringspun Cotton / 25% Polyester (Heather Grey)

Fabric Weight

- 400gsm



Jet Black

JH074 Tapered Track Pant/
Heather Grey **Page 80**



Washed Purple

JH090 XS-3XL WASHED HOODIE

Key Features

- Washed effect
- Soft touch
- Twin needle stitching detail
- Double fabric hood

Specification

- 55% Ringspun Cotton / 45% Polyester

Fabric Weight

- 280gsm



Jet Black



New French Navy

JH101 XS-3XL GRADUATE HEAVYWEIGHT HOODIE

Key Features

- Heavyweight hoodie
- Twin needle stitching detail
- 3 panel fabric hood with single jersey fabric inner

Specification

- 70% Ringspun Cotton / 30% Polyester
- 45% Ringspun Cotton / 55% Polyester (Charcoal)
- 65% Ringspun Cotton / 35% Polyester (Heather Grey)

Fabric Weight

- 330gsm



Arctic White

GAME DAY READY

JH103 XS-3XL GAME DAY HOODIE

Key Features

- Heavyweight Hoodie
- Double fabric hood with single jersey contrast inner
- Twin needle stitching detail

Specification

- 70% Ringspun Cotton / 30% Polyester
- 65% Ringspun Cotton / 35% Polyester (Heather Grey)

Fabric Weight

- 330gsm



New French Navy / Heather Grey



New French Navy / Heather Grey

JH074 Tapered Track Pant/Heather Grey
Page 80



JH030 ADWis Sweat/
Earthy Green Page 41
JH030F Women's ADWis
Sweat/Artic White Page 42



JH030 ADWis Sweat/
Burgundy Page 41
JH072 College Cuffed Jogpant/
Burgundy Page 78

SWEATS

JH030 AWDIs Sweat NEW COLOURS	page 41
JH030F Women's AWDIs Sweat NEW STYLE	page 42
JH230 Organic Sweat ORGANIC	page 44
JH033 Baseball Sweat	page 45
JH035 Women's Cropped Sweat	page 46
JH036 Women's Fashion Sweat	page 47
JH038 Colour Block Sweat	page 47
JH037 Women's Cropped ¼ Zip Sweat NEW STYLE	page 48
JH046 Sophomore ¼ Zip Sweat	page 50
JH047 Fresher Full Zip Sweat	page 51
JH093 Washed Sweat	page 52
JH030 Graduate Heavyweight Sweat	page 53



JH030F Women's AWDIs
Sweat Page 42



JH037 Women's
Cropped ¼ Zip Sweat/
Dusty Rose Page 48
JH037 Women's
Cropped ¼ Zip Sweat/
Lavender Page 48

**NEW
STYLE**



JH030 AWDIs Sweat/
Desert Sand Page 41

**MUST HAVE
SWEATS**



JH030 XS-5XL*
 AWDIs SWEAT
NEW COLOURS
NEW SIZES

Key Features

- 51 great colours
- Set in sleeves
- Stylish fit
- Brushed inner fleece

Specification

- 80% Ringspun Cotton / 20% Polyester
- 52% Ringspun Cotton / 48% Polyester (Charcoal)
- 75% Ringspun Cotton / 25% Polyester (Heather Grey)
- 70% Ringspun Cotton / 30% Polyester (Black Smoke)

Fabric Weight

- 280gsm
- Women's sizes **pg.42**
- Kids sizes **pg.89**

*All colours available in XS-XXL
 – available in 3XL and 5XL
 on selected colours

5XL	Ash	5XL	Moon dust Grey	Steel Grey	5XL	Charcoal	Storm Grey	Black Smoke				
Arctic White	Heather Grey	Jet Black	Deep Black	5XL	Baby Pink	Dusty Pink	NEW	Dusty Rose	Candyfloss Pink	Hot Pink	3XL	Cranberry
NEW	Lavender	3XL	Purple	Plum	5XL	Burgundy	5XL	Fire Red	Red Hot Chili	Burnt Orange	NEW	Ginger Biscuit
NEW	Pumpkin Pie	Orange Crush	NEW	Mustard	Gold	Sun Yellow	Vanilla Milkshake	Nude	NEW	Desert Sand		
NEW	Caramel Latte	Hot Chocolate	Lime Green	Kelly Green	NEW	Earthy Green	NEW	Dusty Green	Olive Green	Bottle Green		
Forest Green	Peppermint	Jade	Sky Blue	Turquoise Surf	Hawaiian Blue	5XL	Sapphire Blue	3XL	Royal Blue			
Airforce Blue	Oxford Navy	5XL	New French Navy									

JH030F XS-XXL

WOMEN'S
AWDis SWEAT

NEW STYLE

Key Features

- Crew neckline
- Soft cotton face
- Brushed inner fleece
- Ribbed cuffs and hem

Specification

- 80% Ringspun Cotton / 20% Polyester
- 75% Ringspun Cotton / 25% Polyester (Heather Grey)

Fabric Weight

- 280gsm
- Mens sizes **pg.41**
- Kids sizes **pg.89**



**NEW
STYLE**

Arctic White

QUALITY SWEATS



ORGANIC & RECYCLED
 Organic
SUSTAINABLE
 Recycled
 ORGANIC & RECYCLED

JH230 XS-XXL ORGANIC SWEAT

Key Features

- Crew neck sweat
- Set in sleeves
- Taped neck
- Stylish fit

Specification

- 80% Organic Cotton / 20% Recycled Polyester
- 75% Organic Cotton / 25% Recycled Polyester (Heather Grey)

Fabric Weight

- 280gsm



MATCH READY

JH033 S-XXL BASEBALL SWEAT

Key Features

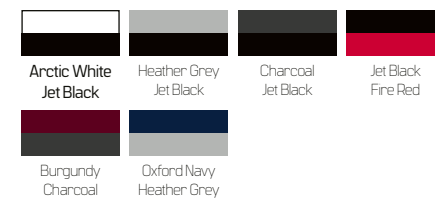
- Twin needle stitching detail
- Retro stylish fit
- Contrast raglan sleeves

Specification

- 80% Ringspun Cotton / 20% Polyester
- 52% Ringspun Cotton / 48% Polyester (Charcoal)
- 75% Ringspun Cotton / 25% Polyester (Heather Grey)

Fabric Weight

- 280gsm





Dusty Pink



Charcoal

JH036 XS-XL WOMEN'S FASHION SWEAT

Key Features

- Twin needle stitching detail
- Scooped rib crew neck
- Women's fit with dropped shoulder

Specification

- 80% Ringspun Cotton / 20% Polyester
- 52% Ringspun Cotton / 48% Polyester (Charcoal)
- 75% Ringspun Cotton / 25% Polyester (Heather Grey)

Fabric Weight

- 280gsm



Heather Grey

JH035 XXS-XL WOMEN'S CROPPED SWEAT

Key Features

- Women's relaxed fit
- Crew neckline
- Cropped cut with drop shoulder design
- Twin needle stitching
- Raw edge hem with cover stitching

Specification

- 80% Ringspun Cotton / 20% Polyester
- 75% Ringspun Cotton / 25% Polyester (Heather Grey)

Fabric Weight

- 280gsm



JH038 XS-XXL COLOUR BLOCK SWEAT

Key Features

- Crew neck sweat
- Colour block design
- Modern contrast panelling

Specification

- 80% Ringspun Cotton / 20% Polyester
- 75% Ringspun Cotton / 25% Polyester (Heather Grey)

Fabric Weight

- 280gsm



Heather Grey /
New French Navy

JH037 XXS-XL
WOMEN'S CROPPED
¼ ZIP SWEAT
NEW STYLE

Key Features

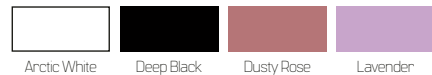
- Funnel neck
- Quarter zip fastening
- Cropped style
- Elasticated hem

Specification

- 80% Ringspun Cotton /
20% Polyester

Fabric Weight

- 280gsm



**NEW
STYLE**





Sapphire Blue

JH046 S-XXL

SOPHOMORE

¼ ZIP SWEAT

Key Features

- ¼ zip neck
- Metal YKK zipper and puller

Specification

- 80% Ringspun Cotton / 20% Polyester
- 52% Ringspun Cotton / 48% Polyester (Charcoal)
- 75% Ringspun Cotton / 25% Polyester (Heather Grey)

Fabric Weight

- 280gsm



Sapphire Blue

JH047 S-XXL

FRESHER FULL

ZIP SWEAT

Key Features

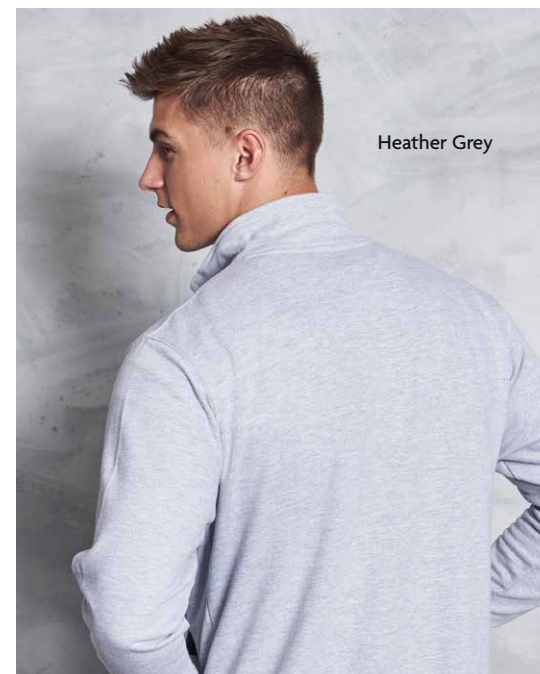
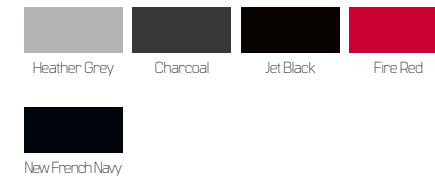
- Full covered zip
- Front pockets
- Metal YKK zipper and puller

Specification

- 80% Ringspun Cotton / 20% Polyester
- 52% Ringspun Cotton / 48% Polyester (Charcoal)
- 75% Ringspun Cotton / 25% Polyester (Heather Grey)

Fabric Weight

- 280gsm



Heather Grey



Heather Grey



VINTAGE FRESH

Washed Fire Red

JH130 XS-3XL GRADUATE HEAVYWEIGHT SWEAT

Key Features

- Heavyweight sweat
- Twin needle stitching detail
- Raglan sleeves

Specification

- 70% Ringspun Cotton / 30% Polyester
- 45% Ringspun Cotton / 55% Polyester (Charcoal)
- 65% Ringspun Cotton / 35% Polyester (Heather Grey)

Fabric Weight

- 330gsm



Burgundy

JH093 XS-3XL WASHED SWEAT

Key Features

- Washed effect
- Soft touch
- Set in sleeves
- Twin needle stitching detail
- Stylish fit

52 **JustHoods**

Specification

- 55% Ringspun Cotton / 45% Polyester

Fabric Weight

- 280gsm



Burgundy



Arctic White

JustHoods 53

JH049 Varsity Puffer Jacket/
Jet Black/White Page 59



JH049 Varsity Puffer
Jacket/New French
Navy/White Page 59



ALL-ROUND JACKETS

JH043 Varsity Jacket/
Oxford Navy/White Page 56



JH041 College Jacket/
Oxford Navy Page 58



JACKETS

- JH043 Varsity Jacket
- JH041 College Jacket
- JH049 Varsity Puffer Jacket

- page 56
- page 58
- page 59



JH043 Varsity Jacket/
Jet Black/Orange Crush
Page 56

JH043 XS-3XL VARSITY JACKET

Key Features

- Welt contrast pockets
- Taped back neck
- Hanging loop at back neck

Specification

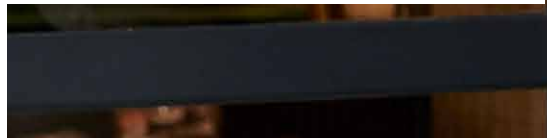
- 70% Ringspun Cotton / 30% Polyester
- 52% Ringspun Cotton / 48% Polyester (Charcoal)
- 65% Ringspun Cotton / 35% Polyester (Heather Grey)

Fabric Weight

- 330gsm
- Kids sizes **pg.92**

*All colours available in XS-XXL – available in 3XL on selected colours

Heather Grey White	Charcoal Heather Grey	Jet Black White	Jet Black Charcoal
Jet Black Heather Grey	Jet Black Hot Pink	Jet Black Fire Red	Jet Black Orange Crush
Jet Black Sun Yellow	Hot Pink White	Purple White	Burgundy Heather Grey
Fire Red White	Kelly Green White	Sapphire Blue Heather Grey	Royal Blue White
Oxford Navy White	Oxford Navy Heather Grey	Oxford Navy Burgundy	



ALL-AMERICAN STYLE



STAY ON TREND

Oxford Navy

JH049 XS-XXL VARSITY PUFFER JACKET

Key Features

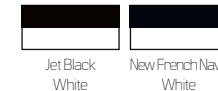
- Contrast set in sleeves
- Fully lined
- Zipped side pockets

Specification

- Shell: 100% Polyester Pongee, A/C Coated 240T
- Lining: 100% Polyester Taffeta 190T

Fabric Weight

- 80gsm



Jet Black / White



Oxford Navy

JH041 XS-XXL COLLEGE JACKET

Key Features

- Knitted collar, cuffs and waistband with stripe details
- Welt pockets
- Hanging loop at back neck

Specification

- 80% Ringspun Cotton / 20% Polyester
- 75% Ringspun Cotton / 25% Polyester (Heather Grey)

Fabric Weight

- 280gsm



New French Navy / White

JH077 Women's Tapered Track Pant / Jet Black **Page 81**



JH065 Women's Fashion Cropped Zoodie/
Dusty Green
Page 72



JH050 Zoodie/
Burgundy Page 62



JH250 Organic Zoodie/
Heather Grey Page 64

ZOODIES

JH050	Zoodie	page 62
JH250	Organic Zoodie <small>ORGANIC</small>	page 64
JH051	Urban Varsity Zoodie	page 65
JH052	Chunky Zoodie	page 66
JH053	Varsity Jacket	page 67
JH055	Women's Zoodie	page 68
JH057	Sleeveless Zoodie	page 69
JH058	Heather Zoodie	page 69
JH059	Retro Zoodie	page 70
JH063	Baseball Zoodie	page 71
JH065	Women's Fashion Cropped Zoodie	page 72
JH066	Sports Polyester Zoodie	page 74
JH150	Graduate Heavyweight Zoodie	page 75



JH050 Zoodie/
Royal Blue Page 62



JH066 Sports Polyester Zoodie/Oxford Navy/
Arctic White Page 74

STYLISH ZOODIE

JH050 S-5XL*

ZOODIE

Key Features

- Self-fabric covered main zip
- Twin needle stitching detail
- Double fabric hood

Specification

- 80% Ringspun Cotton/ 20% Polyester
- 52% Ringspun Cotton / 48% Polyester (Charcoal)
- 75% Ringspun Cotton / 25% Polyester (Heather Grey)

Fabric Weight

- 280gsm
- Kids sizes **pg.93**

*All colours available in S-XXL – available in 5XL on selected colours



WEEKEND VIBES



Sapphire Blue

JH052 S-XXL CHUNKY ZOODIE

Key Features

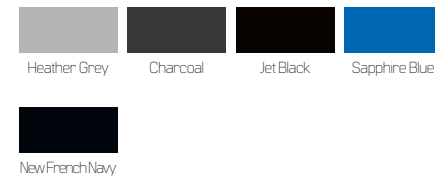
- Side panels for stylish fit
- Brass zip covered with chunky rib detail
- Overlock stitching detail throughout
- Double fabric hood with heather grey waffle fabric inner

Specification

- 80% Ringspun Cotton / 20% Polyester
- 52% Ringspun Cotton / 48% Polyester (Charcoal)
- 75% Ringspun Cotton / 25% Polyester (Heather Grey)

Fabric Weight

- 400gsm



Heather Grey

JH053 S-XXL VARSITY ZOODIE

Key Features

- Twin needle stitching detail
- Double fabric hood with contrast inner

Specification

- 80% Ringspun Cotton / 20% Polyester
- 52% Ringspun Cotton / 48% Polyester (Charcoal)
- 75% Ringspun Cotton / 25% Polyester (Heather Grey)

Fabric Weight

- 280gsm



Burgundy /
Charcoal



Royal Blue /
Arctic White



Burgundy /
Charcoal



Fire Red



Oxford Navy

JH057 S-XXL SLEEVELESS ZOODIE

Key Features

- Sleeveless zipped hoodie with metal YKK zip
- Twin needle stitching detail
- Double fabric hood

Specification

- 80% Ringspun Cotton / 20% Polyester
- 52% Ringspun Cotton / 48% Polyester (Charcoal)
- 75% Ringspun Cotton / 25% Polyester (Heather Grey)

Fabric Weight

- 280gsm



Fire Red

JH055 XS-XL WOMEN'S ZOODIE

Key Features

- Women's fit
- Covered main plastic zip
- Twin needle stitching detail
- Double fabric hood

Specification

- 80% Ringspun Cotton / 20% Polyester
- 75% Ringspun Cotton / 25% Polyester (Heather Grey)

Fabric Weight

- 280gsm



JH058 XS-XXL HEATHER ZOODIE

Key Features

- Soft feel lightweight fabric
- Slim fit
- Twin needle stitching detail

Specification

- 52% Ringspun Cotton / 48% Polyester

Fabric Weight

- 225gsm



Red Heather

JH059 XS-XXL

RETRO ZOODIE

Key Features

- Full zip hoodie with metal YKK zip
- Slim fit
- Twin needle stitching detail
- Double fabric hood

Specification

- 80% Ringspun Cotton / 20% Polyester
- 52% Ringspun Cotton / 48% Polyester (Charcoal)

Fabric Weight

- 280gsm



Charcoal Grey / Jet Black Charcoal Grey / Burgundy Charcoal Grey / Oxford Navy



Charcoal Grey / Burgundy

JH072 College Cuffed Jogpant / Burgundy **Page 78**



Charcoal Grey / Burgundy

JH063 S-XXL

BASEBALL ZOODIE

Key Features

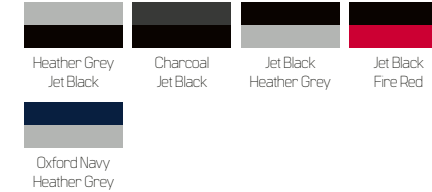
- Twin needle stitching detail
- Double fabric hood
- YKK Plastic zip

Specification

- 80% Ringspun Cotton / 20% Polyester
- 52% Ringspun Cotton / 48% Polyester (Charcoal)
- 75% Ringspun Cotton / 25% Polyester (Heather Grey)

Fabric Weight

- 280gsm



Heather Grey / Jet Black Charcoal / Jet Black Jet Black / Heather Grey Jet Black / Fire Red
Oxford Navy / Heather Grey



Jet Black / Fire Red



Oxford Navy / Heather Grey



Oxford Navy / Heather Grey

JH065 XXS-XL
WOMEN'S FASHION
CROPPED ZOODIE

Key Features

- Women's relaxed fit
- Cropped cut with drop shoulder design
- Full front Metal YKK Zip
- Twin needle stitching detail

Specification

- 80% Ringspun Cotton / 20% Polyester
- 75% Ringspun Cotton / 25% Polyester (Heather Grey)

Fabric Weight

- 280gsm



Dusty Pink

Dusty Green



GET READY GET SET

Fire Red /
Jet Black

JH150 XS-3XL GRADUATE HEAVYWEIGHT ZOODIE

Key Features

- 3 panel fabric hood with single jersey fabric inner
- Heavyweight zoodie
- Plastic YKK zipper and puller with chin protector

Specification

- 70% Ringspun Cotton / 30% Polyester
- 45% Ringspun Cotton / 55% Polyester (Charcoal)
- 65% Ringspun Cotton / 35% Polyester (Heather Grey)

Fabric Weight

- 330gsm



Heather Grey



Oxford Navy /
Arctic White

JH066 S-3XL SPORTS POLYESTER ZOODIE

Key Features

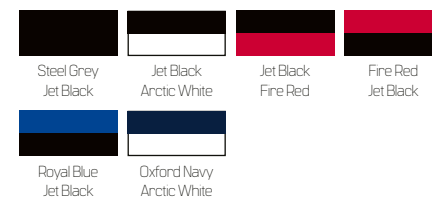
- Sporty fit
- Full zip hoodie with contrast plastic zip
- Twin needle stitching detail
- Raglan sleeves with contrast panel
- Three panel hood with contrast inner

Specification

- 100% Polyester

Fabric Weight

- 200gsm



New French
Navy



New French
Navy



JH072 College Cuffed Jogpant/ Arctic White Page 78



JH080 Campus Shorts/ Burgundy Page 80



JH049 Varsity Puffer Jacket/ Jet Black/ White Page 59
JH077 Women's Tapered Track Pant/ Jet Black Page 81

COSY STYLE PANTS



JH074 Tapered Track Pant/ Green Camo Page 80



JH030 ADWis Sweat/ Burgundy Page 41
JH072 College Cuffed Jogpant/ Burgundy Page 78

PANTS & SHORTS

- JH072 College Cuffed Jogpant **NEW COLOURS** page 78
- JH074 Tapered Track Pant page 80
- JH080 Campus Shorts page 80
- JH077 Women's Tapered Track Pant page 81

JH072 S-XXL
COLLEGE
CUFFED JOGPANT
NEW COLOURS

Key Features

- Elasticated waist with white inner drawcords
- Side pockets

Specification

- 80% Ringspun Cotton / 20% Polyester
- 52% Ringspun Cotton / 48% Polyester (Charcoal)
- 75% Ringspun Cotton / 25% Polyester

Fabric Weight

- 280gsm
- Kids sizes **pg.94**



CASUAL AND STYLISH





Green Camo

JH074 S-XXL TAPERED TRACK PANT

Key Features

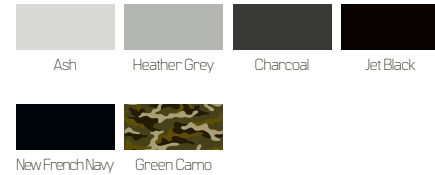
- Modern tapered slim fit
- Front pockets
- Elasticated waistband with outer drawcords

Specification

- 80% Ringspun Cotton / 20% Polyester
- 52% Ringspun Cotton / 48% Polyester (Charcoal)
- 75% Ringspun Cotton / 25% Polyester (Heather Grey)
- 70% Ringspun Cotton / 30% Polyester (Green Camo)

Fabric Weight

- 280gsm
- Kids sizes **pg.95**



JH077 XS-XL WOMEN'S TAPERED TRACK PANT

Key Features

- Modern tapered slim fit
- Front pockets with YKK zips
- Elasticated waistband with outer drawcords

Specification

- 96% Ringspun Cotton / 4% Elastane
- 85% Ringspun Cotton / 11% Polyester / 4% Elastane (Heather Grey)

Fabric Weight

- 280gsm



JH053 Varsity Jacket/
Burgundy Page 67

Jet Black

JH080 S-XXL CAMPUS SHORTS

Key Features

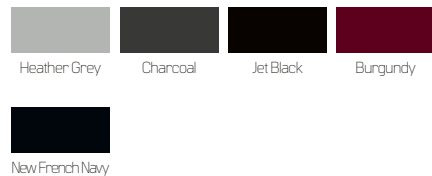
- Heavyweight shorts
- Side pockets
- Single back patch pocket

Specification

- 70% Ringspun Cotton / 30% Polyester
- 52% Ringspun Cotton / 48% Polyester (Charcoal)
- 65% Ringspun Cotton / 35% Polyester (Heather Grey)

Fabric Weight

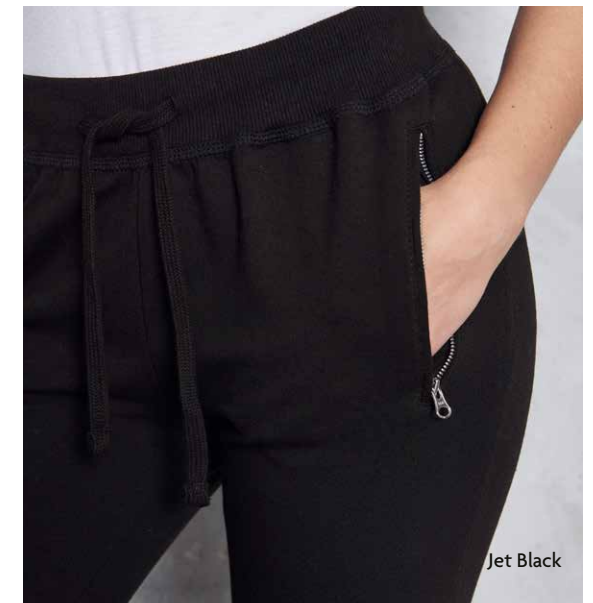
- 330gsm



Burgundy



Jet Black



Jet Black



JH001J Kids Hoodie/
Arctic White Page 84



JH001J Kids Hoodie/
Fire Red Page 84

COOL AND COMFY



JH030J Kids ADWis Sweat/
Desert Sand Page 89

JH030J Kids ADWis Sweat/
Dusty Pink Page 89



JH050J Kids Zoodie/
Burgundy Page 93

JH050J Kids Zoodie/
Oxford Navy Page 93

KIDS

- JH001J Kids Hoodie page 84
- JH201J Kids Organic Hoodie **ORGANIC** page 86
- JH003J Kids Varsity Hoodie page 87
- JH004J Kids Electric Hoodie page 88
- JH006J Kids Sports Polyester Hoodie page 88
- JH030J Kids AWDIs Sweat **NEW COLOURS** page 89
- JH009J Kids Baseball Hoodie page 90
- JH014J Kids Camo Hoodie page 91
- JH043J Kids Varsity Jacket page 92
- JH050J Kids Zoodie page 93
- JH072J Kids Cuffed Jogpants page 94
- JH074J Kids Tapered Track Pant page 95

JH001J XXS-XL KIDS HOODIE

Key Features

- Double fabric hood
- Twin needle stitching detail
- No drawcords – to comply to EU regulation

Specification

- 80% Ringspun Cotton / 20% Polyester
- 52% Ringspun Cotton / 48% Polyester (Charcoal)
- 75% Ringspun Cotton / 25% Polyester (Heather Grey)

Fabric Weight

- 280gsm
- Mens sizes **pg.11**
- Women's sizes **pg.12**



EVERYDAY VIBES





ORGANIC & RECYCLED
• SUSTAINABLE •
 Organic Recycled

JH003J XS-XL KIDS VARSITY HOODIE

Key Features

- Twin needle stitching detail
- Double fabric hood with contrast inner
- No drawcords – to comply with EU regulation

Specification

- 80% Ringspun Cotton / 20% Polyester
- 52% Ringspun Cotton / 48% Polyester (Charcoal)
- 75% Ringspun Cotton / 25% Polyester (Heather Grey)

Fabric Weight

- 280gsm
- Adults sizes **pg.17**



JH201J XXS-XL KIDS ORGANIC HOODIE

Key Features

- Twin needle stitching detail
- Double fabric hood
- No drawcords – to comply with EU regulation
- Kangaroo pouch pocket

Specification

- 80% Organic Cotton / 20% Recycled Polyester
- 75% Organic Cotton / 25% Recycled Polyester (Heather Grey)

Fabric Weight

- 280gsm
- Adult sizes **pg.14**





JH004J XS-XL KIDS ELECTRIC HOODIE

Key Features

- Vibrant eye-catching colours
- Twin needle stitching detail
- No drawcords – to comply with EU regulation

Specification

- 85% Polyester / 15% Ringspun Cotton

Fabric Weight

- 280gsm
- Adult sizes **pg.18**



JH006J XS-XL KIDS SPORTS POLYESTER HOODIE

Key Features

- Sporty fit
- Twin needle stitching detail
- Three panel double fabric hood
- Straight hem
- No drawcords – to comply with EU regulation

Specification

- 100% Polyester

Fabric Weight

- 200gsm
- Adult sizes **pg.20**



JH030J XXS-XL* KIDS AWDIs SWEAT NEW COLOURS NEW SIZES

Key Features

- 27 great colours
- Set in sleeves
- Stylish fit
- Brushed inner fleece

Specification

- 80% Ringspun Cotton / 20% Polyester
- 52% Ringspun Cotton / 48% Polyester (Charcoal)
- 75% Ringspun Cotton / 25% Polyester (Heather Grey)

Fabric Weight

- 280gsm
- Mens sizes **pg.41**
- Women's sizes **pg.42**

*All sizes start at XXS except Forest Green





Oxford Navy /
Heather Grey

JH009J XS-XL KIDS BASEBALL HOODIE

Key Features

- Twin needle stitching detail
- Contrast raglan sleeves
- Double fabric hood
- No drawcords – to comply with EU regulation

Specification

- 80% Ringspun Cotton / 20% Polyester
- 52% Ringspun Cotton / 48% Polyester (Charcoal)
- 75% Ringspun Cotton / 25% Polyester (Heather Grey)

Fabric Weight

- 280gsm
- Adult sizes **pg.21**



Jet Black /
Fire Red

JH072J Kids Cuffed Jogpants/
New French Navy Page 94

JH014J XS-XXL KIDS CAMO HOODIE

Key Features

- Twin needle stitching detail
- Classic all over camouflage print design
- Double fabric hood
- No drawcords – to comply with EU regulation

Specification

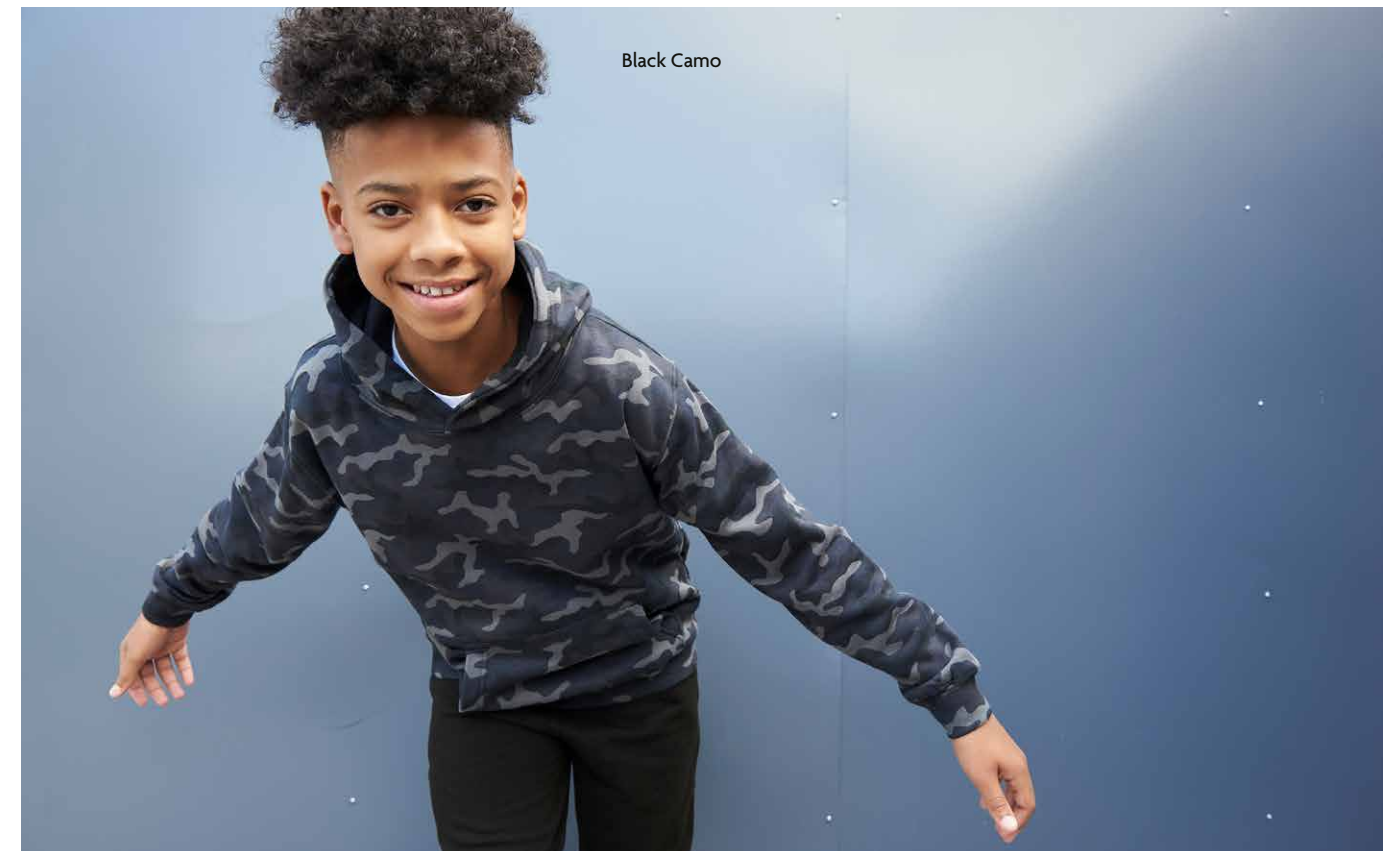
- 70% Ringspun Cotton / 30% Polyester

Fabric Weight

- 280gsm
- Adult sizes **pg.24**



Green
Camo



Black Camo



VARSITY READY

Oxford Navy / Heather Grey

JH050J XS-XL KIDS ZOODIE

Key Features

- Self-fabric covered main zip
- Twin needle stitching detail
- Double fabric hood
- No drawcords – to comply with EU regulation

Specification

- 80% Ringspun Cotton / 20% Polyester
- 75% Ringspun Cotton / 25% Polyester (Heather Grey)

Fabric Weight

- 280gsm
- Adult sizes **pg.62**



Burgundy

Oxford Navy



Hot Pink / White

JH043J XS-XL KIDS VARSITY JACKET

Key Features

- Welt contrast pockets
- Taped back neck
- Hanging loop at back neck

Specification

- 70% Ringspun Cotton / 30% Polyester
- 65% Ringspun Cotton / 35% Polyester (Heather Grey)

Fabric Weight

- 330gsm
- Adult sizes **pg.56**



Hawaiian Blue



Hawaiian Blue



Heather
Grey

JH072J XS-XL KIDS CUFFED JOGPANTS

Key Features

- Side pockets
- Cuffed leg opening
- 1x1 rib waistband
- No drawcords – to comply with EU regulation

Specification

- 80% Ringspun Cotton / 20% Polyester
- 75% Ringspun Cotton / 25% Polyester (Heather Grey)

Fabric Weight

- 280gsm
- Adult sizes **pg.78**



New
French
Navy

JH074J XS-XL KIDS TAPERED TRACK PANT

Key Features

- Side pockets
- Tapered leg with cuffs
- 1x1 rib waistband
- No drawcords – to comply with EU regulation

Specification

- 80% Ringspun Cotton / 20% Polyester
- 75% Ringspun Cotton / 25% Polyester (Heather Grey)

Fabric Weight

- 280gsm
- Adult sizes **pg.80**



Heather
Grey



Heather
Grey

JH203 Organic Sweat /
New French Navy Page 44



MAKE YOUR
MARK



JH030 AWDIs Sweat /
Lavender Page 41

PRINT GUIDE

JH001 College Hoodie /
Dusty Rose Page 11



JH011 Epic Print Hoodie /
Charcoal Page 22



DOWNLOAD OUR PRINT GUIDE

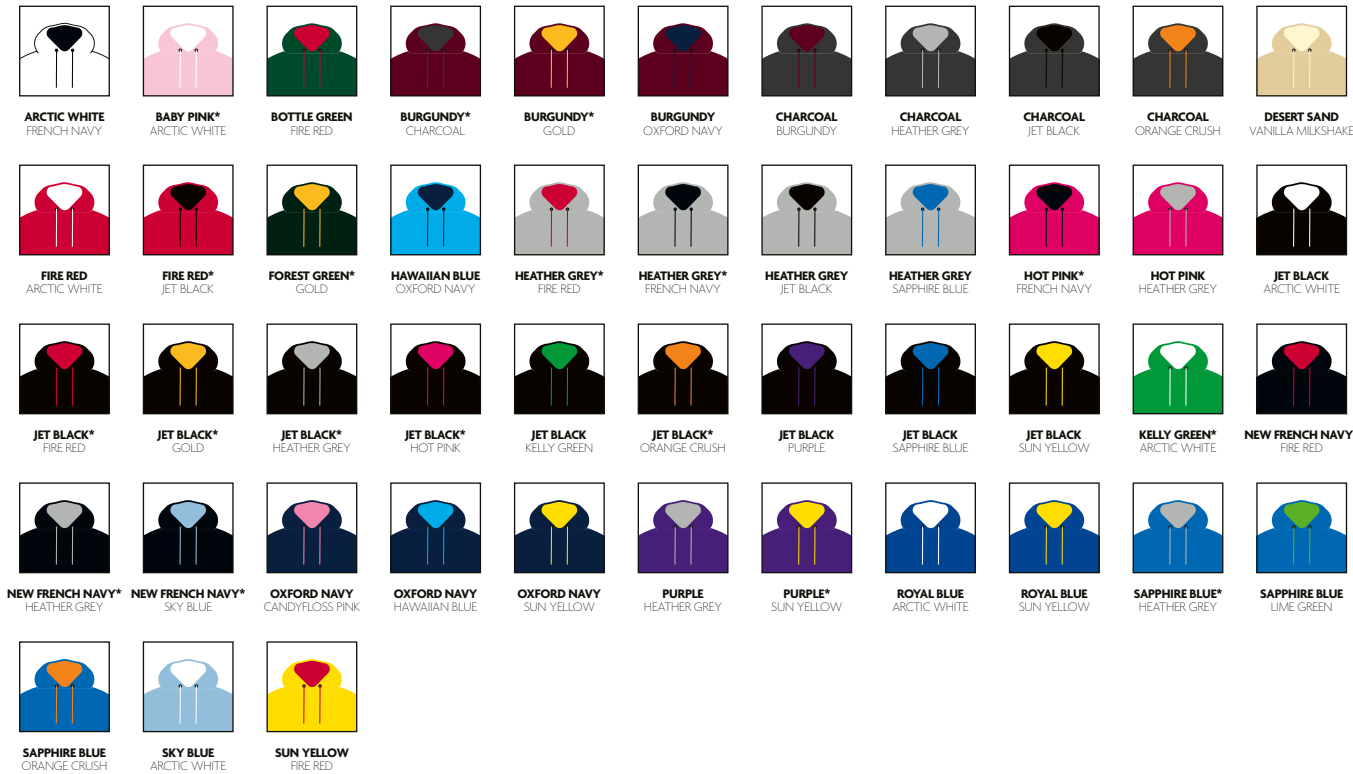


GARMENT PRINTING:

- SCREENPRINTING
- DTG
- TRANSFER
- SUBLIMATION
- EMBROIDERY

CONTRAST COLOUR GUIDE

JH003 VARSITY HOODIE / JH003J KIDS VARSITY HOODIE*



JH009 BASEBALL HOODIE / JH009J KIDS BASEBALL HOODIE*



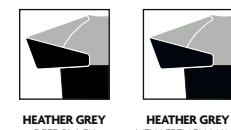
JH018 NAUTICAL STRIPE HOODIE



JH033 BASEBALL SWEAT



JH038 COLOUR BLOCK SWEAT



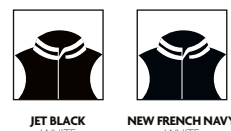
JH041 COLLEGE JACKET



JH043 VARSITY JACKET / JH043J KIDS VARSITY JACKET*



JH049 VARSITY PUFFER JACKET



JH051 URBAN VARSITY ZOODIE



JH053 VARSITY ZOODIE



JH059 RETRO ZOODIE



JH063 BASEBALL ZOODIE



JH066 SPORTS POLYESTER ZOODIE



JH103 GAME DAY HOODIE



OUR FABRICS

COLLEGE FABRIC



GRADUATE FABRIC



STREET FABRIC



SPORTS FABRIC



SURF FABRIC



HEATHER FABRIC



ORGANIC FABRIC



FRENCH TERRY FABRIC



WASHED FABRIC



ELECTRIC FABRIC



SUPASOFT FABRIC



CHUNKY FABRIC



PMS COLOUR GUIDE

NEW FRENCH NAVY PMS 5395C	OXFORD NAVY PMS 533C	NAVY SMOKE PMS 533C	DENIM BLUE PMS 534C	INK BLUE PMS 19-4033 TCX	ROYAL BLUE PMS 661C	SAPPHIRE BLUE PMS 300C	TROPICAL BLUE PMS 285C
AIRFORCE BLUE PMS 5405C	DUSTY BLUE PMS 17-4021 TCX	CORNFLOWER BLUE PMS 659C	SKY BLUE PMS 644C	HAWAIIAN BLUE PMS 2995C	TURQUOISE SURF PMS 311C	DEEP SEA BLUE PMS 3035C	JADE PMS 329C
PEPPERMINT PMS 3242C	FOREST GREEN PMS 627C	BOTTLE GREEN PMS 554C	COMBAT GREEN PMS 19-0509 TCX	OLIVE GREEN PMS 448C	MOSS GREEN PMS 561C	DUSTY GREEN PMS 16-5804 TCX	EARTHY GREEN NEW PMS 18-0420 TCX
KELLY GREEN PMS 347C	SPRING GREEN PMS 339C	ALIEN GREEN PMS 15-0545TCX	LIME GREEN PMS 15-0146TCX	APPLE GREEN PMS 358C	HOT CHOCOLATE PMS 440C	CARAMEL TOFFEE PMS 18-1031 TCX	CARAMEL LATTE NEW PMS 16-1323 TCX
MOCHA BROWN PMS 7531CP	DESERT SAND PMS 7502C	NUDE PMS 4665C	PEACH PERFECT PMS 489C	VANILLA MILKSHAKE PMS 7499C	SHERBET LEMON PMS 120C	SUN YELLOW PMS 109C	MUSTARD PMS 1245C
GOLD PMS 136C	ORANGE CRUSH PMS 1505C	PUMPKIN PIE NEW PMS 16-1149 TCX	GINGER BISCUIT NEW PMS 18-1250 TCX	BURNT ORANGE PMS 173C	SUNSET ORANGE PMS 179C	RED HOT CHILLI PMS 1945C	BRICK RED PMS 202C
RED RUST PMS 19-1334 TCX	FIRE RED PMS 200C	BURGUNDY PMS 7421C	BURGUNDY SMOKE PMS 7428C	PLUM PMS 511C	WILD MULBERRY PMS 7666C	PURPLE PMS 2617C	ULTRA VIOLET PMS 2685C
MAGENTA MAGIC PMS 258C	PINKY PURPLE PMS 674C	LAVENDER PMS 2563C	TRUE VIOLET PMS 271C	CRANBERRY PMS 215C	HOT PINK PMS 214C	LIPSTICK PINK PMS 191C	DUSTY PURPLE PMS 17-1610 TCX
DUSTY ROSE NEW PMS 17-1718 TCX	DUSTY PINK PMS 500CP	CANDYFLOSS PINK PMS 204C	BABY PINK PMS 1895C	JET BLACK PMS BLACK	DEEP BLACK PMS BLACK	BLACK SMOKE PMS 19-3902TCX	STORM GREY PMS BLACK 7C
SHARK GREY PMS 19-0201 TCX	CHARCOAL PMS 18-5210TCX	STEEL GREY PMS 425C	MOONDUST GREY PMS 428CP	HEATHER GREY PMS COOL GRAY 5C	ASH PMS COOL GRAY 2 UP	ARCTIC WHITE PMS WHITE	

ALL COLOURS HAVE THE NEAREST PANTONE REFERENCE LISTED – ACTUAL SHADES MAY VARY AS COLOUR REPRESENTATION IS ONLY AS ACCURATE AS THE PRINTING PROCESS WILL ALLOW.

TO FIT GUIDE

MEN'S / UNISEX CLOTHING

	XS	S	M	L	XL	XXL	3XL	4XL	5XL
TO FIT CHEST CM	68	91	101	111	121	132	142	152	157
TO FIT CHEST INCHES	34	36	40	44	48	52	56	60	62
TO FIT WAIST CM	28 – 30	30 – 32	32 – 34	34 – 36	36 – 38	38 – 40	40 – 42	42 – 44	44 – 46
TO FIT WAIST INCHES	71 – 76	76 – 81	81 – 86	86 – 91	91 – 96	96 – 101	101 – 106	106 – 111	111 – 116

INTERNATIONAL SIZES	XS	S	M	L	XL	XXL	3XL	4XL	5XL
FRENCH	40	42	44	46	48	50	52	54	56
ITALIAN	44	46	48	50	52	54	56	58	60
GERMAN	32	33	34	36	38	40	42	44	46
NETHERLANDS	32	33	34	36	38	40	42	44	46
SPAIN	40	42	44	46	48	50	52	54	56
USA	34	36	38	40	42	44	46	48	50

LADIES' CLOTHING

	6	8	10	12	14	16	18
	XXS	XS	S	M	L	XL	XXL
TO FIT WAIST CM	22 – 24	24 – 26	26 – 28	28 – 30	30 – 32	32 – 34	34 – 36
TO FIT WAIST INCHES	56 – 61	61 – 66	66 – 71	71 – 76	76 – 81	81 – 86	86 – 91

INTERNATIONAL SIZES	6	8	10	12	14	16	18
FRENCH	34	36	38	40	42	44	46
ITALIAN	38	40	42	44	46	48	50
GERMAN	32	34	36	38	40	42	44
NETHERLANDS	32	34	36	38	40	42	44
SPAIN	34	36	38	40	42	44	46
USA	2	4	6	8	10	12	14

CHILDREN'S CLOTHING

	XXS	XS	S	M	L	XL
CHEST	24"	26"	28"	30"	32"	34"
AGE	1 – 2	3 – 4	5 – 6	7 – 8	9 – 11	12 – 13
HEIGHT (CM)	90	102	114	126	138	150

INTERNATIONAL SIZES	XXS	XS	S	M	L	XL
CHEST	24"	26"	28"	30"	32"	34"
AGE	1 – 2	3 – 4	5 – 6	7 – 8	9 – 11	12 / 13
HEIGHT (CM)	80 – 92	98 – 104	110 – 116	122 – 128	134 – 146	152 – 158





Just Hoods[®]

AWDis

www.blancpromotietextiel.com