



**blanc**  
PROMOTIE TEXTIEL

WORKBOOK  
EN

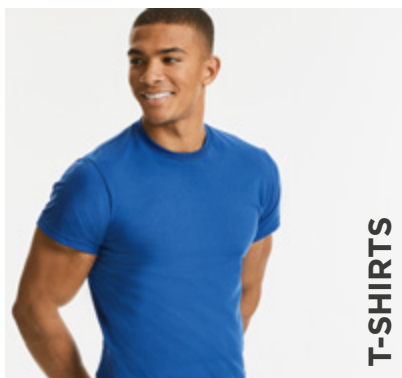
EST. 1902





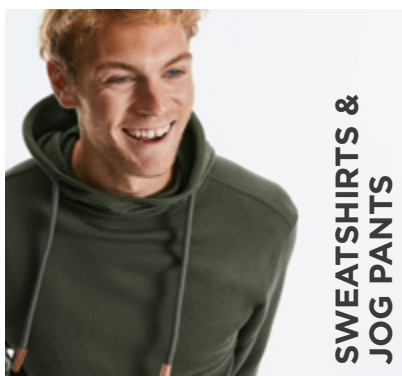
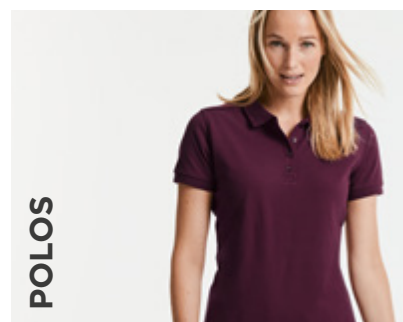
**WE  THE ORIGINAL.**  
EST. 1902

# CONTENTS



PURE ORGANIC T & LONG SLEEVE T	6
PURE ORGANIC V-NECK T	7
PURE ORGANIC HEAVY T	7
SLIM T	8
CLASSIC T	9
CLASSIC HEAVYWEIGHT T	9
HD T	10

PURE ORGANIC POLO	12
CLASSIC COTTON POLO	12
ULTIMATE COTTON POLO	13
CLASSIC POLYCOTTON POLO	14
HARDWEARING POLYCOTTON POLO	14
STRETCH POLO	15



PURE ORGANIC SWEATS	16
AUTHENTIC SWEATS	16
AUTHENTIC MELANGE SWEATS	19
CLASSIC SWEATSHIRT	20
V-NECK SWEATSHIRT & CARDIGAN	20
HOODED SWEATSHIRT	21
SWEAT PANTS	21

POLYCOTTON POPLIN SHIRT	22
PURE COTTON POPLIN SHIRT	24
STRETCH SHIRT	25
ULTIMATE STRETCH SHIRT	26
WASHED OXFORD SHIRT	27
OXFORD SHIRT	28
ULTIMATE NON-IRON SHIRT	30

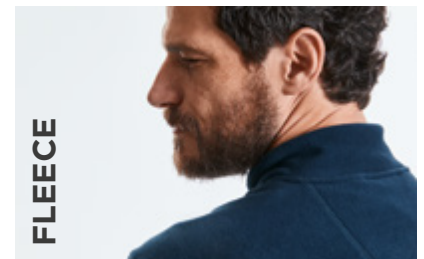


COOLMAX® SHIRT	32
CLASSIC TWILL SHIRT	33
ROLL SLEEVE TWILL SHIRT	34
HERRINGBONE SHIRT	35



CREW-NECK KNITTED PULLOVER	36
V-NECK KNITTED PULLOVER	36
V-NECK KNITTED CARDIGAN	37
V-NECK SLEEVELESS KNITTED PULLOVER & CARDIGAN	37

MICROFLEECE	38
OUTDOOR FLEECE	39



CROSS JACKET	40
HOODED NANO JACKET & BODYWARMER	40
BIONIC SOFTSHELL JACKET	42
SOFTSHELL JACKET & GILET	43
SMART SOFTSHELL JACKET & GILET	44
SPORTSHELL 5000 JACKET	45
HYDRAPLUS 2000 JACKET	45

HEAVY DUTY WORKWEAR T	46
HEAVY DUTY COLLAR & CREW NECK WORKWEAR SWEATSHIRTS	46
WORKWEAR POLYCOTTON TWILL TROUSERS & SHORTS	47
HEAVY DUTY WORKWEAR TROUSERS	47
HEAVY DUTY WORKWEAR GILET	48
HEAVY DUTY WORKWEAR SOFTSHELL JACKET	49



# PURE ORGANIC T & LONG SLEEVE T

108 • 100



## MATERIAL / WEIGHT

100% Combed Ringspun Cotton (organic)  
Light Oxford: 97% Combed Ringspun Cotton (organic), 3% Viscose  
160g/m<sup>2</sup>

## PACKING

Pack 12/ Carton 72  
108B, 100M: Pack 6/ Carton 36

### 108M MEN'S PURE ORGANIC T SIZES XS-3XL

- » Contemporary shaped fit
- » Single Jersey
- » Custom-developed shoulder to shoulder tape offering greater stability and an elegant look
- » Label free: Small size label in the neck (incl. product number)
- » Narrow collar band with LYCRA®
- » Comfortable cool and light texture
- » Smooth surface for best print results



### 108F LADIES' PURE ORGANIC T SIZES XS-2XL

- » Contemporary shaped fit
- » Single Jersey
- » Custom-developed shoulder to shoulder tape offering greater stability and an elegant look
- » Label free: Small size label in the neck (incl. product number)
- » Narrow collar band with LYCRA®
- » Comfortable cool and light texture
- » Smooth surface for best print results



### 108B CHILDREN'S PURE ORGANIC T SIZES 3-14 YEARS

- » Contemporary shaped fit
- » Single Jersey
- » Custom-developed shoulder to shoulder tape offering greater stability and an elegant look
- » Label free: Small size label in the neck (incl. product number)
- » Narrow collar band with LYCRA®
- » Comfortable cool and light texture
- » Smooth surface for best print results



### 100M PURE ORGANIC LONG SLEEVE T SIZES XS-3XL

- » Contemporary shaped fit
- » Single Jersey
- » Custom-developed shoulder to shoulder tape offering greater stability and an elegant look
- » Label free: Small size label in the neck (incl. product number)
- » Narrow collar band with LYCRA®
- » Comfortable cool and light texture
- » Smooth surface for best print results



## PURE ORGANIC V-NECK T

103



### MATERIAL / WEIGHT

100% Combed Ringspun Cotton (organic)  
160g/m<sup>2</sup>

### PACKING

Pack 6/ Carton 36

### 103M MEN'S PURE ORGANIC V-NECK T SIZES XS-3XL

- » Contemporary shaped fit
- » Single Jersey
- » Custom-developed shoulder to shoulder tape offering greater stability and an elegant look
- » Label free: Small size label in the neck (incl. product number)
- » Classic narrow V-neck with cotton/ LYCRA® rib
- » Comfortable cool and light texture
- » Smooth surface for best print results



### 103F LADIES' PURE ORGANIC V-NECK T SIZES XS-2XL

- » Contemporary shaped fit
- » Single Jersey
- » Custom-developed shoulder to shoulder tape offering greater stability and an elegant look
- » Label free: Small size label in the neck (incl. product number)
- » Classic narrow V-neck with cotton/ LYCRA® rib
- » Comfortable cool and light texture
- » Smooth surface for best print results



## PURE ORGANIC HEAVY T

118



### MATERIAL / WEIGHT

100% Combed Ringspun Cotton (organic)  
190g/m<sup>2</sup>

### PACKING

Pack 6/ Carton 36

### 118M MEN'S PURE ORGANIC HEAVY T SIZES XS-3XL

- » Contemporary shaped fit
- » Single Jersey
- » Custom-developed shoulder to shoulder tape offering greater stability and an elegant look
- » Label free: Small size label in the neck (incl. product number)
- » Narrow collar band with LYCRA® and single top stitch
- » Comfortable cool texture despite heavier weight
- » Smooth surface for best print results



### 118F LADIES' PURE ORGANIC HEAVY T SIZES XS-2XL

- » Contemporary shaped fit
- » Single Jersey
- » Custom-developed shoulder to shoulder tape offering greater stability and an elegant look
- » Label free: Small size label in the neck (incl. product number)
- » Narrow collar band with LYCRA® and single top stitch
- » Comfortable cool texture despite heavier weight
- » Smooth surface for best print results



# SLIM T

155



## MATERIAL / WEIGHT

100% Ringspun Cotton  
Light Oxford: 93% Cotton, 7% Viscose  
White: 140g/m<sup>2</sup>, Colours: 145g/m<sup>2</sup>

## PACKING

Pack 10/ Carton 100

### 155M MEN'S SLIM T SIZES S-2XL

- » Long slim fit
- » Single Jersey
- » Back neck tape
- » 1x1 rib knit collar with top stitch
- » Tubular construction



### 155F LADIES' SLIM T SIZES XS-XL

- » Long slim fit
- » Single Jersey
- » Back neck tape
- » 1x1 rib knit collar with top stitch
- » Side seamed for a feminine shape



### 155B CHILDREN'S SLIM T SIZES 1-14 YEARS

- » Long slim fit
- » Single Jersey
- » Back neck tape
- » 1x1 rib knit collar with top stitch
- » Tubular construction



155F

# 75%

## WIND ENERGY

We manufacture the majority of our T-shirts in our own production facilities, where 75% of the power is provided by our wind farm.





## CLASSIC T

180



### MATERIAL / WEIGHT

100% Ringspun Cotton  
Light Oxford: 93% Cotton, 7% Viscose  
White: 175g/m<sup>2</sup>, Colours: 180g/m<sup>2</sup>

### PACKING

Pack 12/Carton 72

### 180M CLASSIC T SIZES XS-4XL

- » Classic Fit
- » Single Jersey
- » Shoulder to shoulder neck tape
- » 1x1 rib knit collar with top stitch

- » Tubular construction (Light Oxford colour has side seamed construction)

XS not available in Convo Grey. 3XL & 4XL only available in Black, Bottle Green, Bright Royal, French Navy and White



### 180B CHILDREN'S CLASSIC T SIZES 1-12 YEARS

- » Classic Fit
- » Single Jersey
- » Shoulder to shoulder neck tape
- » 1x1 rib knit collar with top stitch
- » Name label



## CLASSIC HEAVYWEIGHT T

215



### MATERIAL / WEIGHT

100% Combed Ringspun Cotton  
White: 210g/m<sup>2</sup>, Colours: 215g/m<sup>2</sup>

### PACKING

Pack 12/Carton 72

### 215M CLASSIC HEAVYWEIGHT T SIZES S-2XL

- » Classic Fit
- » Single Jersey
- » Shoulder to shoulder neck tape
- » 1x1 rib knit collar with top stitch
- » Tubular construction



# HD T

## 165



### MATERIAL / WEIGHT

65% Polyester, 35% Combed Ringspun Cotton  
White: 155g/m<sup>2</sup>, Colours: 160g/m<sup>2</sup>

### PACKING

Pack 6/Carton 36

### 165M MEN'S HD T

#### SIZES XS-3XL

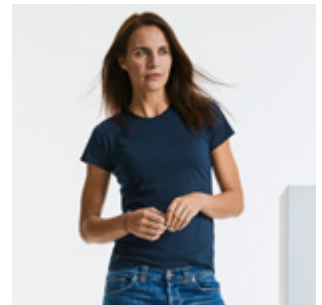
- » Crew neck with single needle stitching
- » PolyCotton mix
- » Shoulder to shoulder neck tape
- » Side seamed
- » Removable, adhesive neck label
- » Narrow neck rib



### 165F LADIES' HD T

#### SIZES XS-2XL

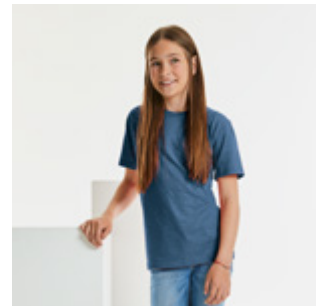
- » Crew neck with single needle stitching
- » PolyCotton mix
- » Shoulder to shoulder neck tape
- » Side seamed
- » Removable, adhesive neck label
- » Narrow neck rib



### 165B CHILDREN'S HD T

#### SIZES 5-14 YEARS

- » Crew neck with single needle stitching
- » PolyCotton mix
- » Shoulder to shoulder neck tape
- » Side seamed
- » Removable, adhesive neck label
- » Narrow neck rib



165B



**DISCOVER HOW WE WORK**  
FOR A BETTER TOMORROW  
[www.russelleurope.com/csr](http://www.russelleurope.com/csr)

[ **belong** ]  
TO A BETTER  
FUTURE

215M

## PURE ORGANIC POLO

508



### MATERIAL / WEIGHT

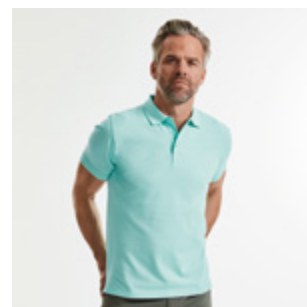
100% Combed Ringspun Cotton (organic)  
215g/m<sup>2</sup>

### PACKING

Pack 6/ Carton 36

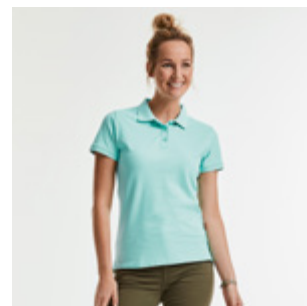
### 508M MEN'S PURE ORGANIC POLO SIZES S-3XL

- » Contemporary shaped fit
- » Piqué
- » Distinguished front placket with cross stitched element to provide best look and better placket stability
- » Smooth and even surface for best print results
- » Label free: Small size label in the neck (incl. product number)
- » Dyed-to-match buttons



### 508F LADIES' PURE ORGANIC POLO SIZES XS-2XL

- » Contemporary shaped fit
- » Piqué
- » Distinguished front placket with cross stitched element to provide best look and better placket stability
- » Smooth and even surface for best print results
- » Label free: Small size label in the neck (incl. product number)
- » Dyed-to-match buttons



## CLASSIC COTTON POLO

569



### MATERIAL / WEIGHT

100% Ringspun Cotton  
White: 195g/m<sup>2</sup>, Colours: 200g/m<sup>2</sup>

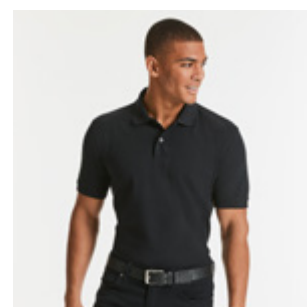
### PACKING

Pack 6/ Carton 36

### 569M MEN'S CLASSIC COTTON POLO SIZES XS-4XL

- » Classic fit with side vents
- » Side vents for ease of fit
- » Reinforced shoulder seams with neck tape
- » Classic style flat knit cuffs
- » Twin needle hem at bottom for added stability

XS only available in French Navy and White. 3XL & 4XL only available in Black, French Navy and White



### 569F LADIES' CLASSIC COTTON POLO SIZES XS-2XL

- » Classic fit with side vents
- » Side vents for ease of fit
- » Reinforced shoulder seams with neck tape
- » Open sleeve with twin needle hem
- » Twin needle hem at bottom for added stability



# ULTIMATE COTTON POLO

577



## MATERIAL / WEIGHT

100% Combed Ringspun Cotton  
White: 210g/m<sup>2</sup>, Colours: 215g/m<sup>2</sup>

## PACKING

Pack 6/ Carton 36

### 577M MEN'S ULTIMATE COTTON POLO SIZES XS-4XL

- » Classic Fit
- » Contemporary cut
- » Fine honeycomb pique structure
- » Reinforced shoulder seams with herringbone neck tape
- » Side vents with internal herringbone taping for added stability and better fit
- » Classic style flat knit cuffs
- » Pre-shrunk and suitable for wash up to 60°C



### 577F LADIES' ULTIMATE COTTON POLO SIZES XS-2XL

- » Classic Fit
- » Contemporary cut
- » Fine honeycomb pique structure
- » Reinforced shoulder seams with herringbone neck tape
- » Side vents with internal herringbone taping for added stability and better fit
- » Sleeves with twin needle hem
- » Pre-shrunk and suitable for wash up to 60°C



## WATER SAVINGS

Modern technologies reduce water consumption in the production process.



577M

# CLASSIC POLYCOTTON POLO

539



## MATERIAL / WEIGHT

65% Polyester, 35% Ringspun Cotton  
White: 210g/m<sup>2</sup>, Colours: 215g/m<sup>2</sup>

## PACKING

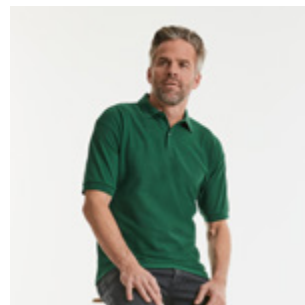
Pack 6/Carton 36

### 539M MEN'S CLASSIC POLYCOTTON POLO

SIZES XS-6XL

- » Classic Fit
- » Fine honeycomb pique structure
- » Double yarn construction
- » Reinforced shoulder seams with neck tape
- » Classic style flat knit cuffs
- » Twin needle hem at bottom for added stability

3XL-4XL only available in Bottle Green, Black, Bright Royal, Classic Red, French Navy, Light Oxford and White. 5XL & 6XL only available in Black, Bright Royal, French Navy and White.

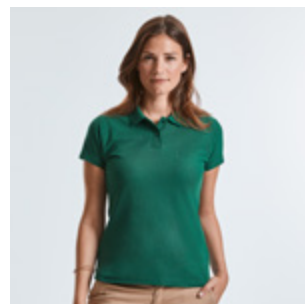


### 539F LADIES' CLASSIC POLYCOTTON POLO

SIZES XS-4XL

- » Classic Fit
- » Fine honeycomb pique structure
- » Double yarn construction
- » Reinforced shoulder seams with neck tape
- » Open sleeve with twin needle hem
- » Twin needle hem at bottom for added stability

3XL & 4XL only available in Bottle Green, Bright Royal and French Navy



### 539B CHILDREN'S CLASSIC POLYCOTTON POLO

SIZES 1-12 YEARS

- » Classic Fit
- » Fine honeycomb pique structure
- » Double yarn construction
- » Reinforced shoulder seams with neck tape
- » Classic style flat knit cuffs
- » Name label
- » Twin needle hem at bottom for added stability



# HARDWEARING POLYCOTTON POLO

599



## MATERIAL / WEIGHT

65% Polyester, 35% Ringspun Cotton  
White: 210g/m<sup>2</sup>, Colours: 215g/m<sup>2</sup>

## PACKING

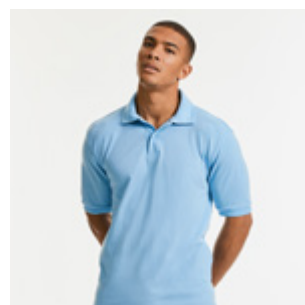
Pack 6/Carton 36

### 599M HARDWEARING POLYCOTTON POLO

SIZES XS-6XL

- » Classic fit with side vents
- » Side vents for ease of fit
- » Reinforced shoulder seams with neck tape
- » Flat knit collar and cuffs with double ripple effect
- » Twin needle hem at bottom for added stability

5XL & 6XL only available in Black, Bottle Green, Bright Royal, French Navy and White



# STRETCH POLO

566 • 567



## MATERIAL / WEIGHT

95% Combed Ringspun Cotton; 5% LYCRA®  
 Light Oxford: 88% Combed Ringspun Cotton,  
 7% Viscose, 5% LYCRA®  
 White: 205g/m², Colours: 210g/m²

## PACKING

Pack 6/ Carton 36

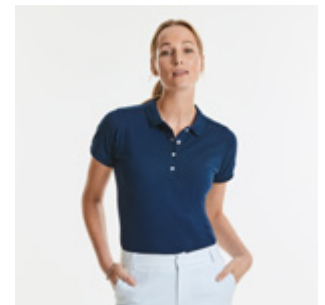
### 566M MEN'S FITTED STRETCH POLO FIT FITTED • SIZES S-3XL

- » Slim leaf collar
- » Ribbed cuffs
- » Strip of self-colour fabric along shoulder seam
- » Shorter side vents with herringbone tape
- » Soft handfeel
- » Contrast buttons



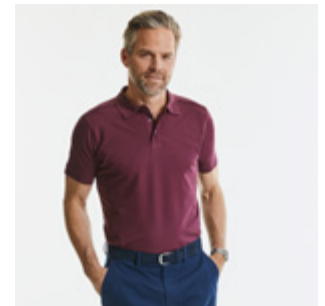
### 566F LADIES' FITTED STRETCH POLO FIT FITTED • SIZES XS-2XL

- » Slim leaf collar
- » Ribbed cuffs
- » Strip of self-colour fabric along shoulder seam
- » Shorter side vents with herringbone tape
- » Soft handfeel
- » Slimmer, 4 button placket
- » Contrast buttons



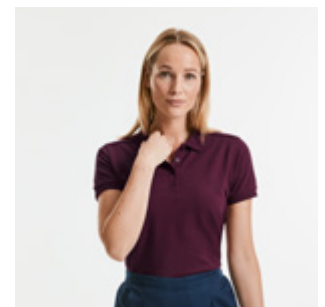
### 567M MEN'S TAILORED STRETCH POLO FIT TAILORED • SIZES S-3XL

- » Slim leaf collar
- » Ribbed cuffs
- » Strip of self-colour fabric along shoulder seam
- » Shorter side vents with herringbone tape
- » Soft handfeel
- » Dyed-to-match buttons
- » Label free: Small size label in the neck (incl. product number)



### 567F LADIES' TAILORED STRETCH POLO FIT TAILORED • SIZES XS-2XL

- » Slim leaf collar
- » Ribbed cuffs
- » Strip of self-colour fabric along shoulder seam
- » Shorter side vents with herringbone tape
- » Soft handfeel
- » Slimmer, 4 button placket
- » Dyed-to-match buttons
- » Label free: Small size label in the neck (incl. product number)



## PURE ORGANIC SWEATS

208 · 209



### MATERIAL / WEIGHT

100% Combed Ringspun Cotton (organic)  
300g/m<sup>2</sup>

### PACKING

Pack 3/ Carton 24

### 208M PURE ORGANIC REVERSIBLE SWEAT

SIZES XS-3XL

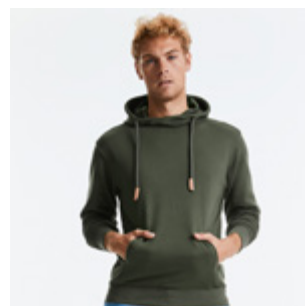
- » Contemporary fit and modern design
- » Unbrushed Twill-Terry
- » Label free on neck: inner small pocket on hem is hiding size and care labels
- » Ribbed cuffs, neckline and body hem with LYCRA®
- » Soft handfeel
- » Matching herringbone tape at inside back neck



### 209M PURE ORGANIC HIGH COLLAR HOODED SWEAT

SIZES XS-3XL

- » Contemporary fit and modern design
- » Unbrushed Twill-Terry
- » Label free: Small size label in the neck (incl. product number)
- » Elastane on ribbed cuffs and waistband trim to retain shape and smart appearance
- » Perfect high collar hood construction with two piece workmanship for better print positioning
- » Half moon neck insert (locker patch) for individualisation



## AUTHENTIC SWEATS

262 · 271 · 265 · 266 · 267 · 270 · 268



### MATERIAL / WEIGHT

80% Combed Ringspun Cotton, 20% Polyester  
100% cotton face yarn (3-thread-construction)  
280g/m<sup>2</sup>

### PACKING

Pack 3/ Carton 24  
Pack 6/ Carton 36 (262M)

### 262M THE AUTHENTIC SWEAT

SIZES XS-4XL

- » Straighter cut for a modern look
- » 100% cotton face yarn provides the best surface for decoration
- » Herringbone neck tape for comfort and stability
- » Side seams improve fit

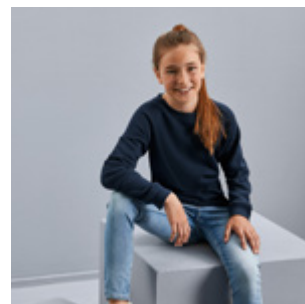
4XL only available in Black, French Navy and Light Oxford



### 271B CHILDREN'S AUTHENTIC RAGLAN SWEAT

SIZES 3-14 YEARS

- » Straighter cut for a modern look
- » 100% cotton face yarn provides the best surface for decoration
- » Herringbone neck tape for comfort and stability
- » Side seams improve fit
- » Raglan sleeve solution for better movement and adding additional space to the wearer





**265M MEN'S AUTHENTIC HOODED SWEAT**  
SIZES XS-4XL

- » Straighter cut for a modern look
- » 100% cotton face yarn provides the best surface for decoration
- » Flat, chunky drawcords
- » Double layer hood with cover seam drawcord channel
- » Kangaroo pockets

4XL only available in Black, French Navy and Light Oxford



**265F LADIES' AUTHENTIC HOODED SWEAT**  
SIZES XS-XL

- » Modern feminine tailored fit
- » 100% cotton face yarn provides the best surface for decoration
- » Slimmer shoulders and leaner arms
- » Flat, chunky drawcords
- » Double layer hood with cover seam drawcord channel
- » Kangaroo pockets



**265B CHILDREN'S AUTHENTIC HOODED SWEAT**  
SIZES 3-14 YEARS

- » Straighter cut for a modern look
- » 100% cotton face yarn provides the best surface for decoration
- » Flat, chunky drawcords
- » Double layered hood
- » Kangaroo pockets
- » No drawcords



**266M MEN'S AUTHENTIC ZIPPED HOOD JACKET**  
SIZES XS-4XL

- » Straighter cut for a modern look
- » 100% cotton face yarn provides the best surface for decoration
- » Flat, chunky drawcords
- » Double layer hood with cover seam drawcord channel
- » Side seam pockets
- » YKK Metal (Antique Silver) Full Zipper
- » Kissing (covered) zip for full cross body decoration

4XL only available in Black, French Navy and Light Oxford



**266F LADIES' AUTHENTIC ZIPPED HOOD JACKET**  
SIZES XS-XL

- » Modern feminine tailored fit
- » 100% cotton face yarn provides the best surface for decoration
- » Flat, chunky drawcords
- » Double layer hood with cover seam drawcord channel
- » Side seam pockets
- » YKK Metal (Antique Silver) Full Zipper
- » Kissing (covered) zip for full cross body decoration



**266B CHILDREN'S AUTHENTIC ZIPPED HOOD JACKET**  
SIZES 3-14 YEARS

- » Straighter cut for a modern look
- » 100% cotton face yarn provides the best surface for decoration
- » No drawcords
- » Double layered hood
- » Side seam pockets
- » YKK Metal (Antique Silver) Full Zipper
- » Kissing (covered) zip for full cross body decoration
- » Top stitching for a greater seam resistance



**267M MEN'S AUTHENTIC SWEAT JACKET**

SIZES XS-4XL

- » Straighter cut for a modern look
- » 100% cotton face yarn provides the best surface for decoration
- » Herringbone neck tape for comfort and stability
- » Side seam pockets
- » Welt pocket workmanship for a smooth and soft pocket entry
- » Self-fabric cadet collar
- » YKK Metal (Antique Silver) Full Zipper

4XL only available in Black, French Navy and Light Oxford



**267F LADIES' AUTHENTIC SWEAT JACKET**

SIZES XS-XL

- » Modern feminine tailored fit
- » 100% cotton face yarn provides the best surface for decoration
- » Herringbone neck tape for comfort and stability
- » Side seam pockets
- » Welt pocket workmanship for a smooth and soft pocket entry
- » Self-fabric cadet collar
- » YKK Metal (Antique Silver) Full Zipper



**270M AUTHENTIC QUARTER ZIP SWEAT**

SIZES XS-4XL

- » 100% cotton face yarn provides the best surface for decoration
- » Herringbone neck tape for comfort and stability with front facing shoulder seams
- » Brushed fleece
- » Kissing (covered) zip for full cross body decoration
- » Self-fabric cadet collar
- » YKK Metal (Antique Silver) ¼ zip



**268M MEN'S AUTHENTIC JOG PANTS**

SIZES S-2XL

- » Contemporary fit and modern design
- » 100% cotton face yarn provides the best surface for decoration
- » Self-fabric welt pockets with concealed zip fastening
- » Back patch pocket
- » Flat, chunky drawcords
- » Rib at cuff and waistband



**OEKO-TEX**

**100% CERTIFIED**

All Russell products are Oeko-Tex® Standard 100 (class II) certified. 08-5941 Shirley



266F

# AUTHENTIC MELANGE SWEATS

260 · 261 · 263



## MATERIAL / WEIGHT

75% Combed Ringspun Cotton, 21% Polyester,  
\*4% Viscose \*Carbon Melange: 77% cotton,  
23% Polyester  
280g/m<sup>2</sup>

## PACKING

Pack 3/ Carton 24

### 260M AUTHENTIC MELANGE SWEAT SIZES XS-3XL

- » Straighter cut for a modern look
- » High quality surface for best print results
- » Half moon neck insert for individualisation
- » Label free: Small size label in the neck (incl. product number)
- » Fashionable V-insert with decorative seam at collar
- » Fashionable offset shoulder seams



### 261M MEN'S AUTHENTIC MELANGE HOODED SWEAT SIZES XS-3XL

- » Straighter cut for a modern look
- » High quality surface for best print results
- » Half moon neck insert for individualisation
- » Label free: Small size label in the neck (incl. product number)
- » Inserted kangaroo pocket to easily print over seams



### 261F LADIES' AUTHENTIC MELANGE HOODED SWEAT SIZES XS-XL

- » Modern feminine tailored fit
- » High quality surface for best print results
- » Half moon neck insert for individualisation
- » Label free: Small size label in the neck (incl. product number)
- » Inserted kangaroo pocket to easily print over seams



### 263M MEN'S AUTHENTIC MELANGE ZIPPED HOOD SWEAT SIZES XS-3XL

- » Straighter cut for a modern look
- » High quality surface for best print results
- » Half moon neck insert for individualisation
- » Label free: Small size label in the neck (incl. product number)
- » Inserted kangaroo pocket to easily print over seams
- » YKK Metal (Antique Silver) Full Zipper
- » Kissing (covered) zip for full cross body decoration



### 263F LADIES' AUTHENTIC MELANGE ZIPPED HOOD SWEAT SIZES XS-XL

- » Modern feminine tailored fit
- » High quality surface for best print results
- » Half moon neck insert for individualisation
- » Label free: Small size label in the neck (incl. product number)
- » Inserted kangaroo pocket to easily print over seams
- » YKK Metal (Antique Silver) Full Zipper
- » Kissing (covered) zip for full cross body decoration



# CLASSIC SWEATSHIRT

762



## MATERIAL / WEIGHT

50% Combed Ringspun Cotton, 50% Polyester  
295g/m<sup>2</sup>

## PACKING

Pack 6/ Carton 36

### 762M CLASSIC SWEATSHIRT SIZES XS-4XL

- » SpotShield™ stain resistant coating
- » Tubular body construction for added stability
- » Herringbone neck tape for comfort
- » Raglan sleeve
- » 1x1 rib trim with elastane on hem and cuffs

3XL & 4XL only available in Bright Royal, Bottle Green and French Navy



### 762B CHILDREN'S CLASSIC SWEATSHIRT SIZES 1-12 YEARS

- » SpotShield™ stain resistant coating
- » Tubular body construction for added stability
- » Herringbone neck tape for comfort
- » Raglan sleeve
- » 1x1 rib trim with elastane on hem and cuffs
- » Name label



# V-NECK SWEATSHIRT & CARDIGAN

272 • 273



## MATERIAL / WEIGHT

50% Combed Ringspun Cotton, 50% Polyester  
295g/m<sup>2</sup>

## PACKING

272B: Pack 3/ Carton 36  
273B: Pack 3/ Carton 24

### 272B CHILDREN'S V-NECK SWEATSHIRT SIZES 3-12 YEARS

- » The V-Neck Sweat and Cardigan combine smartness with style and comfort
- » Ideal to wear with polo shirt, open neck shirt or shirt & tie
- » Ringspun cotton for softer hand feel
- » Outstanding performance - wash after wash
- » Set-in sleeves and side seams
- » Name label



### 273B CHILDREN'S SWEATSHIRT CARDIGAN SIZES 3-12 YEARS

- » The V-Neck Sweat and Cardigan combine smartness with style and comfort
- » Ideal to wear with polo shirt, open neck shirt or shirt & tie
- » Ringspun cotton for softer hand feel
- » Outstanding performance - wash after wash
- » Set-in sleeves and side seams
- » Side seam pockets
- » Name label



# HOODED SWEATSHIRT

575



## MATERIAL / WEIGHT

50% Combed Ringspun Cotton, 50% Polyester  
295g/m<sup>2</sup>

## PACKING

Pack 6/ Carton 24

### 575M HOODED SWEATSHIRT SIZES XS-2XL

- » Straighter cut for a modern look
- » Herringbone neck tape for comfort and stability
- » Double layer hood with cover seam drawcord channel
- » shoulders and leaner arms
- » Flat, chunky drawcords
- » Kangaroo pocket with bartacks



### 575B CHILDREN'S HOODED SWEATSHIRT SIZES 3-12 YEARS

- » Straighter cut for a modern look
- » Herringbone neck tape for comfort and stability
- » Double layer hood with cover seam drawcord channel
- » Slimmer shoulders and leaner arms
- » No drawcord in line with health and safety legislation
- » Kangaroo pocket with bartacks



# SWEAT PANTS

750



## MATERIAL / WEIGHT

50% Combed Ringspun Cotton, 50% Polyester  
295g/m<sup>2</sup>

## PACKING

Pack 6/ Carton 36

### 750B CHILDREN'S SWEAT PANTS SIZES 3-12 YEARS

- » Elasticated waistband and leg ends
- » Side pockets
- » No drawcord in line with health and safety legislation



# POLYCOTTON POPLIN SHIRT

934 · 935 · 924 · 925 · 926



**EC** Easy Care

## MATERIAL / WEIGHT

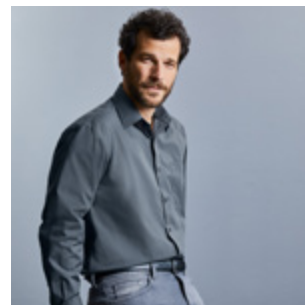
65% Polyester, 35% Cotton Poplin  
White: 110g/m<sup>2</sup>, Colours: 105g/m<sup>2</sup>

## PACKING

Pack 1/ Carton 12

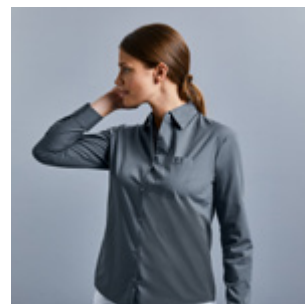
### 934M MEN'S LONG SLEEVE CLASSIC POLYCOTTON POPLIN SHIRT FIT CLASSIC · SIZES S-4XL

- » Easy Care
- » Left chest pocket
- » Curved hem
- » Stiffened Kent boned collar
- » Back yoke with 2 side pleats
- » Rounded 2 button adjustable cuffs



### 934F LADIES' LONG SLEEVE CLASSIC POLYCOTTON POPLIN SHIRT FIT CLASSIC · SIZES XS-4XL

- » Easy Care
- » Left chest pocket
- » Curved hem
- » Classic Collar
- » Rounded 2 button adjustable cuffs



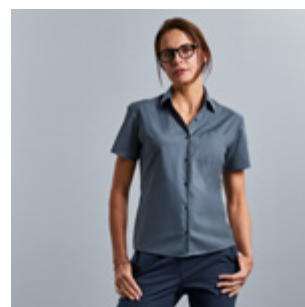
### 935M MEN'S SHORT SLEEVE CLASSIC POLYCOTTON POPLIN SHIRT FIT CLASSIC · SIZES S-4XL

- » Easy Care
- » Left chest pocket
- » Curved hem
- » Stiffened Kent boned collar
- » Back yoke with 2 side pleats



### 935F LADIES' SHORT SLEEVE CLASSIC POLYCOTTON POPLIN SHIRT FIT CLASSIC · SIZES XS-4XL

- » Easy Care
- » Left chest pocket
- » Curved hem
- » Classic Collar



### 924M MEN'S LONG SLEEVE TAILORED POLYCOTTON POPLIN SHIRT FIT TAILORED · SIZES S-4XL

- » Easy Care
- » Curved hem
- » Stiffened Kent boned collar
- » Rounded 2 button adjustable cuffs with option for cuff links



**924F LADIES' LONG SLEEVE FITTED POLYCOTTON POPLIN SHIRT**  
FIT **FITTED** · SIZES **XS-4XL**

- » Easy Care
- » Curved hem
- » Stylish yoke design
- » Concealed placket
- » Darts on bust, front hem and back panel for fitted shape
- » Decorative top stitch on darts
- » Rounded double buttoned cuffs



**925M MEN'S SHORT SLEEVE TAILORED POLYCOTTON POPLIN SHIRT**  
FIT **TAILORED** · SIZES **S-4XL**

- » Easy Care
- » Curved hem
- » Stiffened Kent boned collar
- » Double turnback hem on sleeves



**925F LADIES' CAP SLEEVE FITTED POLYCOTTON POPLIN SHIRT**  
FIT **FITTED** · SIZES **XS-4XL**

- » Easy Care
- » Curved hem
- » Stylish yoke design
- » Concealed placket
- » Darts on bust, front hem and back panel for fitted shape
- » Decorative top stitch on darts
- » Fashionable cap sleeves



**926F LADIES' 3/4 SLEEVE FITTED POLYCOTTON POPLIN SHIRT**  
FIT **FITTED** · SIZES **XS-4XL**

- » Easy Care
- » Curved hem
- » Stylish yoke design
- » Concealed placket
- » Darts on bust, front hem and back panel for fitted shape
- » Decorative top stitch on darts
- » Narrow 2 button adjustable cuffs



# 100%

## TRANSPARENCY

Today we have 100% transparency by listing all of our suppliers details on our website.

934F

# PURE COTTON POPLIN SHIRT

936 • 937



**EC** Easy Care

## MATERIAL / WEIGHT

100% Cotton Poplin  
White: 120g/m<sup>2</sup>, Colours: 125g/m<sup>2</sup>

## PACKING

Pack 1/ Carton 12

### 936M MEN'S LONG SLEEVE CLASSIC PURE COTTON POPLIN SHIRT FIT CLASSIC • SIZES S-4XL

- » Easy Care
- » Left chest pocket
- » Classic Kent boned collar
- » Back yoke with 2 side pleats
- » Rounded 2 button adjustable cuffs
- » Straight hem



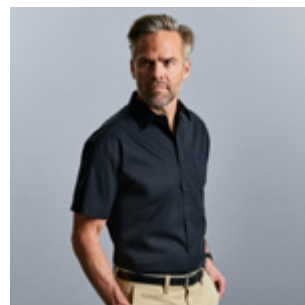
### 936F LADIES' LONG SLEEVE CLASSIC PURE COTTON POPLIN SHIRT FIT CLASSIC • SIZES XS-4XL

- » Easy Care
- » Left chest pocket
- » Classic Collar
- » Rounded 2 button adjustable cuffs
- » Curved hem



### 937M MEN'S SHORT SLEEVE CLASSIC PURE COTTON POPLIN SHIRT FIT CLASSIC • SIZES S-4XL

- » Easy Care
- » Left chest pocket
- » Classic Kent boned collar
- » Back yoke with 2 side pleats
- » Straight hem



### 937F LADIES' SHORT SLEEVE CLASSIC PURE COTTON POPLIN SHIRT FIT CLASSIC • SIZES XS-4XL

- » Easy Care
- » Left chest pocket
- » Classic Collar
- » Curved hem





# STRETCH SHIRT

946 · 947



**EC** Easy Care

## MATERIAL / WEIGHT

97% Cotton, 3% Elastane Poplin  
140g/m<sup>2</sup>

## PACKING

Pack 1/ Carton 12

### 946M MEN'S LONG SLEEVE FITTED STRETCH SHIRT FIT **FITTED** · SIZES **S-4XL**

- » Easy Care
- » Curved hem
- » Stiffened New Kent boned collar
- » Mitred double buttoned cuffs



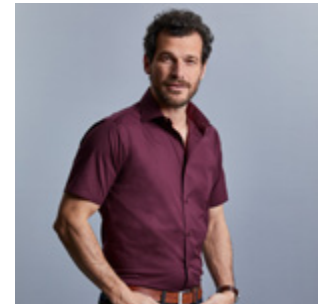
### 946F LADIES' 3/4 SLEEVE FITTED STRETCH SHIRT FIT **FITTED** · SIZES **XS-2XL**

- » Easy Care
- » Curved hem
- » Darts on bust front hem and back panel for fitted shape
- » Stylish elbow length 3/4 sleeve with split cuffs



### 947M MEN'S SHORT SLEEVE FITTED STRETCH SHIRT FIT **FITTED** · SIZES **S-4XL**

- » Easy Care
- » Curved hem
- » Stiffened New Kent boned collar



### 947F LADIES' SHORT SLEEVE FITTED STRETCH SHIRT FIT **FITTED** · SIZES **XS-2XL**

- » Easy Care
- » Curved hem
- » Darts on bust front hem and back panel for fitted shape
- » Stylish capped short sleeves



# ULTIMATE STRETCH SHIRT

966 · 960 · 961



**EC** Easy Care



## MATERIAL / WEIGHT

75% Cotton, 25% Elastomultiester  
(LYCRA® T400® fibre) Poplin  
White: 125g/m<sup>2</sup>, Colours: 130g/m<sup>2</sup>

## PACKING

Pack 1/ Carton 12

### 966M MEN'S LONG SLEEVE TAILORED CONTRAST ULTIMATE STRETCH SHIRT FIT TAILORED · SIZES S-4XL

- » Easy Care, durable fabric and longer fit
- » Under-Button-Down collar
- » Fashionable two-coloured contrasts: cuffs (inside) with zigzag stitch, collar (inside)

- » Contrasting colours at cuff buttonhole and lowest buttonhole
- » Rounded 2 button adjustable cuffs with option for cuff links



### 960M MEN'S LONG SLEEVE FITTED ULTIMATE STRETCH SHIRT FIT FITTED · SIZES S-4XL

- » Easy Care, durable fabric and longer fit
- » Excellent shape retention for a lasting fit
- » Moisture management for cool comfort

- » Stiffened New Kent boned collar
- » Square edged 2 button adjustable cuffs, with option for cuff links



### 960F LADIES' LONG SLEEVE FITTED ULTIMATE STRETCH SHIRT FIT FITTED SIZES XS-4XL

- » Easy Care, durable fabric and longer fit
- » Excellent shape retention for a lasting fit
- » Moisture management for cool comfort

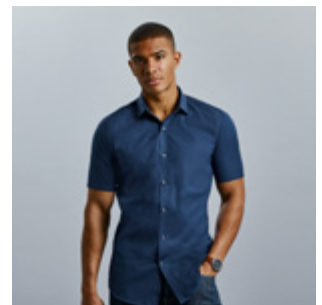
- » Neat modern collar
- » Princess cut
- » Cocktail cuffs with 2 button fastening with extended gauntlet



### 961M MEN'S SHORT SLEEVE FITTED ULTIMATE STRETCH SHIRT FIT FITTED SIZES S-4XL

- » Easy Care, durable fabric and longer fit
- » Excellent shape retention for a lasting fit
- » Moisture management for cool comfort
- » Stiffened New Kent boned collar

- » Neat modern collar
- » Princess cut



### 961F LADIES' SHORT SLEEVE FITTED ULTIMATE STRETCH SHIRT FIT FITTED · SIZES XS-4XL

- » Easy Care, durable fabric and longer fit
- » Excellent shape retention for a lasting fit
- » Moisture management for cool comfort

- » Neat modern collar
- » Princess cut



# WASHED OXFORD SHIRT

920



EC Easy Care

## MATERIAL / WEIGHT

100% Cotton Oxford  
130g/m<sup>2</sup>

## PACKING

Pack 1/ Carton 12

### 920M MEN'S LONG SLEEVE TAILORED WASHED OXFORD SHIRT FIT TAILORED · SIZES S-4XL

- » Easy Care
- » Button down collar
- » 100% combed ring spun cotton
- » Garment washed
- » Fashionable contrasts: cuffs (inside), collar (inside)
- » Contrast buttons
- » Left chest pocket
- » Removable fashionable loop for optional attachment of ties or glasses
- » Rounded 2 button adjustable cuffs
- » Curved hem



920M

# OXFORD SHIRT

928 • 922 • 923 • 932 • 933



**EC** Easy Care

## MATERIAL / WEIGHT

70% Cotton, 30% Polyester Oxford  
White: 130g/m<sup>2</sup>, Colours: 135g/m<sup>2</sup>

## PACKING

Pack 1/ Carton 12

### 928M MEN'S LONG SLEEVE TAILORED BUTTON-DOWN OXFORD SHIRT FIT TAILORED • SIZES S-4XL

- » Easy Care
- » Curved hem
- » Button down collar
- » Darts at back improve fit
- » Left chest pocket
- » Rounded 2 button adjustable cuffs



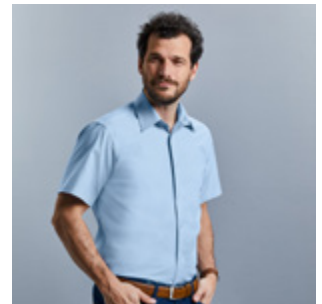
### 922M MEN'S LONG SLEEVE TAILORED OXFORD SHIRT FIT TAILORED • SIZES S-4XL

- » Easy Care
- » Curved hem
- » Stiffened Kent boned collar
- » Rounded 2 button adjustable cuffs, with option for cuff links



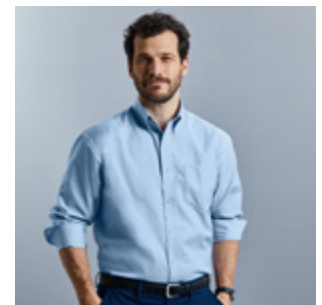
### 923M MEN'S SHORT SLEEVE TAILORED OXFORD SHIRT FIT TAILORED • SIZES S-4XL

- » Easy Care
- » Curved hem
- » Stiffened Kent boned collar



### 932M MEN'S LONG SLEEVE CLASSIC OXFORD SHIRT FIT CLASSIC • SIZES S-6XL

- » Easy Care
- » Curved hem
- » Button down collar
- » Back yoke with 2 side pleats
- » Left chest pocket
- » Rounded 2 button adjustable cuffs



### 932F LADIES' LONG SLEEVE TAILORED OXFORD SHIRT FIT TAILORED • SIZES XS-6XL

- » Easy Care
- » Curved hem
- » 2 button collar stand with classic shaped collar
- » Darts at bustline and back for tailored fit
- » Rounded 2 button adjustable cuffs



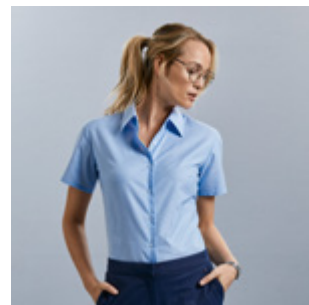
**933M MEN'S SHORT SLEEVE CLASSIC OXFORD SHIRT**  
**FIT CLASSIC · SIZES S-6XL**

- » Easy Care
- » Curved hem
- » Button down collar
- » Back yoke with 2 side pleats
- » Left chest pocket



**933F LADIES' SHORT SLEEVE TAILORED OXFORD SHIRT**  
**FIT TAILORED · SIZES XS-6XL**

- » Easy Care
- » Curved hem
- » 2 button collar stand with classic shaped collar
- » Darts at bustline and back for tailored fit



928M



933F · 933M



933M

# ULTIMATE NON-IRON SHIRT

956 • 957 • 958 • 959



## MATERIAL / WEIGHT

100% Cotton Micro Twill  
120g/m<sup>2</sup>

## PACKING

Pack 1/ Carton 12

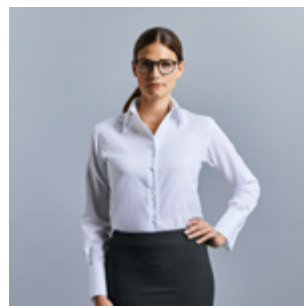
### 956M MEN'S LONG SLEEVE CLASSIC ULTIMATE NON-IRON SHIRT FIT CLASSIC • SIZES S-4XL

- » Easy Care
  - » Non-iron
  - » Curved hem
  - » Button down collar
  - » Back yoke with 2 side pleats
  - » Left chest pocket
- » Contemporary size mitred cuffs, adjustable with two buttons and with option for cuff links



### 956F LADIES' LONG SLEEVE TAILORED ULTIMATE NON-IRON SHIRT FIT TAILORED • SIZES XS-4XL

- » Easy Care
  - » Non-iron
  - » Curved hem
  - » Stylish and relaxed long edged collar
  - » Twin button fastening
- » Cocktail cuffs with single button fastening with extended gauntlet and option for cuff links



### 957M MEN'S SHORT SLEEVE CLASSIC ULTIMATE NON-IRON SHIRT FIT CLASSIC • SIZES S-4XL

- » Easy Care
- » Non-iron
- » Curved hem
- » Button down collar
- » Back yoke with 2 side pleats
- » Left chest pocket



### 957F LADIES' SHORT SLEEVE TAILORED ULTIMATE NON-IRON SHIRT FIT TAILORED • SIZES XS-4XL

- » Easy Care
- » Non-iron
- » Curved hem
- » Stylish and relaxed long edged collar
- » Twin button fastening



958M MEN'S LONG SLEEVE TAILORED ULTIMATE NON-IRON SHIRT  
FIT TAILORED · SIZES S-4XL

- » Easy Care
- » Non-iron
- » Curved hem
- » Stiffened Kent boned collar
- » Stylish, mitred cuffs, adjustable with two buttons and option for cuff links

30 36 BZ



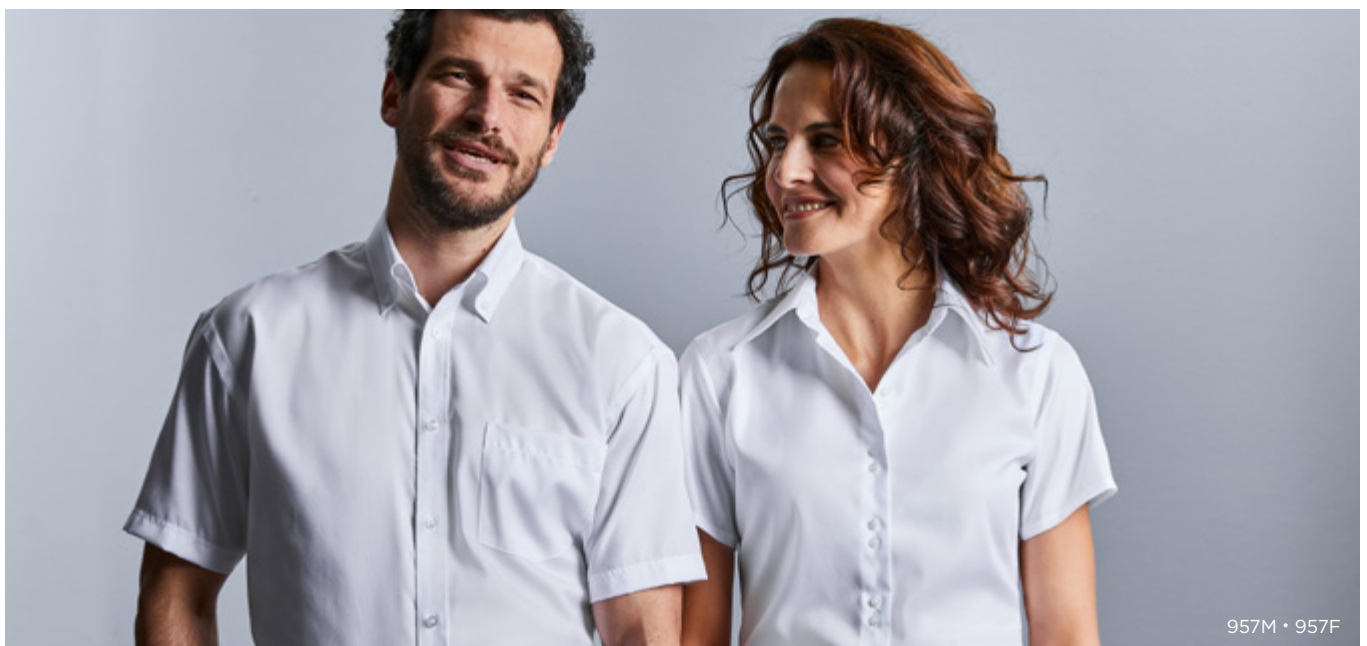
959M MEN'S SHORT SLEEVE TAILORED ULTIMATE NON-IRON SHIRT  
FIT TAILORED · SIZES S-4XL

- » Easy Care
- » Non-iron
- » Curved hem
- » Stiffened Kent boned collar

30 36 BZ



956F



957M · 957F

# COOLMAX® SHIRT

972 • 973



COOLMAX®

EC Easy Care

## MATERIAL / WEIGHT

70% Cotton, 30% Coolmax®-Polyester, Micro Twill  
White: 110 g/m<sup>2</sup>; Colours: 105 g/m<sup>2</sup>

## PACKING

Pack 1/ Carton 12

### 972M MEN'S LONG SLEEVE TAILORED COOLMAX® SHIRT FIT TAILORED • SIZES S-4XL

- » Easy Care
- » Stiffened New Kent boned collar
- » Breathability and moisture regulation thanks to Coolmax® fibre technology
- » Durable Micro-Twill

- » Back yoke with 2 side pleats
- » Left chest pocket
- » Mitred 2 button adjustable cuffs



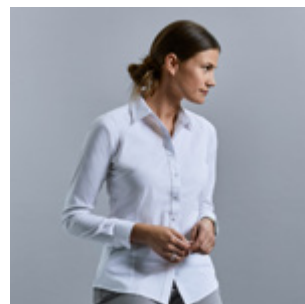
30 42



### 972F LADIES' LONG SLEEVE TAILORED COOLMAX® SHIRT FIT TAILORED • SIZES XS-4XL

- » Easy Care
- » Neat modern collar
- » Breathability and moisture regulation thanks to Coolmax® fibre technology
- » Durable Micro-Twill

- » Darts on bust front hem and back panel for tailored shape
- » Mitred 2 button adjustable cuffs



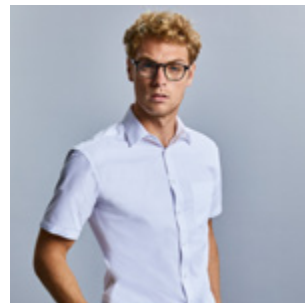
30 42



### 973M MEN'S SHORT SLEEVE TAILORED COOLMAX® SHIRT FIT TAILORED • SIZES S-4XL

- » Easy Care
- » Stiffened New Kent boned collar
- » Breathability and moisture regulation thanks to Coolmax® fibre technology
- » Durable Micro-Twill

- » Back yoke with 2 side pleats
- » Left chest pocket



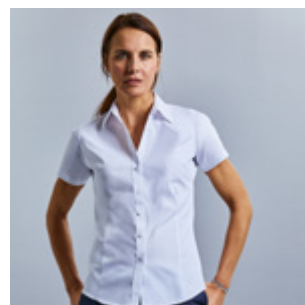
30 42



### 973F LADIES' SHORT SLEEVE TAILORED COOLMAX® SHIRT FIT TAILORED • SIZES XS-4XL

- » Easy Care
- » Neat modern collar
- » Breathability and moisture regulation thanks to Coolmax® fibre technology
- » Durable Micro-Twill

- » Darts on bust front hem and back panel for tailored shape



30 42





# CLASSIC TWILL SHIRT

916 · 917



## MATERIAL / WEIGHT

100% Cotton Twill  
130g/m<sup>2</sup>

## PACKING

Pack 1/ Carton 12

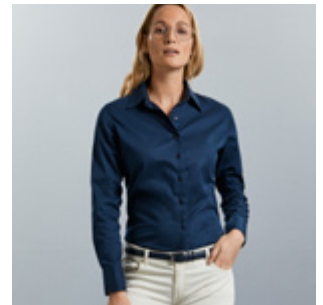
### 916M MEN'S LONG SLEEVE CLASSIC TWILL SHIRT FIT CLASSIC · SIZES S-4XL

- » Soft to touch peached fabric
- » Decorative fabric patch below back yoke
- » Pointed fabric patches on side seam hem
- » Dyed-to-match grosgrain back neck tape
- » Stylish double buttoned rounded edge cuffs
- » Curved hem
- » Button down collar
- » Left chest pocket



### 916F LADIES' LONG SLEEVE CLASSIC TWILL SHIRT FIT CLASSIC · SIZES XS-2XL

- » Soft to touch peached fabric
- » Decorative fabric patch below back yoke
- » Pointed fabric patches on side seam hem
- » Dyed-to-match grosgrain back neck tape
- » Stylish double buttoned rounded edge cuffs
- » Curved hem
- » Relaxed collar



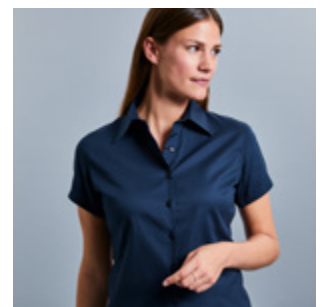
### 917M MEN'S SHORT SLEEVE CLASSIC TWILL SHIRT FIT CLASSIC · SIZES S-4XL

- » Soft to touch peached fabric
- » Decorative fabric patch below back yoke
- » Pointed fabric patches on side seam hem
- » Dyed-to-match grosgrain back neck tape
- » Curved hem
- » Button down collar
- » Left chest pocket



### 917F LADIES' SHORT SLEEVE CLASSIC TWILL SHIRT FIT CLASSIC · SIZES XS-2XL

- » Soft to touch peached fabric
- » Decorative fabric patch below back yoke
- » Pointed fabric patches on side seam hem
- » Dyed-to-match grosgrain back neck tape
- » Curved hem
- » Relaxed collar



# ROLL SLEEVE TWILL SHIRT

918 • 919



## MATERIAL / WEIGHT

100% Cotton Twill  
130g/m<sup>2</sup>

## PACKING

Pack 1/ Carton 12

### 918M MEN'S ROLL LONG SLEEVE FITTED TWILL SHIRT FIT FITTED • SIZES S-4XL

- » Relaxed collar
- » Dyed-to-match grosgrain fabric patches at side seam hem
- » Dyed-to-match grosgrain back neck tape
- » Two chest pockets

- » Button on outer sleeve and fabric tab on inside of sleeve allow it to be rolled up and tabbed
- » Square edged adjustable cuffs
- » Curved hem



### 918F LADIES' ROLL LONG SLEEVE FITTED TWILL SHIRT FIT FITTED • SIZES S-4XL

- » Relaxed collar
- » Dyed-to-match grosgrain fabric patches at side seam hem
- » Dyed-to-match grosgrain back neck tape
- » Two chest pockets

- » Button on outer sleeve and fabric tab on inside of sleeve allow it to be rolled up and tabbed
- » Square edged adjustable cuffs
- » Curved hem



### 919M MEN'S ROLL LONG SLEEVE FITTED TWILL SHIRT FIT FITTED • SIZES S-4XL

- » Relaxed collar
- » Dyed-to-match grosgrain fabric patches at side seam hem
- » Dyed-to-match grosgrain back neck tape
- » Two chest pockets

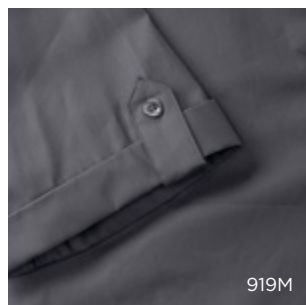
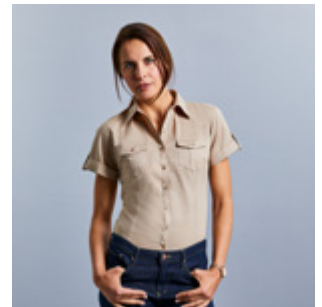
- » Button on outer sleeve and fabric tab on inside of sleeve allow it to be rolled up and tabbed
- » Curved hem



### 919F LADIES' ROLL LONG SLEEVE FITTED TWILL SHIRT FIT FITTED • SIZES S-4XL

- » Relaxed collar
- » Dyed-to-match grosgrain fabric patches at side seam hem
- » Dyed-to-match grosgrain back neck tape
- » Two chest pockets

- » Button on outer sleeve and fabric tab on inside of sleeve allow it to be rolled up and tabbed
- » Curved hem



# HERRINGBONE SHIRT

964 • 962 • 963



## MATERIAL / WEIGHT

84% Cotton, 16% Polyester Herringbone  
White: 125g/m<sup>2</sup>, Colours: 130g/m<sup>2</sup>

## PACKING

Pack 1/ Carton 12

### 964M MEN'S LONG SLEEVE TAILORED CONTRAST HERRINGBONE SHIRT FIT TAILORED • SIZES S-4XL

- » Easy Care
- » Longer fit and Narrow placket
- » Curved hem
- » Under-Button-Down collar
- » Fashionable contrasts: cuffs (inside), collar (inside) with contrast piping

- » Contrasting colours at cuff buttonhole and lowest buttonhole
- » Darts at back improve fit



### 962M MEN'S LONG SLEEVE TAILORED HERRINGBONE SHIRT FIT TAILORED • SIZES S-4XL

- » Easy Care
- » Longer fit
- » Narrow placket
- » No show through
- » Curved hem

- » Stiffened Kent boned collar
- » Rounded 2 button adjustable cuffs, with option for cuff links



### 962F LADIES' LONG SLEEVE TAILORED HERRINGBONE SHIRT FIT TAILORED • SIZES XS-4XL

- » Easy Care
- » Longer fit
- » Narrow placket
- » No show through
- » Curved hem
- » Neat modern collar

- » Darts at chest, front and back hem
- » Stylish, narrow cuffs with single button fastening



### 963M MEN'S SHORT SLEEVE TAILORED HERRINGBONE SHIRT FIT TAILORED • SIZES S-4XL

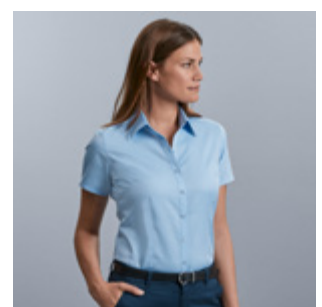
- » Easy Care
- » Longer fit
- » Narrow placket
- » No show through
- » Curved hem
- » Stiffened Kent boned collar



### 963F LADIES' SHORT SLEEVE TAILORED HERRINGBONE SHIRT FIT TAILORED • SIZES XS-4XL

- » Easy Care
- » Longer fit
- » Narrow placket
- » No show through
- » Curved hem
- » Neat modern collar

- » Darts at chest, front and back hem



## CREW-NECK KNITTED PULLOVER

717



EC Easy Care

### MATERIAL / WEIGHT

50% Cotton, 50% Acrylic CottonBlend  
275g/m<sup>2</sup>

### PACKING

Pack 1/ Carton 12

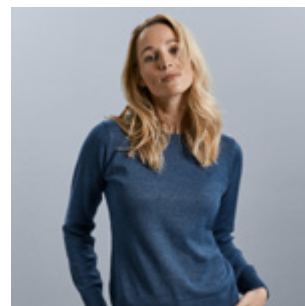
### 717M MEN'S CREW NECK KNITTED PULLOVER SIZES XXS-4XL

- » Classic Fit
- » Contemporary styling
- » Fully fashioned
- » Elastane on ribbed cuffs and waistband trim to retain shape and smart appearance
- » Quick to dry and Easy care



### 717F LADIES' CREW NECK KNITTED PULLOVER SIZES XXS-4XL

- » Classic Fit
- » Contemporary styling
- » Fully fashioned
- » Elastane on ribbed cuffs and waistband trim to retain shape and smart appearance
- » Quick to dry and Easy care



## V-NECK KNITTED PULLOVER

710



EC Easy Care

### MATERIAL / WEIGHT

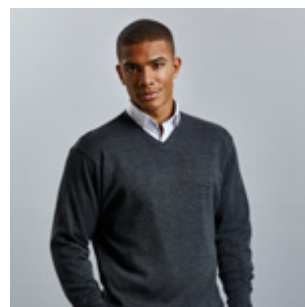
50% Cotton, 50% Acrylic CottonBlend  
275g/m<sup>2</sup>

### PACKING

Pack 1/ Carton 12

### 710M MEN'S V-NECK KNITTED PULLOVER SIZES XXS-4XL

- » Classic Fit
- » Contemporary styling
- » Fully fashioned
- » Elastane on ribbed cuffs and waistband trim to retain shape and smart appearance
- » Quick to dry and Easy care



### 710F LADIES' V-NECK KNITTED PULLOVER SIZES XXS-4XL

- » Classic Fit
- » Contemporary styling
- » Fully fashioned
- » Elastane on ribbed cuffs and waistband trim to retain shape and smart appearance
- » Quick to dry and Easy care



## V-NECK KNITTED CARDIGAN

715



EC Easy Care

### MATERIAL / WEIGHT

50% Cotton, 50% Acrylic CottonBlend  
275g/m<sup>2</sup>

### PACKING

Pack 1/ Carton 12

### 715M MEN'S V-NECK KNITTED CARDIGAN SIZES XXS-4XL

- » Classic Fit
- » Contemporary styling
- » Fully fashioned
- » Elastane on ribbed cuffs and waistband trim to retain shape and smart appearance

- » Quick to dry and Easy care
- » Dyed-to-match buttons



### 715F LADIES' V-NECK KNITTED CARDIGAN SIZES XXS-4XL

- » Classic Fit
- » Contemporary styling
- » Fully fashioned
- » Elastane on ribbed cuffs and waistband trim to retain shape and smart appearance

- » Quick to dry and Easy care
- » Dyed-to-match buttons



## V-NECK SLEEVELESS KNITTED PULLOVER & CARDIGAN

716 · 719



EC Easy Care

### MATERIAL / WEIGHT

50% Cotton, 50% Acrylic CottonBlend  
275g/m<sup>2</sup>

### PACKING

Pack 1/ Carton 12

### 716M V-NECK SLEEVELESS KNITTED PULLOVER SIZES XXS-4XL

- » Classic Fit
- » Contemporary styling
- » Fully fashioned
- » Elastane on ribbed cuffs and waistband trim to retain shape and smart appearance

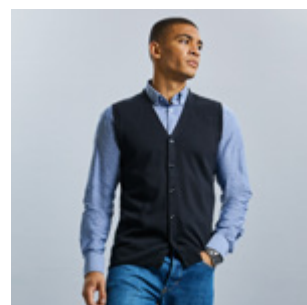
- » Refined button up fastening with inside facing and dyed-to-match buttons
- » Quick to dry and Easy care



### 719M MEN'S V-NECK SLEEVELESS KNITTED CARDIGAN SIZES XXS-4XL

- » Classic Fit
- » Contemporary styling
- » Fully fashioned
- » Elastane on ribbed cuffs and waistband trim to retain shape and smart appearance

- » Refined button up fastening with inside facing and dyed-to-match buttons
- » Quick to dry and Easy care



# MICROFLEECE

880 • 881

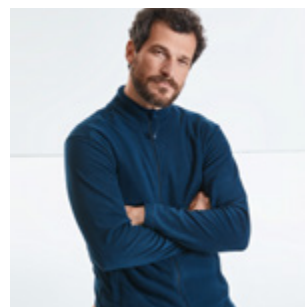


**MATERIAL / WEIGHT**  
100% Polyester Anti-Pill Microfleece  
190g/m<sup>2</sup>

**PACKING**  
Pack 3/ Carton 24

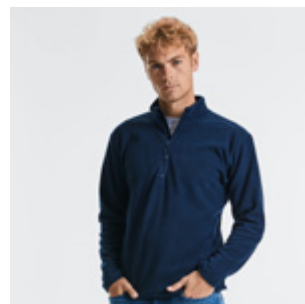
## 880M MEN'S FULL ZIP MICROFLEECE SIZES XS-2XL

- » Cadet collar with zip protector
- » Locker patch for personalisation
- » Side vents and side darts for a better fit and flexibility
- » Light weight high density fabric for a warm comfort
- » Zipped side pockets



## 881M MEN'S QUARTER ZIP MICROFLEECE SIZES S-2XL

- » Cadet collar with zip protector
- » Locker patch for personalisation
- » Side vents and side darts for a better fit and flexibility
- » Light weight high density fabric for a warm comfort



870B

## DIVERSITY & INCLUSION

We build on our core value of respect for people to create a culture where everyone feels they belong.



# OUTDOOR FLEECE

872 • 870 • 874



## MATERIAL / WEIGHT

100% Polyester Anti-Pill Fleece  
320g/m<sup>2</sup>

## PACKING

Pack 3/ Carton 24

### 872M MEN'S OUTDOOR FLEECE GILET SIZES XS-2XL

- » Cadet collar
- » Side pockets with inside-out zips and inner mesh lining
- » Cord pulls on all zips
- » Side panel construction for modern fit
- » Bungee cord in hem



### 870M MEN'S FULL ZIP OUTDOOR FLEECE SIZES XS-4XL

- » Cadet collar
- » Side pockets with inside-out zips and inner mesh lining
- » Cord pulls on all zips
- » Side panel construction for modern fit
- » Bungee cord in hem



### 870F LADIES' FULL ZIP OUTDOOR FLEECE SIZES XS-2XL

- » Cadet collar
- » Side pockets with inside-out zips and inner mesh lining
- » Cord pulls on all zips
- » Side panel construction for modern fit
- » Bungee cord in hem



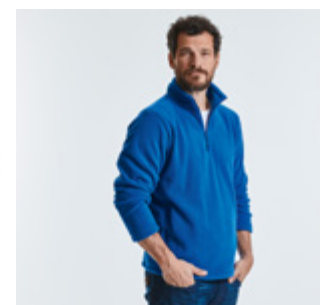
### 870B CHILDREN'S FULL ZIP OUTDOOR FLEECE SIZES 3-12 YEARS

- » Cadet collar
- » Side pockets with inside-out zips and inner mesh lining
- » Cord pulls on all zips
- » Side panel construction for modern fit
- » Bungee cord in hem
- » No drawcord in line with health and safety legislation



### 874M QUARTER ZIP OUTDOOR FLEECE SIZES XS-2XL

- » Cadet collar
- » Side pockets with inside-out zips and inner mesh lining
- » Cord pulls on all zips
- » Side panel construction for modern fit
- » Bungee cord in hem



## CROSS JACKET

430



Breathable  
up to 2000g/m<sup>2</sup> per 24 hours

### MATERIAL / WEIGHT

100% Polyester  
125g/m<sup>2</sup>

### PACKING

Pack 1/ Carton 12

Windproof

### 430M MEN'S CROSS JACKET SIZES S-4XL

- » Contemporary shaped fit
- » High performance DWR fabric treated with Aquapel™ by Nanotex®
- » Fluorine and PFC free
- » Eco-efficient padding by Dupont™ Sorona®

- » Stand up collar with 2 snap fastener and inner storm flap to ward off wind and draught
- » Zipped inside pocket
- » Decorative sleeve flap with snap fastener
- » Discreet decoration access at inner left chest



36 FN

### 430F LADIES' CROSS JACKET SIZES XS-3XL

- » Contemporary shaped fit
- » High performance DWR fabric treated with Aquapel™ by Nanotex®
- » Fluorine and PFC free
- » Eco-efficient padding by Dupont™ Sorona®

- » Stand up collar with 2 snap fastener and inner storm flap to ward off wind and draught
- » Zipped inside pocket
- » Decorative sleeve flap with snap fastener
- » Discreet decoration access at inner left chest



36 FN

## HOODED NANO JACKET & BODYWARMER

440 • 441



Breathable  
up to 2000g/m<sup>2</sup> per 24 hours

### MATERIAL / WEIGHT

100% Polyester  
66g/m<sup>2</sup>

### PACKING

Pack 1/ Carton 12

Windproof

### 440M MEN'S HOODED NANO JACKET SIZES S-4XL

- » High performance DWR fabric treated with Aquapel™ by Nanotex®
- » Fluorine and PFC free
- » Eco-efficient padding by Dupont™ Sorona®
- » Contrasting zips, lining and accents for a refined look

- » Discreet decoration access at inner left chest
- » Stretch binding at sleeves and hem
- » Adjustable 3-parted removable hood

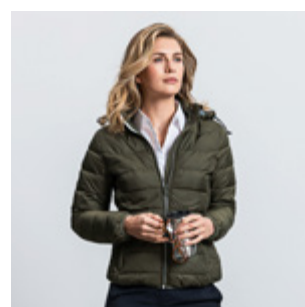


36 IR DO FN

### 440F LADIES' HOODED NANO JACKET SIZES XS-3XL

- » High performance DWR fabric treated with Aquapel™ by Nanotex®
- » Fluorine and PFC free
- » Eco-efficient padding by Dupont™ Sorona®
- » Contrasting zips, lining and accents for a refined look

- » Discreet decoration access at inner left chest
- » Stretch binding at sleeves and hem
- » Adjustable 3-parted removable hood



36 IR DO FN



**441M MEN'S NANO BODYWARMER**  
SIZES **S-4XL**

- » High performance DWR fabric treated with Aquapel™ by Nanotex®
  - » Fluorine and PFC free
  - » Eco-efficient padding by Dupont™ Sorona®
  - » Contrasting zips, lining and accents for a refined look
- » Discreet decoration access at inner left chest
  - » Adjustable hem with bungee cord



**441F LADIES' NANO BODYWARMER**  
SIZES **XS-3XL**

- » High performance DWR fabric treated with Aquapel™ by Nanotex®
  - » Fluorine and PFC free
  - » Eco-efficient padding by Dupont™ Sorona®
  - » Contrasting zips, lining and accents for a refined look
- » Discreet decoration access at inner left chest
  - » Adjustable hem with bungee cord



# SUSTAINABLE SOURCING

Sorona® is 37% plant based.



440M • 440F



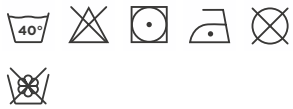
430F • 430M



440F

# BIONIC SOFTSHELL JACKET

410



Breathable  
up to 5000g/m<sup>2</sup> per 24 hours

Windproof

Waterproof material  
up to 5000mm

## MATERIAL / WEIGHT

94% Polyester, 6% Elastane treated with Bionic-Finish® Eco (3 layer softshell jacket) 320g/m<sup>2</sup>

## PACKING

Pack 1/ Carton 12

### 410M MEN'S BIONIC SOFTSHELL JACKET SIZES XS-4XL

- » High performance DWR fabric with hydrophobic membrane
- » Treated with Bionic-Finish® Eco
- » Fluorine and PFC free
- » Contrasting zips and accents for a refined look
- » High moisture vapour transfer with hydroshell air panels at armpits for enhanced movement and breathability



### 410F LADIES' BIONIC SOFTSHELL JACKET SIZES XS-4XL

- » High performance DWR fabric with hydrophobic membrane
- » Treated with Bionic-Finish® Eco
- » Fluorine and PFC free
- » Contrasting zips and accents for a refined look
- » High moisture vapour transfer with hydroshell air panels at armpits for enhanced movement and breathability



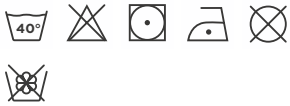
410M • 410F



410F

# SOFTSHELL JACKET & GILET

140 • 141



Breathable

Windproof

Waterproof material up to 5000mm

## MATERIAL / WEIGHT

92% Polyester, 8% Elastane  
(3 layer Softshell fabric)  
340g/m<sup>2</sup>

## PACKING

Pack 1/ Carton 12

### 140M MEN'S SOFTSHELL JACKET SIZES XS-4XL

- » Three layers softshell material
- » Side pockets and chest pocket with inner lining, inside-out zippers and cord pulls
- » Full zip with inner storm flap and zip neck protector at collar
- » Drop tail
- » Bungee cord in hem
- » Adjustable cuffs

3XL & 4XL only available in Black, Classic Red, French Navy, Titanium, Bottle Green



### 140F LADIES' SOFTSHELL JACKET SIZES XS-4XL

- » Three layers softshell material
- » Side pockets and chest pocket with inner lining, inside-out zippers and cord pulls
- » Full zip with inner storm flap and zip neck protector at collar
- » Drop tail
- » Bungee cord in hem
- » Adjustable cuffs
- » Feminine Fit

3XL & 4XL only available in Black, Classic Red, French Navy, Titanium, Bottle Green



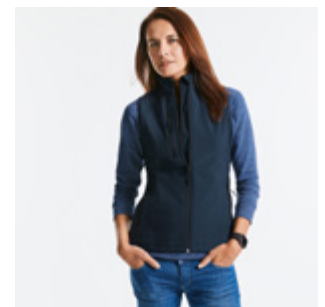
### 141M MEN'S SOFTSHELL GILET SIZES XS-2XL

- » Three layers softshell material
- » Side pockets and chest pocket with inner lining, inside-out zippers and cord pulls
- » Full zip with inner storm flap and zip neck protector at collar
- » Drop tail
- » Bungee cord in hem
- » Adjustable cuffs



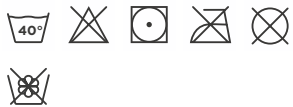
### 141F LADIES' SOFTSHELL GILET SIZES XS-2XL

- » Three layers softshell material
- » Side pockets and chest pocket with inner lining, inside-out zippers and cord pulls
- » Full zip with inner storm flap and zip neck protector at collar
- » Drop tail
- » Bungee cord in hem
- » Adjustable cuffs
- » Feminine Fit



# SMART SOFTSHELL JACKET & GILET

040 • 041



## MATERIAL / WEIGHT

100% Polyester Knitted Softshell Outer Layer,  
Bonded Microfleece Inner Layer  
315g/m<sup>2</sup>

## PACKING

Pack 1/ Carton 12

### 040M MEN'S SMART SOFTSHELL JACKET SIZES XS-3XL

- » Durable Water Repellent Du Pont™ Teflon® Coating
- » Two layer softshell material without membrane
- » 2 zipped pockets
- » Inside-out zippers
- » Cadet collar
- » Drop tail
- » Protection against wind and chill
- » Higher degree of breathability
- » Microfleece lining
- » Back neck tape
- » Bound inside seams on zip
- » Headphone access



### 040F LADIES' SMART SOFTSHELL JACKET SIZES XS-3XL

- » Durable Water Repellent Du Pont™ Teflon® Coating
- » Two layer softshell material without membrane
- » 2 zipped pockets
- » Inside-out zippers
- » Cadet collar
- » Drop tail
- » Protection against wind and chill
- » Higher degree of breathability
- » Microfleece lining
- » Back neck tape
- » Bound inside seams on zip
- » Headphone access



### 041M MEN'S SMART SOFTSHELL GILET SIZES XS-3XL

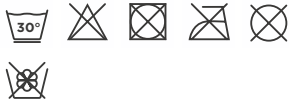
- » Durable Water Repellent Du Pont™ Teflon® Coating
- » Two layer softshell material without membrane
- » 2 zipped pockets
- » Inside-out zippers
- » Cadet collar
- » Drop tail
- » Protection against wind and chill
- » Higher degree of breathability
- » Microfleece lining
- » Back neck tape
- » Bound inside seams on zip
- » Headphone access



041M

## SPORTSHELL 5000 JACKET

520



- Breathable up to 5000g/m<sup>2</sup> per 24 hours
- Windproof
- Waterproof material up to 5000mm

### MATERIAL / WEIGHT

100% polyester outer, 100% polyester mesh, Advanced Softshell Fabric with Natural Stretch (3 layer bonded hydrophobic substrate) 250g/m<sup>2</sup>

### PACKING

Pack 1/ Carton 12

### 520M MEN'S SPORTSHELL 5000 JACKET SIZES XS-2XL

- » Designed for active living: laser cut pockets with matt waterproof zips on sleeve and chest
- » Adjustable cuffs for comfort and maintenance of personal microclimate; YKK centre zipper
- » Ergonomic shape - body fit creates microclimate for maximum thermoregulation and moisture transfer
- » Discreet decoration access at inner left chest



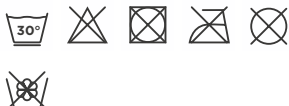
### 520F LADIES' SPORTSHELL 5000 JACKET SIZES XS-2XL

- » Designed for active living: laser cut pockets with matt waterproof zips on sleeve and chest
- » Adjustable cuffs for comfort and maintenance of personal microclimate; YKK centre zipper
- » Ergonomic shape - body fit creates microclimate for maximum thermoregulation and moisture transfer
- » Discreet decoration access at inner left chest



## HYDRAPLUS 2000 JACKET

510



- Breathable up to 2000g/m<sup>2</sup> per 24 hours
- Windproof
- Waterproof material up to 2000mm

### MATERIAL / WEIGHT

100% Nylon Taslan 190g/m<sup>2</sup>

### PACKING

Pack 1/ Carton 12

### 510M MEN'S HYDRAPLUS 2000 JACKET SIZES XS-4XL

- » Active fit with articulated elbows and raglan sleeves
- » Inside-out YKK front zipper with cord pull; double storm flap with additional hook and loop fastener closure
- » Stowaway 3 piece hood and microfleece inner collar
- » Fully lined, with discreet concealed decoration access at hem, bungee cord in hem

3XL & 4XL only available in Black, Classic Red, French Navy and Titanium



### 510F LADIES' HYDRAPLUS 2000 JACKET SIZES XS-4XL

- » Active fit with articulated elbows and raglan sleeves
- » Inside-out YKK front zipper with cord pull; double storm flap with additional hook and loop fastener closure
- » Stowaway 3 piece hood and microfleece inner collar
- » Fully lined, with discreet concealed decoration access at hem, bungee cord in hem

3XL & 4XL only available in Black, Classic Red, French Navy and Titanium



# HEAVY DUTY WORKWEAR T

010



## MATERIAL / WEIGHT

100% Combed Ringspun Cotton  
Light Oxford: 93% Cotton, 7% Viscose  
180g/m<sup>2</sup>

## PACKING

Pack 3/Carton 36

### 010M HEAVY DUTY WORKWEAR T SIZES XS-4XL

- » Classic Fit
- » Single Jersey
- » Double layered shoulder panels and reinforced twin needle stitching at armhole
- » 1x1 rib knit collar with top stitch
- » Double layer yoke, perfect for decoration
- » Enzyme washed ringspun cotton for a softer feel and added comfort



# HEAVY DUTY COLLAR & CREW NECK WORKWEAR SWEATSHIRTS

012 • 013



## MATERIAL / WEIGHT

80% Combed Ringspun Cotton, 20% Polyester  
300g/m<sup>2</sup>

## PACKING

Pack 3/Carton 24

### 012M HEAVY DUTY WORKWEAR COLLAR SWEATSHIRT SIZES XS-4XL

- » SpotShield™ stain resistant coating
- » Double layered shoulder panels for superior comfort and stability
- » Locker patch for personalisation
- » Elasticated pen holder on top sleeve
- » Plastic-coated metal buttons
- » Drop tail and compact 1x1 ribbed hem for perfect bottom fit and protection against wind and chill
- » Side darts for better fit and flexibility



### 013M HEAVY DUTY WORKWEAR SWEATSHIRT SIZES XS-4XL

- » SpotShield™ stain resistant coating
- » Double layered shoulder panels for superior comfort and stability
- » Locker patch for personalisation
- » Elasticated pen holder on top sleeve
- » Drop tail and compact 1x1 ribbed hem for perfect bottom fit and protection against wind and chill
- » Side darts for better fit and flexibility



# WORKWEAR POLYCOTTON TWILL TROUSERS & SHORTS

001 • 002



 Teflon® is a registered trademark of Du Pont used under license by INVISTA and its affiliates.

**MATERIAL / WEIGHT**  
65% Polyester, 35% Cotton Twill  
245g/m<sup>2</sup>

**PACKING**  
Pack 1/ Carton 12

## 001M WORKWEAR POLYCOTTON TWILL TROUSERS

- » 2 back pockets with flaps
- » Cargo pocket on right leg
- » Small extra pocket below waistband
- » Expandable waistband for comfortable fit

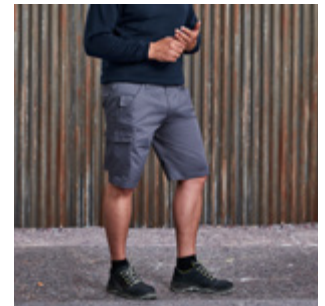
**SIZES**  
**WAIST SIZES**  
UK (inches): 28/30/32/34/36/38/40/42/44/46/48  
Europe: 44/46/48/50/52/54/56/58/60/62/64  
**LEG LENGTH**  
Ins R32/L:34,  
cm R81/L:86



## 002M WORKWEAR POLYCOTTON TWILL SHORTS

- » 2 back pockets with flaps
- » Cargo pocket on right leg
- » Small extra pocket below waistband
- » Expandable waistband for comfortable fit

**SIZES**  
**WAIST SIZES**  
UK (inches): 28/30/32/34/36/38/40/42/44/46/48  
Europe: 44/46/48/50/52/54/56/58/60/62/64



# HEAVY DUTY WORKWEAR TROUSERS

015



 Teflon® is a registered trademark of Du Pont used under license by INVISTA and its affiliates.

**MATERIAL / WEIGHT**  
65% Polyester, 35% Cotton Hardwearing Canvas  
260g/m<sup>2</sup>

**PACKING**  
Pack 1/ Carton 12

## 015M HEAVY DUTY WORKWEAR TROUSERS

- » Teflon® fabric protector
- » 2 back pockets, one open, one with flap and hook and loop fastener
- » Cargo pockets on both legs, with practical compartments on right leg
- » Small extra pocket below waistband
- » Triple stitched inner leg seams and pocket openings triple, reinforced seat area
- » Internal pockets for knee pads (21cm x 15cm max.)
- » YKK zipper



**SIZES**  
**WAIST SIZES**  
UK (inches): 28/30/32/34/36/38/40/42/44/46/48  
Europe: 44/46/48/50/52/54/56/58/60/62/64

**LEG LENGTH**  
Ins S:30/R32/L:34  
cm S:76/R81/L:86

# HEAVY DUTY WORKWEAR GILET

014



Teflon® is a registered trademark of Du Pont used under license by INVISTA and its affiliates.

## MATERIAL / WEIGHT

65% Polyester, 35% Cotton Hardwearing Canvas with 5oz Polyester Wadding, 100% Polyester Inner Lining  
260g/m<sup>2</sup>

## PACKING

Pack 1/ Carton 12

### 014M HEAVY DUTY WORKWEAR GILET SIZES XS-4XL

- » Teflon® fabric protector
- » Full zip with stormflap, flexi notch at neck
- » Drop Tail, elasticated gusset at armhole, reinforced hang tag
- » Right hand side chest pocket with functional multi compartments
- » Spacious, discreet zipped decoration access at left chest



014M



# HEAVY DUTY WORKWEAR SOFTSHELL JACKET

018



Breathable  
up to 5000g/m<sup>2</sup> per 24 hours

Windproof

Waterproof  
material up to 5000mm

## MATERIAL / WEIGHT

96% polyester/4% elastane durable outer fabric with abrasion resistant textured finish, breathable, waterproof membrane, bonded microfleece lining (100%polyester with grid texture)  
400g/m<sup>2</sup>

## PACKING

Pack 1/ Carton 12

## 018M HEAVY DUTY WORKWEAR SOFTSHELL JACKET SIZES XS-4XL

- » Teflon® water repellent
- » 2 deep, zipped front pockets
- » Sturdy YKK vision front zipper with pull cord, inner storm flap and zip guard at collar
- » Black contrast panels on shoulders, elbows and back of hem
- » Ergonomic fit with articulated elbows
- » Cuffs with internal stretch insert for weather protection and comfortable fit



36

CG



018M • 014M • 014M

# SIZE GUIDE

All of our measurements are based on actual “to fit” body sizes rather than the size of the garment itself.

For example, a polo shirt with a chest to fit size of 92-97cm / 36-38” will fit someone with this chest measurement; trousers with a waist to fit 50 Europe / 34”, will fit a person with this measurement.

**HERE ARE SOME TIPS TO HELP YOU CHOOSE THE MOST APPROPRIATE GARMENT SIZE(S):**

1

## CHEST

**Men:** Measure around the fullest part of the chest, 2.5cm below the underarm.

**Women:** Measure around the fullest part of the bust.

2

## COLLAR

**Men:** Measure around the base of the neck.

3

## WAIST

**All:** Measure around the natural waist, keeping the measuring tape taut.

4

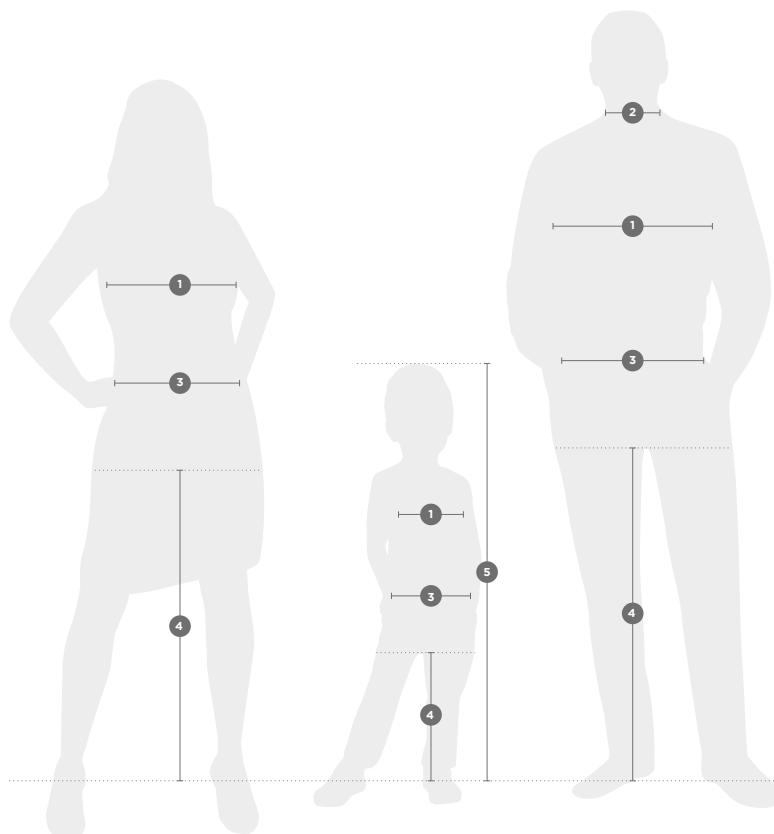
## HEIGHT

**Children:** Standing still with feet together and flat on the floor, measure from the top of the head to the ground.

5

## LEG LENGTH

**All:** Measure from the top of the inside leg at the crotch down to where the trousers are normally worn with shoes.



## ALL PRODUCTS (excluding shirts, trousers, shorts & sweat pants)

LADIES'	XXS	XS	S	M	L	XL	2XL	3XL	4XL	5XL	6XL
DRESS SIZE											
UK	6	8	10	12	14	16	18	20	22	24	26
FRANCE	34	36	38	40	42	44	46	48	50	52	54
ITALY	38	40	42	44	46	48	50	52	54	56	58
GERMANY/EUROPE	32	34	36	38	40	42	44	46	48	50	52
CHEST TO FIT (CM)	72-77	77-82	82-87	87-92	92-97	97-102	102-107	107-112	112-117	117-122	122-127
CHEST TO FIT (INS)	28-30	30-32	32-34	34-36	36-38	38-40	40-42	42-44	44-46	46-48	48-50
MEN'S	XXS	XS	S	M	L	XL	2XL	3XL	4XL	5XL	6XL
DRESS SIZE											
GERMANY/EUROPE	44	46	48	50	52	54-56	56-58	58-60	62-64	66-68	70-72
CHEST TO FIT (CM)	82-87	87-92	92-97	97-102	102-107	107-112	112-117	117-122	122-127	127-132	132-137
CHEST TO FIT (INS)	32-34	34-36	36-38	38-40	40-42	42-44	44-46	46-48	48-50	50-52	52-54

## SHIRTS

LADIES'	XXS	XS	S	M	L	XL	2XL	3XL	4XL	5XL	6XL
DRESS SIZE											
UK	6	8	10	12	14	16	18	20	22	24	26
FRANCE	34	36	38	40	42	44	46	48	50	52	54
ITALY	38	40	42	44	46	48	50	52	54	56	58
GERMANY/EUROPE	32	34	36	38	40	42	44	46	48	50	52
CHEST TO FIT (CM)	72-77	77-82	82-87	87-92	92-97	97-104	104-112	112-120	120-130	130-137	137-144
CHEST TO FIT (INS)	28-30	30-32	32-34	34-36	36-38	38-41	41-44	44-47	47-51	51-54	54-57
MEN'S	XXS	XS	S	M	L	XL	2XL	3XL	4XL	5XL	6XL
DRESS SIZE											
COLLAR TO FIT (CM)			37-38	39-40	41-42	43-44	45-46	47-48	49-50	51-52	53-54
DUAL COLLAR SIZES (INS)			14.5/15	15.5	16/16.5	17/17.5	18	18.5/19	19.5	20	21
INDIVIDUAL COLLAR SIZES (INS)			14.5   15	15.5	16   16.5	17   17.5	18	18.5   19	19.5	20	21
CHEST TO FIT (CM)			92-97	97-102	102-107	107-112	112-117	117-122	122-127	127-132	132-137
CHEST TO FIT (INS)			36-38	38-40	40-42	42-44	44-46	46-48	48-50	50-52	52-54

## TROUSERS

UK (INS)	28	30	32	34	36	38	40	42	44	46	48
EUROPE	44	46	48	50	52	54	56	58	60	62	64

	SHORT	REGULAR	LONG
LEG LENGTH (CM)	76	81	86
LEG LENGTH (INS)	30	32	34

## SWEAT PANTS

LADIES'	XS	S	M	L	XL
DRESS SIZE					
UK	8	10	12	14	16
WAIST TO FIT (CM)	63.5	68.5	74	79	84
WAIST TO FIT (INS)	25	27	29	31	33

MEN'S	XS	S	M	L	XL	2XL	3XL
DRESS SIZE							
WAIST TO FIT (CM)	71	76	81	86.5	91.5	96.5	101.5
WAIST TO FIT (INS)	28	30	32	34	36	38	40

## ALL CHILDREN'S PRODUCTS (excluding sweat pants)

AGES (YEARS)	1-2	3-4	5-6	7-8	9-10	11-12	13-14	15-16
HEIGHT (CM)	90	104	116	128	140	152	164	176
CHEST TO FIT (CM)	51-56	56-63	63-71	71-76	76-81	81-86	86-91	91-96
CHEST TO FIT (INS)	20-22	22-25	25-28	28-30	30-32	32-34	34-36	36-38

## SWEAT PANTS (children)

AGES (YEARS)	3-4	5-6	7-8	9-10	11-12
HEIGHT (CM)	104	116	128	140	152
WAIST TO FIT (CM)	47	50	53	56	62
WAIST TO FIT (INS)	18.5	20	21	22	24.5

# CUFF STYLES & COLLARS



## ROUNDED EDGE CUFFS

Adjustable with 2 buttons.



## KENT

Perfect for business, this classic collar is named after the Duke of Kent.



## SQUARE EDGE CUFFS

Adjustable with 2 buttons.



## NEW KENT

Not as wide-flared as the Cutaway or as sharp-cut as the Kent collar, this modern style is stiffened, boned and suitable for embroidery.



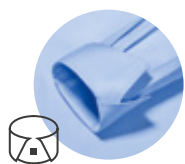
## MITRED EDGE CUFFS

Adjustable with 2 buttons.



## BUTTON DOWN

The modern sporty buttoned-down collar gives a smart appearance without a tie.



## COCKTAIL CUFFS

These can be worn either turned or not turned, for a stylish look.



## UNDER BUTTON DOWN

This type of collar is ideal for wearing without a tie and with an open collar button.



## CUFF LINKS

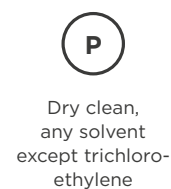
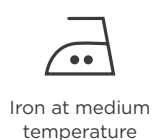
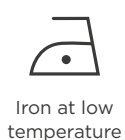
Many shirts offer the option to wear cuff links.



## LADIES

Our Ladies' Shirts feature a classic collar distinguished in style by its length and shape.

# CARE SYMBOLS



# FEATURES & FUNCTIONS



## BREATHABLE

A material's breathability is measured in terms of how many grams of water vapour pass through a square meter of fabric over 24 hours (g/m<sup>2</sup>/24h). The higher the value, the more breathable the product.



## WATERPROOF

The water column test indicates how many millimetres of water a fabric can withstand before the pressure causes it to leak. Measurements above 1,500 mm are considered waterproof.



## EASY CARE

A special finish ensures that the shirts and blouses are easier and quicker to iron.



## SPOT SHIELD™

Fabrics with a SpotShield™ finish are resistant to water and dirt. They even repel most oils without difficulty.



## COOLMAX®

COOLMAX® features outstanding moisture-regulating properties. This innovative, breathable polyester fibre wicks away moisture extremely quickly through capillary action and keeps the body drier longer.



## BIONIC-FINISH® ECO

The fluorine- and PFC-free finish prevents water and dirt from sticking to the material.



## LYCRA®

Lycra® is a brand name from the company Invista. It is an extremely stretchy elastane fibre with outstanding rebound properties. These textiles promise an improved fit and comfort to match.



## LYCRA® T400®

This elastomultiester (LYCRA® T400®) is a modern double fibre material that can be stretched in all directions and then bounces back to its original shape. The high-quality material adapts to the movements of the wearer and always retains its shape.



## TEFLON® (DUPONT™)

Teflon® coatings ensure that fabrics are resistant to water, oil and dirt. What's more, this does not have any negative impact on the weight, look, colour or breathability.



## AQUAPEL™ BY NANOTEX®

Developed in order to offer reliable protection against wind and water, Aquapel™ is still breathable and at the same time features environmentally friendly fluorine- and PFC-free technology.



## DUPONT™ SORONA®

The sustainable insulation with renewable plant-based materials is made with reduced energy consumption and 50% less greenhouse gas emissions.



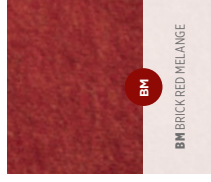
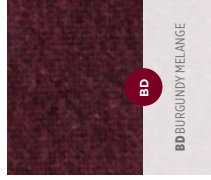
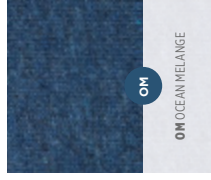
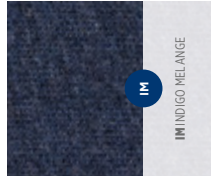
## FLUOR- AND PFC-FREE

Fluorine- and PFC-free materials are more degradable, for the good of both us and the environment.

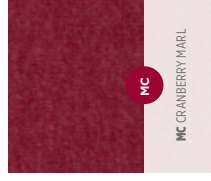
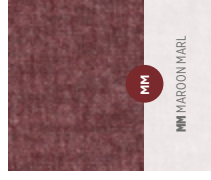
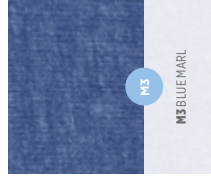
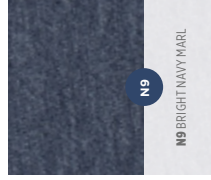
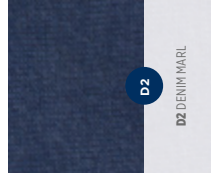
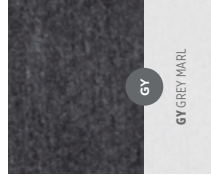
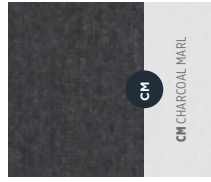
# COLOUR PALETTE

 <p>CD CD CANDY PINK</p>	 <p>PD PD PURE GOLD</p>	 <p>38 38 BOTTLE GREEN</p>	 <p>CP CP CORPORATE BLUE</p>	 <p>30 30 WHITE</p>
 <p>57 57 FUCHSIA</p>	 <p>K2 K2 YELLOW</p>	 <p>AL AL APPLE</p>	 <p>ZT ZT AZTEC BLUE</p>	 <p>36 36 BLACK</p>
 <p>81 81 PURPLE</p>	 <p>LM LM LIME</p>	 <p>WL WL WINTER EMERALD</p>	 <p>ZU ZU AZURE BLUE</p>	 <p>XW XW ZINC</p>
 <p>PT PT PORT</p>	 <p>BK BKSTONE</p>	 <p>AG AG AQUA</p>	 <p>BH BH BRIGHT ROYAL</p>	 <p>TT TTITANIUM</p>
 <p>41 41 BURGUNDY</p>	 <p>60 60 NATURAL</p>	 <p>BZ BZ BRIGHT SKY</p>	 <p>NB NB BRIGHT NAVY</p>	 <p>IR IR IRON GREY</p>
 <p>CR CR CLASSIC RED</p>	 <p>3M 3M KHAKI</p>	 <p>42 42 LIGHT BLUE</p>	 <p>FN FN FRENCH NAVY</p>	 <p>CG CG CONVIVY GREY</p>
 <p>BR BR BRIGHT RED</p>	 <p>CQ CQ CHOCOLATE</p>	 <p>OD OD OXFORD BLUE</p>	 <p>65 65 TURQUOISE</p>	 <p>SJ SJ SILVER</p>
 <p>44 44 ORANGE</p>	 <p>DO DO DARK OLIVE</p>	 <p>SC SC SKY</p>		 <p>LX LX LIGHT OXFORD</p>

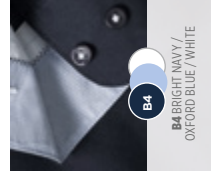
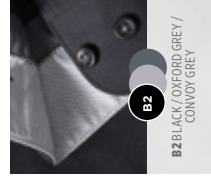
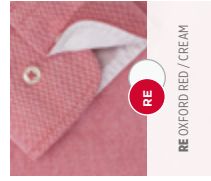
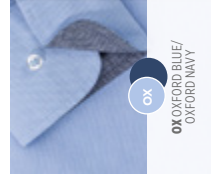
## MELANGE



## MARL



## CONTRAST



We offer a wide range of colours. For the exact colour details visit [russelleurope.com](http://russelleurope.com)

**WE  THE ORIGINAL.**  
EST. 1902

[www.blancpromotietextiel.com](http://www.blancpromotietextiel.com)