

# LOOKBOOK 2023

**blanc**  
PROMOTIE TEXTIEL



  
**Stedman**<sup>®</sup>  
collection

stedman.eu

## About Us

*Since 1953, the Stedman® brand has stood for reliable product quality, excellent value for money and ethically responsible manufacturing conditions.*



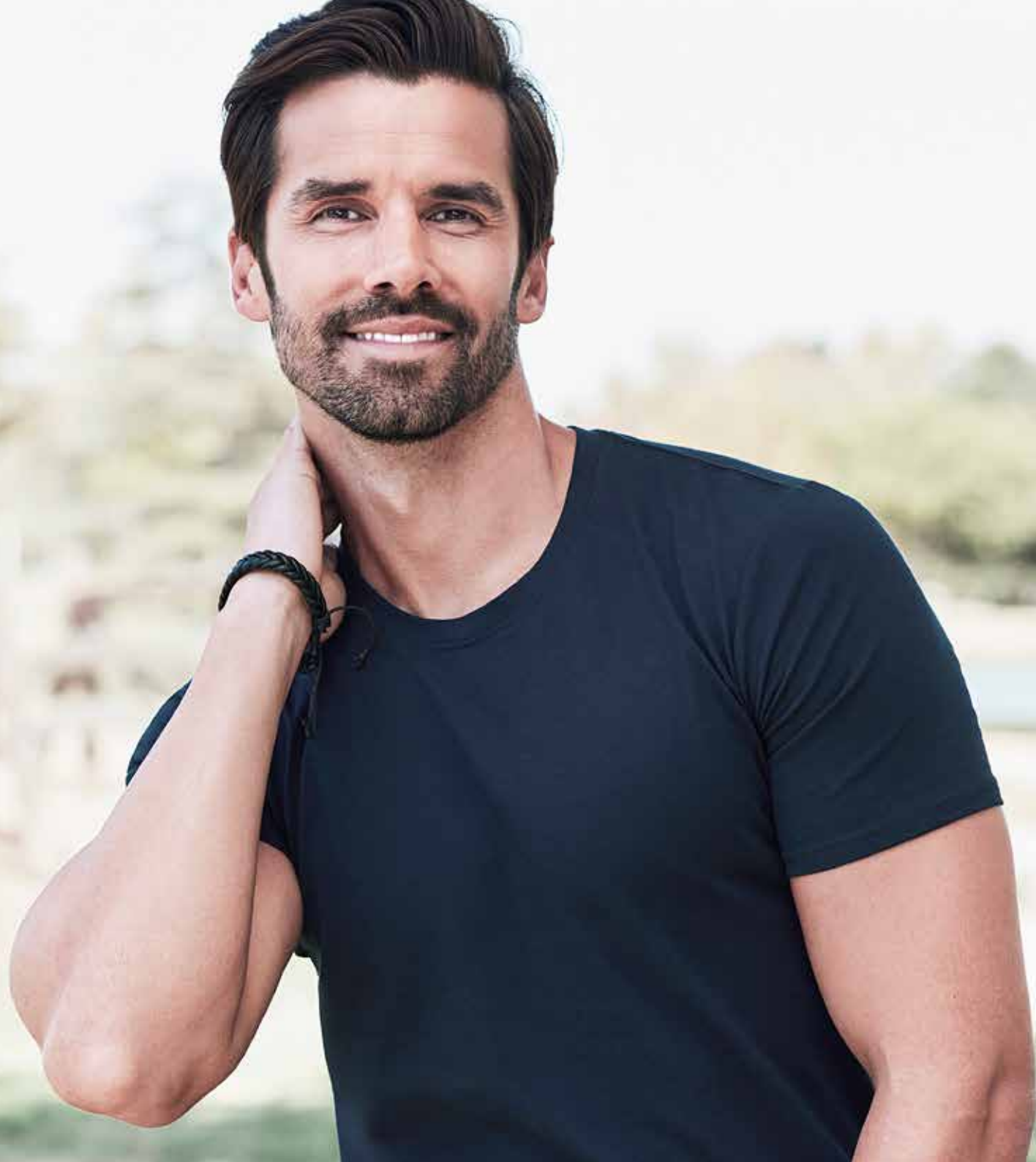
Classic-T Fitted  
for women, p. 25



*Our **2023 collection** includes a wide range of products for men, women and children, from basic T-shirts and sweatshirts in popular colours to functional sports and versatile outdoor clothing.*

*This year's highlights include our **brand-new Clive & Claire polo shirts** and the expansion of our Lux range into **Lux Softshell Jackets, Lux Padded Jackets & Lux Padded Vests!***

*Find out more on pages 10 - 19.*



Clive Crew Neck  
*for men, p. 34*

stedman.eu  
**Content**

*Welcome to our Stedman® lookbook 2023.  
 Discover new styles and popular bestsellers as well as  
 discounted styles in our “last chance” section.*

History	6 - 7
Ethics & Quality	8 - 9
New Styles	10 - 19
T-shirts & More	20 - 63
Polo Shirts	64 - 73
Sweats	74 - 85
Sports	86 - 111
Fleece	112 - 121
Jackets	122 - 129
Last Chance	130 - 137
Fabrics	138 - 139
Colours	140 - 141
Sizes	142 - 143
Print & Embroidery	144 - 145
Index	146 - 147



**Claire Crew Neck**  
 for women, p. 34

[stedman.eu/history](https://stedman.eu/history)

## History

*Today Stedman® is an independent company providing top-quality promotional clothing at attractive prices. Based in Aachen, Germany, and with warehouses in Ghent, Belgium, and Zagreb, Croatia, Stedman® enjoys a strong market presence in 40 countries.*

# 1930

Asheboro, North Carolina, USA: Stedman® begins its textile business with cotton handkerchiefs in 1930.

# 1939

In 1939, the handkerchief operation is restructured during World War II to manufacture T-shirts for the United States Navy.

# 1950

In 1950 we are producing a full line of lightweight underwear for men and boys.

# 1953

A knit sportswear line is introduced in 1953. These T-shirts are made of durable yet soft and comfortable combed cotton.

With two plants in production, and employing approximately 200 people, our company grows into one of the best-known manufacturers of men's quality T-shirts in the country.

# 1968

In 1968 we own six production plants. Stedman® is a serious underwear and sportswear firm.

# 1970

Two years later Stedman® products are distributed from coast to coast and around the world.

World-wide sales of Stedman® underwear and sportswear products are handled in the Stedman® New York office.

Operating warehouses are located in Asheboro, Texas, Oakland, Los Angeles and Honolulu.

# 1980

The Stedman Manufacturing Company is a tremendous success.

At the age of 60 William David Stedman decides to retire and sell his textile firm to the Sara Lee Corporation in 1980.

# 2001

Four basic products are introduced at the European market launch in Paris on September 18, 2001: Classic-T, Junior Classic-T, Comfort-T and Polo.

We are proud to say that these styles are still considered best-sellers in our collection to this day. Our product portfolio grows quickly as awareness of the brand increases.

# 2006

In 2006 Sara Lee sells its branded apparel business to its former subsidiary Hanesbrands.

Hanesbrands decides to pull their brand Hanes® out of the European markets in 2014 but Stedman® remains in Europe.

# 2023

The current collection comprises 120 styles for men, women, children and toddlers: from T-shirts, polo shirts, sweatshirts and jackets up to fashionable sportswear.

[stedman.eu/sustainability](https://stedman.eu/sustainability)

## Ethics & Quality

*With Stedman® you choose our experience and our customer service but more importantly you choose our core values: quality, ethics, eco-friendliness and responsible manufacturing.*

### OEKO-TEX® STANDARD 100

Our textile articles and components have been tested for harmful substances and are therefore harmless for human health, assuring high product safety.

### ORGANIC CONTENT STANDARD

Our organic styles are made of 100% OCS-certified organic ring-spun cotton; certified by Control Union Certifications (CU 819645).

### AMFORI

Member of amfori, the leading global business association for open and sustainable trade. We improve the social performance of our supply chain via amfori BSCI.

### PETA - APPROVED VEGAN

We do not use animal products. Our clothing & accessories are made of vegan alternatives to animal-derived materials such as leather, fur, silk, feathers, or bone.

### RECYCLED MATERIAL

Our sustainable polyester made from recycled plastic bottles offers high-quality characteristics but with a smaller environmental footprint, keeping plastics from going to landfills and our oceans.

### STEDMAN® PROOFED QUALITY

All our articles are subject to strict quality controls. With our own quality management team on site, we ensure that our high demands on material and product properties are always met.





Sweatshirt Select  
for men, p. 77



NEW STYLE



[stedman.eu/news](https://stedman.eu/news)

## Clive & Claire Polo

Our new Clive & Claire polo shirts are made of a super stretchy combed cotton and elastane blend. The high-quality cotton piqué creates a robust yet soft waffle-like structure. Modern rib cuffs, 3 tone-on-tone buttons and side seams with slits make these polo shirts a beautiful addition to our popular “Clive & Claire” range.

Find Clive Polo (ST9640) and Claire Polo (ST9740) on page 66.



*For more information on our  
new styles and colours  
please visit our website:*

[stedman.eu/news](https://stedman.eu/news)



NEW STYLE



stedman.eu

## Lux T-shirts

Last year's newcomers, Stedman® Lux and Lux Fitted, have gained popularity in no time. One of the reasons for their success are the heathered colours made of 100% cotton. By making the entire range from natural fibres we offer an eco-friendlier alternative to comparable styles with conventional cotton-viscose blends in heathered fabrics. This guarantees a homogenous surface for print applications.

Find Lux for men & women (ST7000) and Lux Fitted for women (ST7600) on pages 22 - 23.



[stedman.eu/news](https://stedman.eu/news)

## Lux Jackets & Vests

The Lux range is expanding! Due to popular demand we are adding on to our premium Lux range in 2023! Please welcome Lux Softshell Jackets, Lux Padded Jackets and Lux Padded Vests to the new Stedman® collection!



*For more information on our new styles and colours please visit our website:*

[stedman.eu/news](https://stedman.eu/news)



NEW STYLE

## Lux Softshell Jackets

Our new Lux Softshell Jackets keep you cosy and dry with their functional 3-layer fabric: soft and warm micro fleece on the inside, a breathable membrane in the middle and a water-repellent knitted softshell layer for a modern look. They come with a detachable, adjustable hood and inside pocket. The half-moon in the back centre is great for customisation.

Find Lux Softshell Jacket for men (ST5440) and Lux Softshell Jacket for women (ST5540) on page 124.



## Lux Padded Jackets

Our new Lux Padded Jackets can be taken anywhere due to their stow-away function. They fold down super easily into their own inside pocket. The adjustable bottom hem and hood with collar offer optimal warmth. The front left panel is easily accessible from the inside for embroidery. The half-moon in the back centre is great for customisation as well.

Find Lux Padded Jacket for men (ST5420) and Lux Padded Jacket for women (ST5520) on page 126.



NEW STYLE



## Lux Padded Vests

Our new Lux Padded Vests are great for any outdoor activity. Just like the Lux Padded Jackets, they fold down into their own inside pocket. The adjustable bottom hem and stand-up collar offer optimal warmth. The front left panel is easily accessible from the inside for embroidery. The half-moon in the back centre is great for customisation as well.

Find Lux Padded Vest for men (ST5430) and Lux Padded Vest for women (ST5530) on page 129.



NEW STYLE

Classic-T Fitted  
for women, p. 25

MORE COLOURS

[stedman.eu/news](https://stedman.eu/news)

## More Colours and Sizes

We are adding colours and sizes to some of our most popular styles meeting the market's demands.



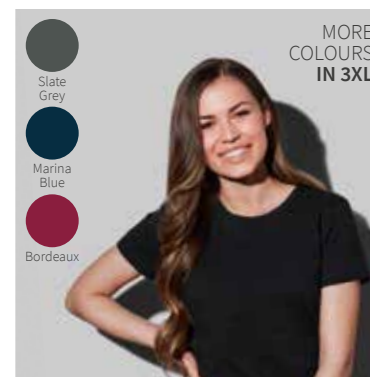
*For more information on our  
new styles and colours  
please visit our website:*

[stedman.eu/news](https://stedman.eu/news)

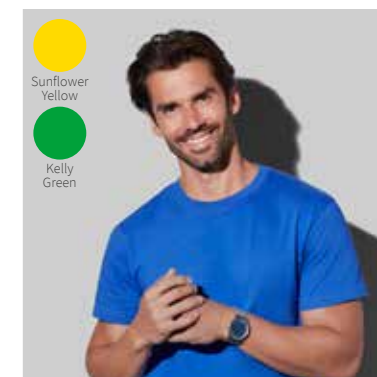




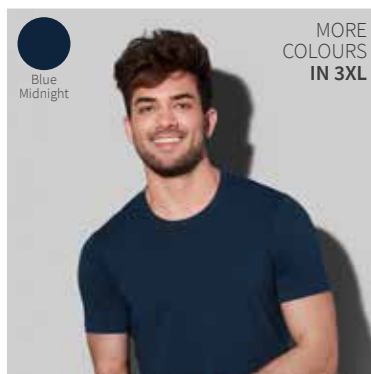
**ST2000** Classic-T for men & women, p. 24



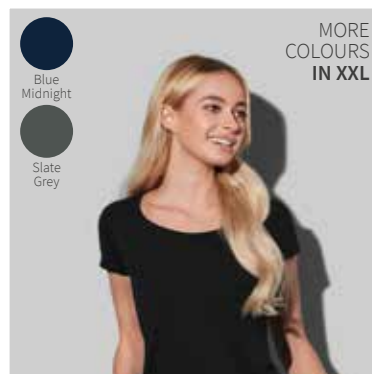
**ST2600** Classic-T Fitted for women, p. 25



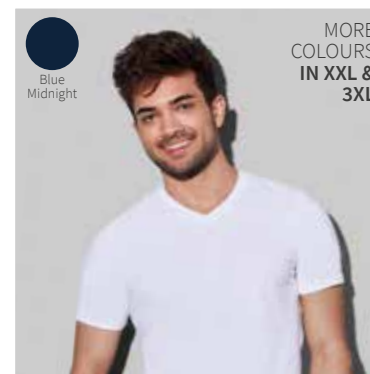
**ST2100** Comfort-T 185 for men, p. 33



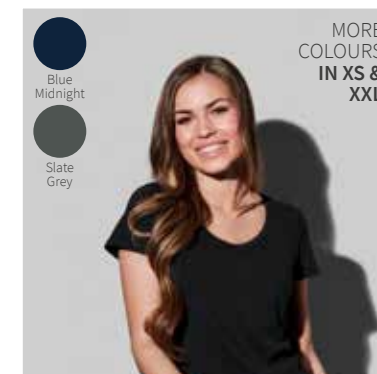
**ST9600** Clive Crew Neck for men, p. 34



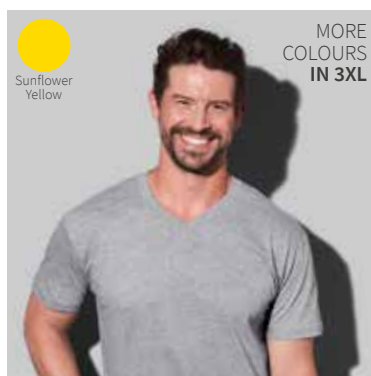
**ST9700** Claire Crew Neck for women, p. 34



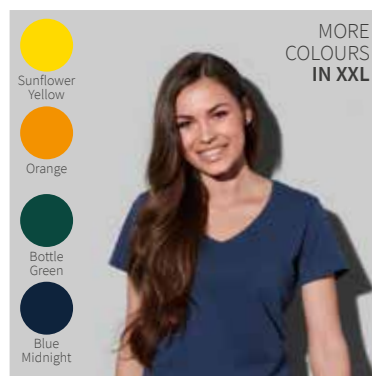
**ST9610** Clive V-neck for men, p. 48



**ST9710** Claire V-neck for women, p. 48



**ST2300** Classic-T V-neck for men, p. 45



**ST2700** Classic-T V-neck for women, p. 45



**ST2130** Comfort-T 185 Long Sleeve for men, p. 56



**ST2500** Classic-T Long Sleeve for men, p. 55

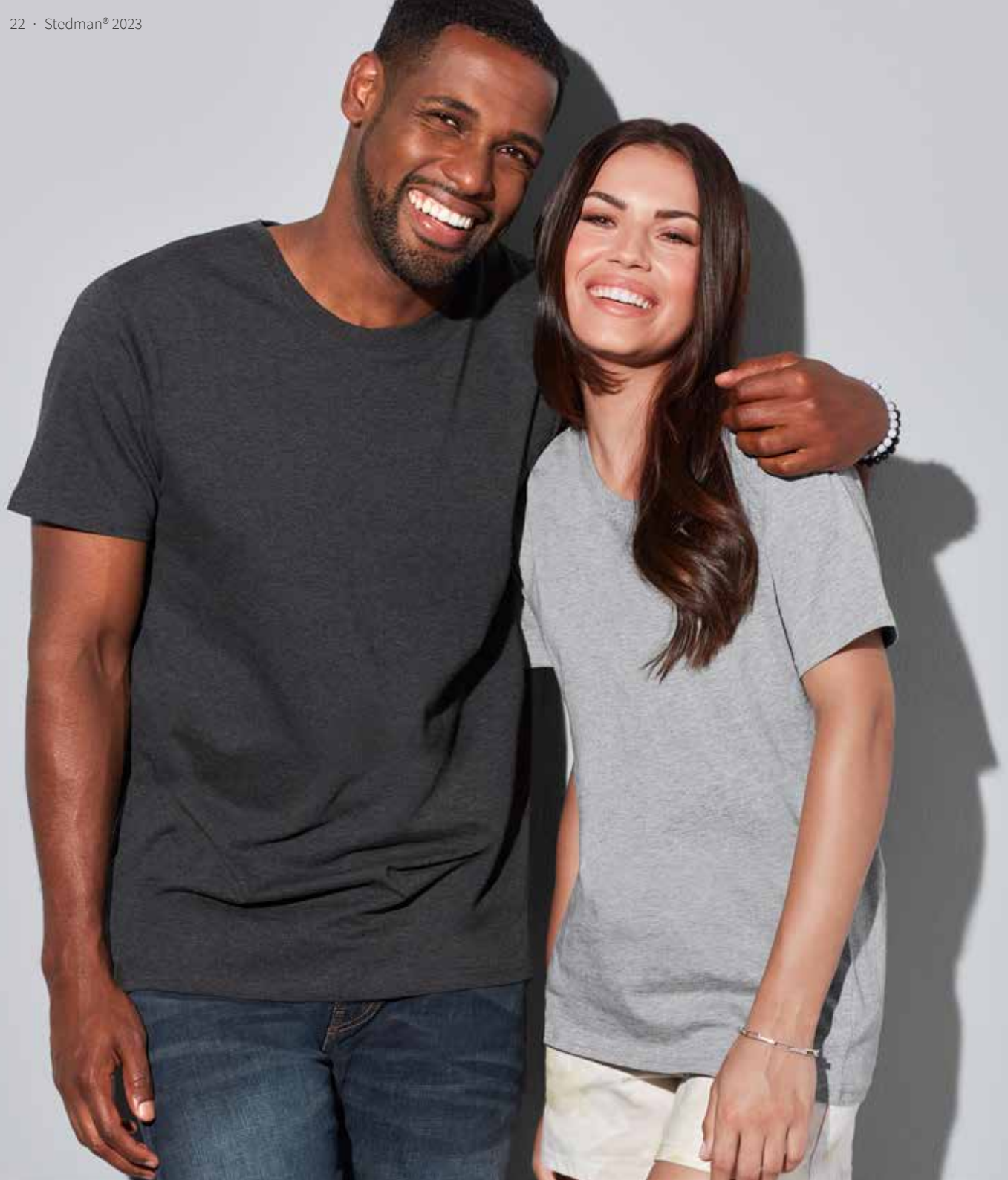


**Classic-T**  
*for men & women, p. 24*

stedman.eu

## T-shirts & More

T-shirts, V-necks, long sleeves and more made of high-quality ring-spun cotton. Ring-spun cotton T-shirts are significantly softer, more durable and last longer than their ordinary counterparts.



ST7000 UNISEX

## Lux

XS - S - M - L - XL - XXL - 3XL - 4XL - 5XL

100% ring-spun combed cotton;  
single jersey

- ✓ LUXURIOUS QUALITY RING-SPUN  
COMBED COTTON
- ✓ AVAILABLE IN 14 COLOURS
- ✓ UNISEX STYLE - GREAT FIT  
FOR MEN & WOMEN
- ✓ PREMIUM WOVEN SIZE LABEL IN THE COLLAR,  
TEAR-AWAY LABEL IN THE SIDE SEAM

Sizes 4-5XL only in: White, Black Opal, Grey Heather & Navy Blue

**180**<sub>G/M<sup>2</sup></sub> | REGULAR | UNISEX  
STYLE

**ST7000 & ST7600**  
LUX COLOURS



White



Black Opal

Dark Grey  
Heather

Grey Heather



Slate Grey

Dark Denim  
Heather

Blue Midnight



Navy Blue



Bright Royal



Bottle Green



Kelly Green



Scarlet Red



Orange

Sunflower  
Yellow

**ST7600** WOMEN

**Lux Fitted**

**XS - S - M - L - XL - XXL - 3XL**

100% ring-spun combed cotton;  
single jersey

- ✓ LUXURIOUS QUALITY RING-SPUN  
COMBED COTTON
- ✓ AVAILABLE IN 14 COLOURS
- ✓ FEMININE SHAPE
- ✓ PREMIUM WOVEN SIZE LABEL  
IN THE COLLAR
- ✓ TEAR-AWAY LABEL IN THE SIDE SEAM

Size 3XL only in: White, Black Opal, Grey Heather & Navy Blue

**160** G/M<sup>2</sup> | **FITTED**

MORE COLOURS

ST2000 UNISEX

## Classic-T

XXS - XS - S - M - L - XL  
XXL - 3XL - 4XL - 5XL

100% ring-spun cotton; single jersey  
(Grey Heather: 85% cotton, 15% viscose)

- ✓ CLASSIC BESTSELLER
- ✓ HIGH-QUALITY RING-SPUN COTTON
- ✓ UNISEX STYLE - GREAT FIT  
FOR MEN & WOMEN

Sizes 4-5XL only in: White, Black Opal, Ash, Grey  
Heather, Slate Grey, Blue Midnight, Marina Blue,  
Navy Blue, Bright Royal & Scarlet Red

**155** G/M<sup>2</sup> | REGULAR

UNISEX | CLASSIC | FAMILY  
STYLE | BESTSELLER | STYLE



ORGANIC p. 28 · FITTED p. 27  
V-NECK p. 45 · LONG SLEEVE p. 55





ST2000 & ST2600  
CLASSIC-T COLOURS



MORE COLOURS & SIZES

ST2600 WOMEN  
**Classic-T Fitted**

XS - S - M - L - XL - XXL - 3XL

100% ring-spun cotton; single jersey  
(Grey Heather: 85% cotton, 15% viscose)

- ✓ CLASSIC BESTSELLER
- ✓ HIGH-QUALITY RING-SPUN COTTON
- ✓ SIDE SEAMS

Size 3XL only in: White, Black Opal, Ash, Grey Heather, Slate Grey, Marina Blue, Blue Midnight, Navy Blue, Bright Royal & Scarlet Red

**155** G/M<sup>2</sup> | **FITTED** | **CLASSIC BESTSELLER**

 ORGANIC p. 29



ST2200 CHILDREN

## Classic-T Kids

3XS - XXS - XS - S - M - L - XL

AGE: 1-2 3-4 5-6 7-8 9-10 11-12 12-13

CM: 86-92 98-104 110-116 122-128 134-140 146-152 158-164

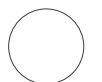
100% ring-spun cotton; single jersey  
(Grey Heather: 85% cotton, 15% viscose)

- ✓ CLASSIC BESTSELLER
- ✓ LARGE SIZE RANGE FROM TODDLERS TO TEENAGERS
- ✓ HIGH-QUALITY RING-SPUN COTTON

Sizes 3-2XS only in: White, Black Opal, Navy Blue, Bright Royal, Light Blue, Scarlet Red & Orange

**155** G/M<sup>2</sup> | REGULAR | CLASSIC BESTSELLER | FAMILY STYLE

 ORGANIC p. 30



White



Black Opal



Grey Heather



Blue Midnight



Navy Blue



Bright Royal



Ocean Blue



Light Blue



Sweet Pink



Deep Berry



Scarlet Red



Orange



Yellow



Sunflower Yellow



Kiwi Green



Kelly Green

ST2010 MEN  
**Classic-T Fitted**

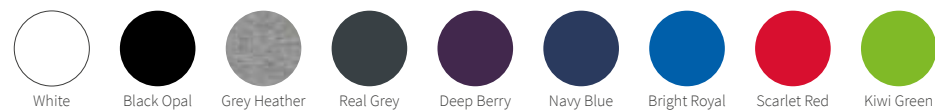
S - M - L - XL - XXL

100% ring-spun cotton; single jersey  
(Grey Heather: 85% cotton, 15% viscose)

- ✓ CLASSIC BESTSELLER
- ✓ HIGH-QUALITY RING-SPUN COTTON
- ✓ FITTED SHAPE

**155** G/M<sup>2</sup> | **FITTED** | **CLASSIC**  
BESTSELLER

 REGULAR p. 24



ORGANIC COTTON



ST2020 UNISEX  
**Classic-T Organic**

XXS - XS - S - M - L - XL - XXL - 3XL - 4XL - 5XL

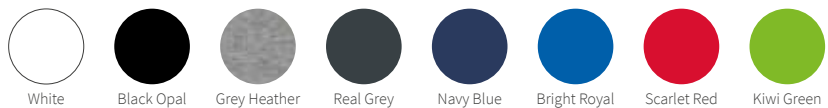
100% OCS-certified organic ring-spun cotton; single jersey  
(Grey Heather: 85% cotton, 15% viscose)

- ✓ CLASSIC BESTSELLER
- ✓ ECO-FRIENDLY COTTON (OCS-CERTIFIED)
- ✓ UNISEX STYLE - GREAT FIT FOR MEN & WOMEN

Sizes 4-5XL only in: White, Black Opal, Grey Heather, Navy Blue, Bright Royal & Scarlet Red

**145** G/M<sup>2</sup> | REGULAR | UNISEX STYLE | CLASSIC BESTSELLER | FAMILY STYLE

 NON-ORGANIC p. 24



ORGANIC COTTON



**ST2620** WOMEN  
**Classic-T Organic Fitted**

**XS - S - M - L - XL**

100% OCS-certified organic ring-spun cotton; single jersey  
 (Grey Heather: 85% cotton, 15% viscose)

- ✓ CLASSIC BESTSELLER
- ✓ ECO-FRIENDLY COTTON (OCS-CERTIFIED)
- ✓ SIDE SEAMS

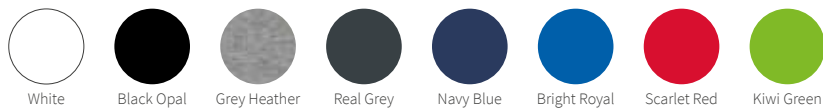
**145** G/M<sup>2</sup> | **FITTED** | **CLASSIC** BESTSELLER

 NON-ORGANIC p. 25



**THESE T-SHIRTS ARE ECO-FRIENDLY**

*Our super soft organic T-shirts are made of 100% OCS-certified organic cotton, grown without the use of toxic and persistent pesticides, herbicides or other chemical fertilizers.*



ORGANIC COTTON



## ST2220 CHILDREN Classic-T Organic Kids

**XS - S - M - L - XL**

AGE: 5-6 7-8 9-10 11-12 12-13

CM: 110-116 122-128 134-140 146-152 158-164

100% OCS-certified organic  
ring-spun cotton; single jersey  
(Grey Heather: 85% cotton, 15% viscose)

- ✓ CLASSIC BESTSELLER
- ✓ DURABLE FABRIC
- ✓ ECO-FRIENDLY COTTON (OCS-CERTIFIED)

**145** G/M<sup>2</sup> | REGULAR | CLASSIC BESTSELLER | FAMILY STYLE

 NON-ORGANIC p. 26



White



Black Opal



Grey Heather



Real Grey



Navy Blue



Bright Royal



Scarlet Red



Kiwi Green

ST9220 MEN & ST9320 WOMEN

## Slub Organic

MEN: **S - M - L - XL - XXL**

WOMEN: **S - M - L - XL**

100% OCS-certified organic ring-spun cotton, slub yarn; single jersey

- ✓ ECO-FRIENDLY COTTON (OCS-CERTIFIED)
- ✓ SLUB YARN FOR A TEXTURISED LOOK
- ✓ NO LABEL IN COLLAR

**130** G/M<sup>2</sup> | REGULAR



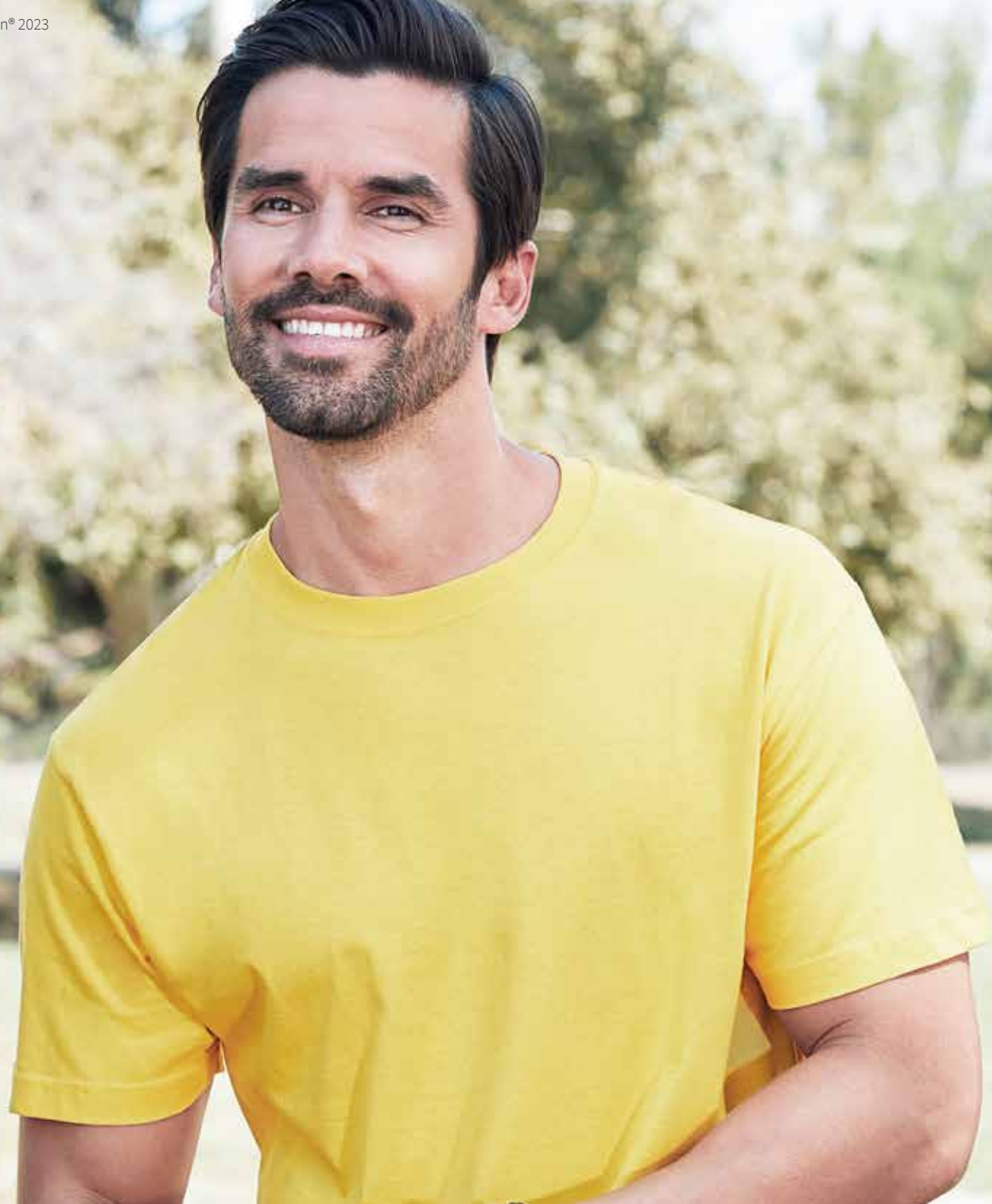
White



Black Opal



Slate Grey





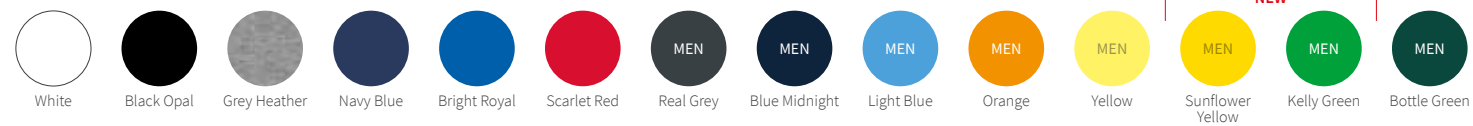
MORE COLOURS

ST2100 MEN &amp; ST2160 WOMEN

**Comfort-T 185**MEN: **S - M - L - XL - XXL - 3XL - 4XL - 5XL**WOMEN: **S - M - L - XL - XXL**100% ring-spun cotton; single jersey  
(Grey Heather: 85% cotton, 15% viscose)

- ✓ DURABLE FABRIC
- ✓ HEAVYWEIGHT RING-SPUN COTTON
- ✓ REGULAR SHAPE

Men's sizes 4-5XL only in: White, Black Opal &amp; Navy Blue

**185** G/M<sup>2</sup> | REGULAR
 LONG SLEEVE p. 56


MORE COLOURS & SIZES



**ST9600 MEN & ST9700 WOMEN**  
**Clive & Claire Crew Neck**

MEN: **S - M - L - XL - XXL - 3XL**  
 WOMEN: **XS - S - M - L - XL - XXL**

95% ring-spun combed cotton,  
 5% elastane; single jersey “full feeder”  
 (Grey Heather: 82% cotton, 14% viscose, 4% elastane)

- ✓ **STRETCHY, COMBED COTTON WITH ELASTANE**
- ✓ **FITTED SHAPE**
- ✓ **NO LABEL IN COLLAR**

Men's size XXL only in: White, Black Opal, Grey Heather, Slate Grey, Blue Midnight, Marina Blue, Salmon & Dark Chocolate  
 Men's size 3XL only in: White, Black Opal, Slate Grey, Blue Midnight & Marina Blue  
 Women's sizes XS & XXL only in: White, Black Opal, Slate Grey, Blue Midnight & Marina Blue

**170** G/M<sup>2</sup> | **FITTED**

 **REGULAR** p. 36 · **V-NECK** p. 46  
**LONG SLEEVE** p. 58-59







ST9630 MEN & ST9730 WOMEN  
**Clive & Claire Relaxed**

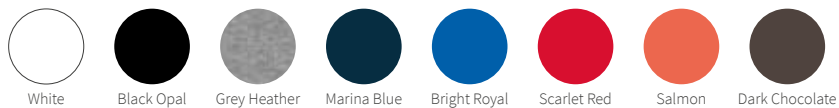
MEN: **S - M - L - XL - XXL**  
WOMEN: **XS - S - M - L - XL**

95% ring-spun combed cotton,  
5% elastane; single jersey "full feeder"  
(Grey Heather: 82% cotton, 14% viscose, 4% elastane)

- ✓ **STRETCHY, COMBED COTTON WITH ELASTANE**
- ✓ **REGULAR SHAPE**
- ✓ **NO LABEL IN COLLAR**

**170**<sub>G/M<sup>2</sup></sub> | **REGULAR**

 **FITTED** p. 34



White

Black Opal

Grey Heather

Marina Blue

Bright Royal

Scarlet Red

Salmon

Dark Chocolate

ST9120 WOMEN  
**Megan Crew Neck**

**XS - S - M - L - XL**

100% ring-spun combed cotton; single jersey  
 (Grey Heather: 85% cotton, 15% viscose)

- ✓ HIGH-QUALITY COMBED COTTON
- ✓ FITTED CUT WITH SLIM RIB COLLAR
- ✓ NO LABEL IN COLLAR

Size XS only in: White, Black Opal & Marina Blue

**145** G/M<sup>2</sup> | **FITTED**

 V-NECK p. 51, 134



White



Black Opal



Marina Blue



Crimson Red



Pumpkin

LAST CHANCE

50%



ST9020 MEN

## Morgan Crew Neck

S - M - L - XL - XXL

100% ring-spun cotton; single jersey  
(Grey Heather: 85% cotton, 15% viscose)

- ✓ PREMIUM RING-SPUN COTTON
- ✓ FITTED CUT WITH RIB COLLAR
- ✓ SIDE SEAMS
- ✓ NO LABEL IN COLLAR

Size XXL only in: White, Black Opal, Grey Heather, Slate Grey, Marina Blue, King Blue, Crimson Red & Military Green

**160** G/M<sup>2</sup> | FITTED

 LONG SLEEVE p. 57



White

Black Opal

Grey Heather

Slate Grey

Marina Blue

King Blue

Deep Lilac

Crimson Red

Daisy Yellow

Green Flash

Military Green

Cream White

Pumpkin

ST9000 MEN  
**Ben Crew Neck**

S - M - L - XL - XXL - 3XL

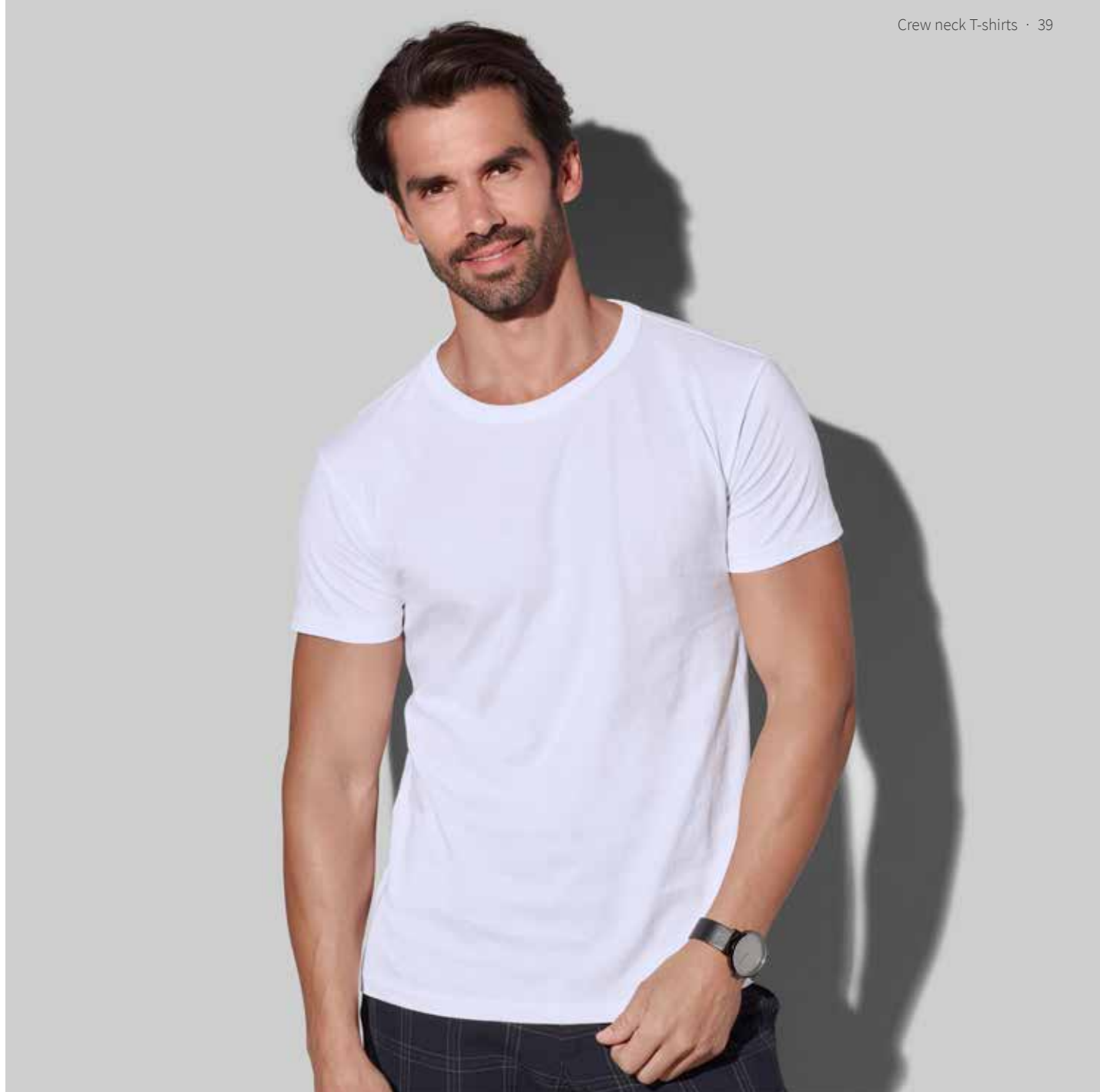
100% ring-spun cotton; single jersey  
 (Grey Heather: 85% cotton, 15% viscose)

- ✓ PREMIUM RING-SPUN COTTON
- ✓ REGULAR CUT WITH RIB COLLAR
- ✓ SIDE SEAMS
- ✓ NO LABEL IN COLLAR

Size 3XL only in: White, Black Opal & Marina Blue

**160** G/M<sup>2</sup> | REGULAR

 V-NECK p. 50, 135



White



Black Opal



Grey Heather



Slate Grey



Marina Blue



King Blue



Hawaii Blue



Deep Lilac



Daisy Yellow



Green Flash



ST9400 MEN & ST9500 WOMEN

## Shawn & Sharon Slub Crew Neck

MEN: **S - M - L - XL - XXL**

WOMEN: **S - M - L - XL**

100% ring-spun cotton, slub yarn;  
single jersey

- ✓ SLUB YARN FOR A TEXTURISED LOOK
- ✓ SLIM, MODERN COLLAR
- ✓ NO LABEL IN COLLAR

**140**<sub>G/M<sup>2</sup></sub> | REGULAR

 V-NECK p. 134



White



Black Opal



Powder Grey



Crimson Red



ST9100 MEN & ST9110 WOMEN

## Finest Cotton-T

S - M - L - XL

100% ring-spun combed cotton;  
single jersey

- ✓ FINE, SOFT AND STRETCHY  
COMBED COTTON
- ✓ ROLLED SELF-FABRIC COLLAR
- ✓ NO LABEL IN COLLAR

**105** G/M<sup>2</sup> | **REGULAR**  
(MEN) | **FITTED**  
(WOMEN)



White



Black Opal



Marina Blue



Crimson Red



Slate Grey

LAST CHANCE



WOMEN

50%



ST9430 MEN & ST9530 WOMEN

## Shawn & Sharon Henley T-shirt

MEN: **S - M - L - XL - XXL**

WOMEN: **S - M - L - XL**

100% ring-spun cotton, slub yarn;  
single jersey

- ✓ SLUB YARN FOR A TEXTURISED LOOK
- ✓ METAL BUTTONS
- ✓ NO LABEL IN COLLAR

**140**<sub>G/M<sup>2</sup></sub> | REGULAR

 LONG SLEEVE p. 60



White



Black Opal



MEN

Slate Grey





ST2300 MEN & ST2700 WOMEN  
**Classic-T V-neck**

MEN: **S - M - L - XL - XXL - 3XL**  
 WOMEN: **S - M - L - XL - XXL**

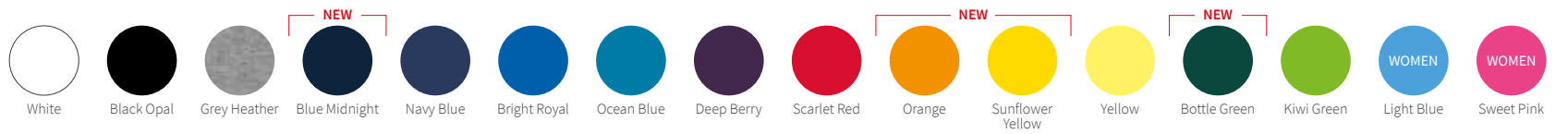
100% ring-spun cotton; single jersey  
 (Grey Heather: 85% cotton, 15% viscose)

- ✓ CLASSIC BESTSELLER
- ✓ HIGH-QUALITY RING-SPUN COTTON
- ✓ REGULAR SHAPE

Men's size 3XL and women's size XXL only in: White, Black Opal, Grey Heather, Navy Blue, Bright Royal & Scarlet Red

**155** G/M<sup>2</sup> | **REGULAR** | **CLASSIC BESTSELLER**

 CREW NECK p. 24  
 LONG SLEEVE p. 55





**ST9610 MEN & ST9710 WOMEN**  
**Clive & Claire V-neck**

MEN: **S - M - L - XL - XXL - 3XL**

WOMEN: **XS - S - M - L - XL - XXL**

95% ring-spun combed cotton,  
 5% elastane; single jersey "full feeder"  
 (Grey Heather: 82% cotton, 14% viscose,  
 4% elastane)

- ✓ **STRETCHY, COMBED COTTON WITH ELASTANE**
- ✓ **FITTED SHAPE**
- ✓ **NO LABEL IN COLLAR**

Men's size XXL only in: White, Black Opal, Grey Heather, Slate Grey, Blue Midnight & Marina Blue

Men's size 3XL and women's sizes XS & XXL only in: White, Black Opal, Slate Grey, Blue Midnight & Marina Blue

**170** G/M<sup>2</sup> | **FITTED**



CREW NECK p. 34  
 LONG SLEEVE p. 58-59



White



Black Opal



Grey Heather



Marina Blue



Blue Midnight



Slate Grey



King Blue

NEW







ST9690 MEN  
**Dean Deep V-neck**

S - M - L - XL - XXL

95% ring-spun combed cotton,  
5% elastane; single jersey “full feeder”  
(Grey Heather: 82% cotton, 14% viscose,  
4% elastane)

- ✓ STRETCHY, COMBED COTTON  
WITH ELASTANE
- ✓ FITTED SHAPE
- ✓ PERFECT AS UNDERSHIRT
- ✓ NO LABEL IN COLLAR

**170** G/M<sup>2</sup> | FITTED



**THIS  
T-SHIRT IS  
LONGER**

*This T-shirt is  
perfectly suited as  
an undershirt due  
to its above average  
length and stretchy  
material.*



White



Black Opal



**ST9010 MEN**  
**Ben V-neck**

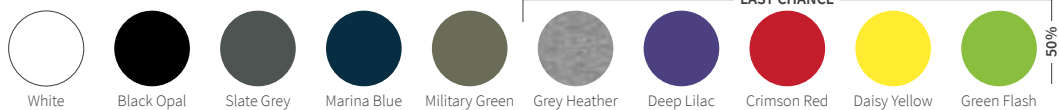
**S - M - L - XL - XXL**

100% ring-spun cotton;  
single jersey  
(Grey Heather: 85% cotton, 15% viscose)

- ✓ PREMIUM RING-SPUN COTTON
- ✓ REGULAR CUT WITH RIB COLLAR
- ✓ NO LABEL IN COLLAR

**160** G/M<sup>2</sup> | **REGULAR**

 CREW NECK p. 39



ST9130 WOMEN  
**Megan V-neck**

S - M - L - XL

100% ring-spun combed cotton;  
single jersey  
(Grey Heather: 85% cotton, 15% viscose)

- ✓ HIGH-QUALITY COMBED COTTON
- ✓ FITTED CUT WITH SLIM RIB COLLAR
- ✓ NO LABEL IN COLLAR

**145** G/M<sup>2</sup> | FITTED

 CREW NECK p. 37



**THIS  
COTTON IS  
COMBED**

*Megan Crew Neck (p. 37)  
and V-neck are made of  
combed cotton which  
gives the fabric a more  
even surface, excellent for  
printing more detailed  
graphics.*



White



Black Opal



Marina Blue



LAST CHANCE

Crimson Red

50%



ST2800 MEN & ST2900 WOMEN

## Classic Tank Top

MEN: **S - M - L - XL - XXL**

WOMEN: **S - M - L - XL**

100% ring-spun cotton; single jersey

- ✓ HIGH-QUALITY RING-SPUN COTTON
- ✓ COLLAR WITH RIB BINDING
- ✓ REGULAR SHAPE

**155**<sub>G/M<sup>2</sup></sub> | REGULAR | CLASSIC  
BESTSELLER



White



Black Opal

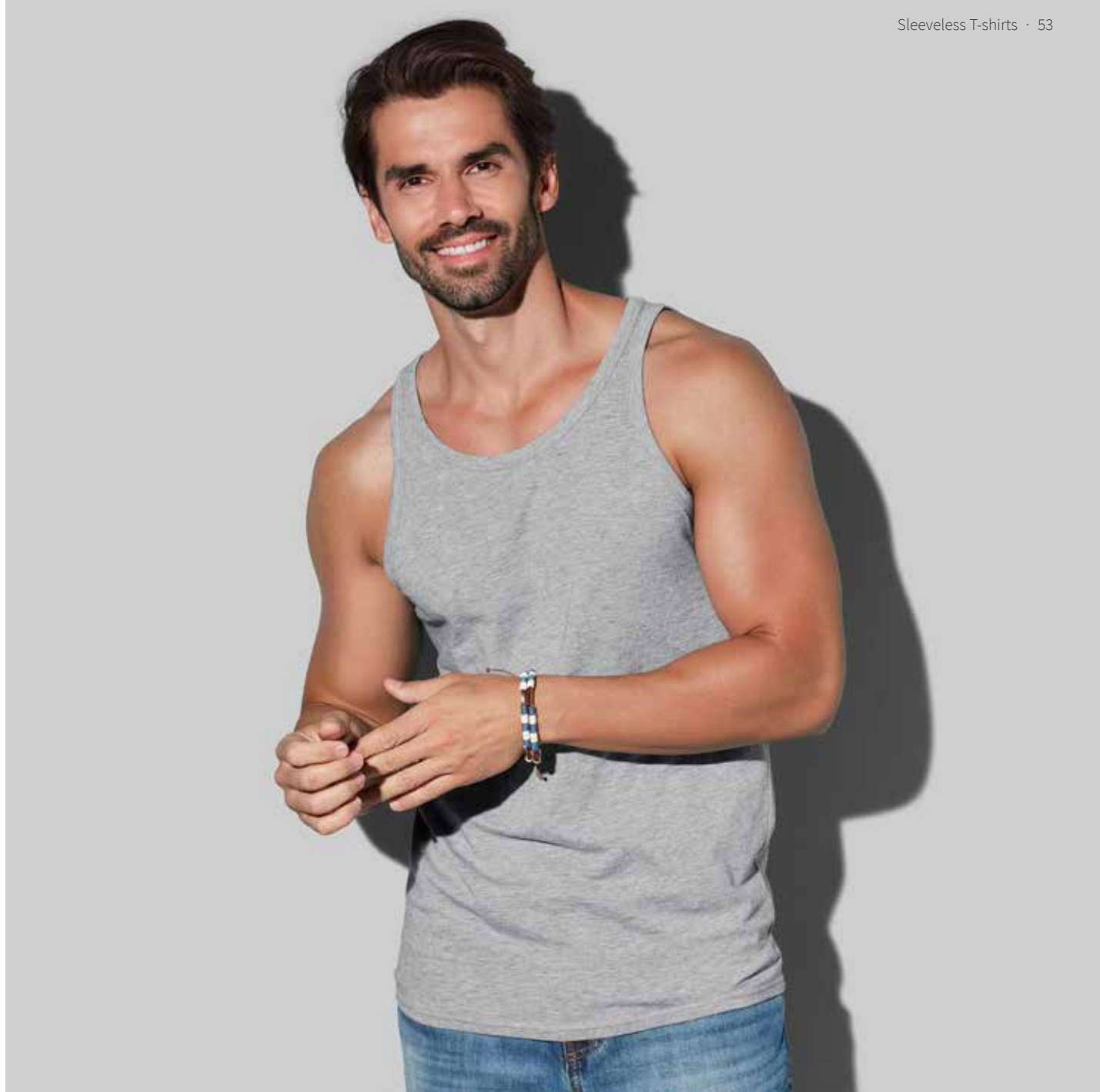
ST2810 MEN  
**Tank Top**

S - M - L - XL - XXL

100% ring-spun cotton; single jersey  
(Grey Heather: 85% cotton, 15% viscose)

- ✓ PREMIUM RING-SPUN COTTON
- ✓ MODERN, FITTED SHAPE
- ✓ NO LABEL IN COLLAR
- ✓ TEAR-AWAY LABEL IN SIDE SEAM

**160** G/M<sup>2</sup> | FITTED



White



Black Opal



Grey Heather



MORE SIZES



ST2500 MEN  
**Classic-T Long Sleeve**

S - M - L - XL - XXL - 3XL

100% ring-spun cotton; single jersey  
(Grey Heather: 85% cotton, 15% viscose)

- ✓ CLASSIC BESTSELLER
- ✓ HIGH-QUALITY RING-SPUN COTTON
- ✓ REGULAR SHAPE

Size 3XL only in: White, Black Opal, Grey Heather & Navy Blue

**155** G/M<sup>2</sup> | REGULAR | CLASSIC BESTSELLER

 SHORT SLEEVE CREW NECK p. 24  
SHORT SLEEVE V-NECK p. 45



MORE SIZES



ST2130 MEN

## Comfort-T 185 Long Sleeve

S - M - L - XL - XXL - 3XL

100% ring-spun cotton; single jersey  
(Grey Heather: 85% cotton, 15% viscose)

- ✓ DURABLE FABRIC
- ✓ HEAVYWEIGHT RING-SPUN COTTON
- ✓ REGULAR SHAPE

**185** G/M<sup>2</sup> | REGULAR

 SHORT SLEEVE p. 33



White



Black Opal



Grey Heather



Navy Blue



ST9040 MEN  
**Morgan Long Sleeve**

S - M - L - XL

100% ring-spun cotton; single jersey

- ✓ PREMIUM RING-SPUN COTTON
- ✓ FITTED CUT WITH RIB COLLAR
- ✓ NO LABEL IN COLLAR

**160** G/M<sup>2</sup> | FITTED

 SHORT SLEEVE p. 38



White



Black Opal



Slate Grey



Marina Blue



ST9620 MEN

## Clive Long Sleeve

S - M - L - XL - XXL

95% ring-spun combed cotton,  
5% elastane; single jersey “full feeder”  
(Grey Heather: 82% cotton, 14% viscose, 4% elastane)

- ✓ STRETCHY, COMBED COTTON  
WITH ELASTANE
- ✓ FITTED SHAPE
- ✓ NO LABEL IN COLLAR

**170** G/M<sup>2</sup> | FITTED



SHORT SLEEVE CREW NECK p. 34  
SHORT SLEEVE V-NECK p. 46



White



Black Opal



Grey Heather



Slate Grey

ST9720 WOMEN  
**Claire V-neck Long Sleeve**

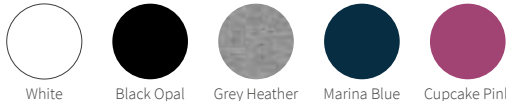
S - M - L - XL

95% ring-spun combed cotton,  
5% elastane; single jersey “full feeder”  
(Grey Heather: 82% cotton, 14% viscose, 4% elastane)

- ✓ STRETCHY, COMBED COTTON WITH ELASTANE
- ✓ FITTED SHAPE
- ✓ NO LABEL IN COLLAR

**170** G/M<sup>2</sup> | FITTED

 SHORT SLEEVE CREW NECK p. 34  
SHORT SLEEVE V-NECK p. 46



White Black Opal Grey Heather Marina Blue Cupcake Pink



ST9460 MEN & ST9580 WOMEN

## Shawn & Sharon Henley Long Sleeve

MEN: **S - M - L - XL - XXL**

WOMEN: **S - M - L - XL**

100% ring-spun cotton, slub yarn;  
single jersey

- ✓ SLUB YARN FOR A TEXTURISED LOOK
- ✓ METAL BUTTONS
- ✓ NO LABEL IN COLLAR

**140**<sub>G/M<sup>2</sup></sub> | REGULAR

 SHORT SLEEVE p. 42



White



Black Opal

ST9080 MEN & ST9180 WOMEN  
**Knit Long Sleeve**

MEN: **S - M - L - XL - XXL**  
WOMEN: **S - M - L - XL**

58% polyester, 37% viscose,  
5% elastane

- ✓ SOFT KNIT FABRIC WITH VISCOSE
- ✓ FASHIONABLE LOOSE SHAPE
- ✓ NO LABEL IN COLLAR

**210** G/M<sup>2</sup> | REGULAR



Light Grey  
Melange



Dark Grey  
Melange



Marina Blue  
Melange



ST9691 MEN

## Dexter Boxers

S - M - L - XL - XXL

92% ring-spun combed cotton,  
8% elastane; single jersey “full feeder”

- ✓ STRETCHY, COMBED COTTON  
WITH ELASTANE
- ✓ ELASTIC WAISTBAND
- ✓ 2-PACK

**195** G/M<sup>2</sup> | FITTED



White



Black Opal

ST9692 MEN  
**Dexter Briefs**

S - M - L - XL - XXL

92% ring-spun combed cotton,  
8% elastane; single jersey "full feeder"

- ✓ STRETCHY, COMBED COTTON  
WITH ELASTANE
- ✓ ELASTIC WAISTBAND
- ✓ 2-PACK

**195**<sub>G/M<sup>2</sup></sub> | FITTED



White



Black Opal



**Clive Polo**  
*for men, p. 66*



[stedman.eu](http://stedman.eu)

## **Polo Shirts**

Our newest addition to the Stedman® collection: Clive & Claire Polo shirts made of a super stretchy combed cotton and elastane blend. You can find Clive & Claire Polo on page 66.

NEW STYLE



ST9640 MEN & ST9740 WOMEN  
**Clive & Claire Polo**

MEN: **S - M - L - XL - XXL - 3XL**  
WOMEN: **XS - S - M - L - XL - XXL**

95% ring-spun combed cotton,  
5% elastane; true piqué

- ✓ HIGH-QUALITY COTTON PIQUÉ FABRIC
- ✓ STRETCHY FABRIC
- ✓ 3 TONE-ON-TONE BUTTONS
- ✓ MODERN, NARROW COLLAR FOR WOMEN
- ✓ PREMIUM WOVEN SIZE LABEL IN THE COLLAR
- ✓ TEAR-AWAY LABEL IN THE SIDE SEAM

**210**<sub>G/M<sup>2</sup></sub> | FITTED



White

Black Opal

Slate Grey

Blue Midnight

Marina Blue



### **NEW STYLE!**

*Our new Clive & Claire polo shirts are made of a super stretchy combed cotton and elastane blend. The high-quality cotton piqué creates a robust yet soft waffle-like structure. Modern rib cuffs, 3 tone-on-tone buttons and side seams with slits make these polo shirts a beautiful addition to our popular “Clive & Claire” range.*



**ST3000 MEN & ST3100 WOMEN**  
**Polo**

MEN: **S - M - L - XL - XXL - 3XL - 4XL - 5XL**  
 WOMEN: **XS - S - M - L - XL - XXL**

100% ring-spun cotton;  
 single jersey, piqué look  
 (Grey Heather: 85% cotton, 15% viscose)

- ✓ CLASSIC BESTSELLER
- ✓ SOFT SINGLE JERSEY COTTON WITH PIQUÉ LOOK
- ✓ RIB COLLAR

Men's sizes 3-5XL and women's sizes XS & XXL only in:  
 White, Black Opal, Grey Heather, Blue Midnight, Navy Blue,  
 Bright Royal & Scarlet Red

**170** G/M<sup>2</sup> | **REGULAR** | **CLASSIC BESTSELLER** | **FAMILY STYLE**

 LONG SLEEVE p. 73



ST3200 CHILDREN

## Polo Kids

XS - S - M - L - XL

AGE: 5-6 7-8 9-10 11-12 12-13

CM: 110-116 122-128 134-140 146-152 158-164

100% ring-spun cotton;  
single jersey, piqué look  
(Grey Heather: 85% cotton, 15% viscose)

- ✓ CLASSIC BESTSELLER
- ✓ SOFT SINGLE JERSEY COTTON  
WITH PIQUÉ LOOK
- ✓ RIB COLLAR

170 <sup>G/M<sup>2</sup></sup> | REGULAR | CLASSIC BESTSELLER | FAMILY STYLE



White



Black Opal



Grey Heather



Navy Blue



Bright Royal



Scarlet Red



ST9060 MEN & ST9150 WOMEN  
**Harper & Hanna Polo**

MEN: **S - M - L - XL - XXL**

WOMEN: **S - M - L - XL**

100% ring-spun combed cotton;  
true piqué  
(Grey Heather: 85% cotton, 15% viscose)

- ✓ PREMIUM COMBED COTTON PIQUÉ
- ✓ RIB COLLAR
- ✓ NO LABEL IN COLLAR

**180** G/M<sup>2</sup> | REGULAR (MEN)

**170** G/M<sup>2</sup> | REGULAR (WOMEN)



White



Black Opal



Marina Blue



King Blue



Deep Lilac



Crimson Red



Salmon Pink



Green Flash



MEN



MEN



WOMEN



MEN



MEN



MEN



WOMEN

LAST CHANCE

50%





ST9050 MEN

## Henry Polo

S - M - L - XL - XXL

100% ring-spun combed cotton;  
true piqué

- ✓ HEAVYWEIGHT PREMIUM COMBED COTTON PIQUÉ
- ✓ RIB COLLAR AND SIDE SEAM SLITS
- ✓ NO LABEL IN COLLAR

225 G/M<sup>2</sup> | REGULAR



White



Black Opal



Slate Grey



Marina Blue



True Blue



Crimson Red



Bahama Green



ST3400 MEN  
**Polo Long Sleeve**

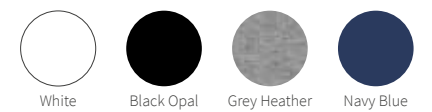
S - M - L - XL - XXL

100% ring-spun cotton;  
single jersey, piqué look  
(Grey Heather: 85% cotton, 15% viscose)

- ✓ CLASSIC BESTSELLER
- ✓ SOFT SINGLE JERSEY COTTON  
WITH PIQUÉ LOOK
- ✓ RIB COLLAR

**170** G/M<sup>2</sup> | REGULAR | CLASSIC  
BESTSELLER

 SHORT SLEEVE p. 68





Sweatshirt Select  
for men, p. 77

[stedman.eu](https://stedman.eu)

## Sweatshirts

The perfect choice for athletic as well as casual outfits: sweatshirts, hoodies, sweat jackets and -pants, made of soft, high-quality cotton blends and recycled materials.



ST4000 UNISEX  
**Sweatshirt Classic**

XS - S - M - L - XL - XXL - 3XL

80% ring-spun cotton, 20% polyester  
(Grey Heather: 70% cotton, 20% polyester, 10% viscose)

- ✓ 100% COTTON SURFACE
- ✓ DURABLE COTTON-BLEND
- ✓ BRUSHED INSIDE
- ✓ UNISEX STYLE - GREAT FIT FOR MEN & WOMEN

**280**<sub>G/M<sup>2</sup></sub> | REGULAR | UNISEX  
STYLE



White



Black Opal



Grey Heather



Real Grey



Navy Blue



Bright Royal



Scarlet Red

ST5620 MEN  
**Sweatshirt Select**

S - M - L - XL - XXL

80% ring-spun cotton, 20% polyester  
(Grey Heather: 70% cotton, 30% polyester)

- ✓ 100% COTTON SURFACE
- ✓ SOFT COTTON-BLEND
  - ✓ BRUSHED INSIDE
- ✓ MODERN, SPORTY DESIGN WITH SIDE PANELS
- ✓ NO LABEL IN COLLAR

**280** G/M<sup>2</sup> | REGULAR





ST4200 UNISEX

## Sweat Hoodie Light

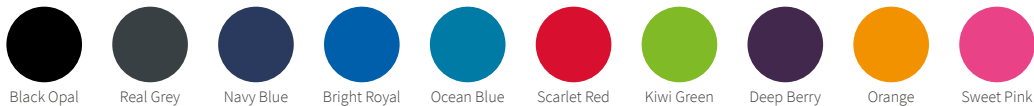
XS - S - M - L - XL - XXL - 3XL - 4XL

100% ring-spun cotton

- ✓ LIGHTWEIGHT RING-SPUN COTTON
- ✓ BRUSHED INSIDE
- ✓ UNISEX STYLE - GREAT FIT FOR MEN & WOMEN
- ✓ NO LABEL IN COLLAR

Sizes 3-4XL only in: Black Opal, Real Grey & Navy Blue

**190** G/M<sup>2</sup> | REGULAR | UNISEX  
STYLE



Black Opal Real Grey Navy Blue Bright Royal Ocean Blue Scarlet Red Kiwi Green Deep Berry Orange Sweet Pink





**ST4100 MEN & ST4110 WOMEN**  
**Sweat Hoodie Classic**

MEN: **S - M - L - XL - XXL - 3XL**

WOMEN: **S - M - L - XL**

80% ring-spun cotton, 20% polyester  
(Grey Heather: 70% cotton, 20% polyester, 10% viscose)

- ✓ 100% COTTON SURFACE
- ✓ DURABLE COTTON-BLEND
- ✓ BRUSHED INSIDE

**280** G/M<sup>2</sup> | REGULAR



White



Black Opal



Grey Heather



Navy Blue



Bright Royal



Scarlet Red





ST5600 UNISEX

## Sweat Hoodie Select

XS - S - M - L - XL - XXL - 3XL

80% ring-spun cotton, 20% polyester  
(Grey Heather: 70% cotton, 30% polyester)

- ✓ 100% COTTON SURFACE
- ✓ SOFT COTTON-BLEND
- ✓ BRUSHED INSIDE
- ✓ UNISEX STYLE - GREAT FIT FOR MEN & WOMEN
- ✓ NO LABEL IN COLLAR

Sizes XS & 3XL only in: Black Opal, Grey Heather, Slate Grey & Blue Midnight

**280** G/M<sup>2</sup> | REGULAR | UNISEX STYLE



Black Opal

Grey Heather

Slate Grey

Blue Midnight

Crimson Red



ST5610 MEN & ST5710 WOMEN  
**Sweat Jacket Select**

MEN: **S - M - L - XL - XXL - 3XL**

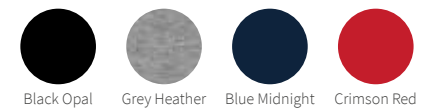
WOMEN: **S - M - L - XL**

80% ring-spun cotton, 20% polyester  
 (Grey Heather: 70% cotton, 30% polyester)

- ✓ 100% COTTON SURFACE
- ✓ SOFT COTTON-BLEND
- ✓ BRUSHED INSIDE
- ✓ MODERN DESIGN WITH ZIPPER AND METAL PULLER
- ✓ NO LABEL IN COLLAR

Men's size 3XL only in: Black Opal,  
 Grey Heather & Blue Midnight

**280** G/M<sup>2</sup> | REGULAR



Black Opal Grey Heather Blue Midnight Crimson Red

RECYCLED



ST5630 UNISEX

## Recycled Sweat Hoodie

XS - S - M - L - XL - XXL - 3XL

80% ring-spun cotton, 20% recycled polyester  
(Grey Heather: 70% cotton, 30% recycled polyester)

- ✓ 100% COTTON SURFACE
- ✓ ECO-FRIENDLY MATERIAL MADE FROM 6 RECYCLED PLASTIC BOTTLES
- ✓ BRUSHED INSIDE
- ✓ FRONT SURFACE FULLY PRINTABLE DESPITE SIDE POCKETS
- ✓ UNISEX STYLE - GREAT FIT FOR MEN & WOMEN
- ✓ NO LABEL IN COLLAR
- ✓ TEAR-AWAY LABEL IN SIDE SEAM

**280**<sub>G/M<sup>2</sup></sub> | REGULAR | UNISEX  
STYLE



Black Opal



Grey Heather



Blue Midnight



ST5650 UNISEX

## Recycled Sweatpants

XS - S - M - L - XL - XXL

80% ring-spun cotton, 20% recycled polyester  
(Grey Heather: 70% cotton, 30% recycled polyester)

- ✓ 100% COTTON SURFACE
- ✓ ECO-FRIENDLY MATERIAL MADE FROM 6 RECYCLED PLASTIC BOTTLES
- ✓ BRUSHED INSIDE
- ✓ UNISEX STYLE - GREAT FIT FOR MEN & WOMEN
- ✓ TEAR-AWAY LABEL IN WAISTBAND

**280** G/M<sup>2</sup> | REGULAR | UNISEX STYLE

RECYCLED



Black Opal



Grey Heather



Blue Midnight

**Active 140 Raglan**  
*for men, p. 92*



stedman.eu

## Sports

The Stedman® sports range has the right style for your workout needs. High-quality, moisture-wicking functional fabrics that are breathable and modern. If you prefer sustainable materials, choose one of many styles made from recycled plastic bottles.



**ST8000 MEN & ST8100 WOMEN**  
**Sports-T**

MEN: **S - M - L - XL - XXL - 3XL**  
WOMEN: **XS - S - M - L - XL - XXL**

100% ACTIVE-DRY® polyester; interlock

- ✓ TIGHT KNIT, ELASTIC FABRIC WITH SLEEK SURFACE
- ✓ QUICK-DRYING AND MOISTURE-WICKING
- ✓ NO LABEL IN COLLAR

**140**<sub>G/M<sup>2</sup></sub> | **FITTED** | **FAMILY**  
STYLE



White



Black Opal



Silver Grey



Granite Grey



Blue Midnight



Hawaii Blue



Crimson Red



Cyber Orange



Cyber Yellow



Kiwi Green



WOMEN

Sweet Pink



ST8170 CHILDREN  
**Sports-T Kids**

**S - M - L - XL**

AGE: 7-8 9-10 11-12 12-13

CM: 122-128 134-140 146-152 158-164

100% ACTIVE-DRY<sup>®</sup> polyester; interlock

- ✓ TIGHT KNIT, ELASTIC FABRIC  
WITH SLEEK SURFACE
- ✓ QUICK-DRYING AND MOISTURE-WICKING
- ✓ NO LABEL IN COLLAR
- ✓ TEAR-AWAY LABEL IN SIDE SEAM

**140** G/M<sup>2</sup> | REGULAR | FAMILY  
STYLE



**THESE SHIRTS  
 DRY FAST**

*Our interlock styles  
 have a sleek surface  
 that is quick-drying  
 and provides great  
 moisture control.*



White



Black Opal



Blue Midnight



Hawaii Blue



Crimson Red



Cyber Orange



Cyber Yellow



Kiwi Green



Sweet Pink



ST8010 MEN & ST8110 WOMEN

## Sports Top

MEN: **S - M - L - XL - XXL**

WOMEN: **S - M - L - XL**

100% ACTIVE-DRY® polyester; interlock

- ✓ TIGHT KNIT, ELASTIC FABRIC WITH SLEEK SURFACE
- ✓ QUICK-DRYING AND MOISTURE-WICKING
- ✓ NO LABEL IN COLLAR

**140**<sub>G/M<sup>2</sup></sub> | FITTED



White



Black Opal



WOMEN

Sweet Pink





ST8410 MEN & ST8500 WOMEN

## Active 140 Raglan

MEN: **S - M - L - XL - XXL**

WOMEN: **S - M - L - XL**

100% ACTIVE-DRY® polyester;  
bird-eyelet mesh

- ✓ LIGHT AND STRETCHY MESH FABRIC
- ✓ RAGLAN SLEEVES
- ✓ GREAT MOISTURE-CONTROL
- ✓ NO LABEL IN COLLAR

**140**<sub>G/M<sup>2</sup></sub> | REGULAR | FAMILY  
STYLE



White



Black Opal



Marina Blue



King Blue



Crimson Red



Cyber Yellow



Kiwi Green

ST8570 CHILDREN  
**Active 140 Raglan Kids**

**S - M - L - XL**

AGE: 7-8 9-10 11-12 12-13

CM: 122-128 134-140 146-152 158-164

100% ACTIVE-DRY® polyester;  
 bird-eyelet mesh

- ✓ LIGHT AND STRETCHY MESH FABRIC
- ✓ RAGLAN SLEEVES
- ✓ GREAT MOISTURE-CONTROL
- ✓ NO LABEL IN COLLAR

**140** G/M<sup>2</sup> | REGULAR | FAMILY  
 STYLE



**LIGHT AND  
 STRETCHY MESH**

*Our popular Active  
 140 mesh line is the  
 perfect choice for  
 any workout.*



White



Black Opal



Marina Blue



King Blue



Crimson Red



Cyber Yellow



Kiwi Green



ST8030 MEN & ST8130 WOMEN  
**Active 140 Team Raglan**

MEN: **S - M - L - XL - XXL**

WOMEN: **S - M - L - XL**

100% ACTIVE-DRY® polyester;  
sleek mesh

- ✓ LIGHT AND STRETCHY MESH FABRIC WITH SLEEK SURFACE
- ✓ RAGLAN SLEEVES
- ✓ GREAT MOISTURE-CONTROL
- ✓ NO LABEL IN COLLAR

**140**<sub>G/M<sup>2</sup></sub> | REGULAR



White



Black Opal



Silver Grey



Granite Grey



Hawaii Blue



Cyber Yellow



Bahama Green

LAST CHANCE

WOMEN

50%

ST8400 MEN  
**Active 140 Crew Neck**

S - M - L - XL - XXL

100% ACTIVE-DRY® polyester;  
bird-eyelet mesh

- ✓ LIGHT AND STRETCHY MESH FABRIC
- ✓ GREAT MOISTURE-CONTROL
- ✓ NO LABEL IN COLLAR

**140** G/M<sup>2</sup> | REGULAR



White



Black Opal



Marina Blue



King Blue



Crimson Red



Cyber Yellow



ST8440 MEN

## Active 140 Sleeveless

S - M - L - XL - XXL

100% ACTIVE-DRY® polyester;  
bird-eyelet mesh

- ✓ LIGHT AND STRETCHY MESH FABRIC
- ✓ GREAT MOISTURE-CONTROL
- ✓ NO LABEL IN COLLAR

**140** G/M<sup>2</sup> | REGULAR



White



Black Opal



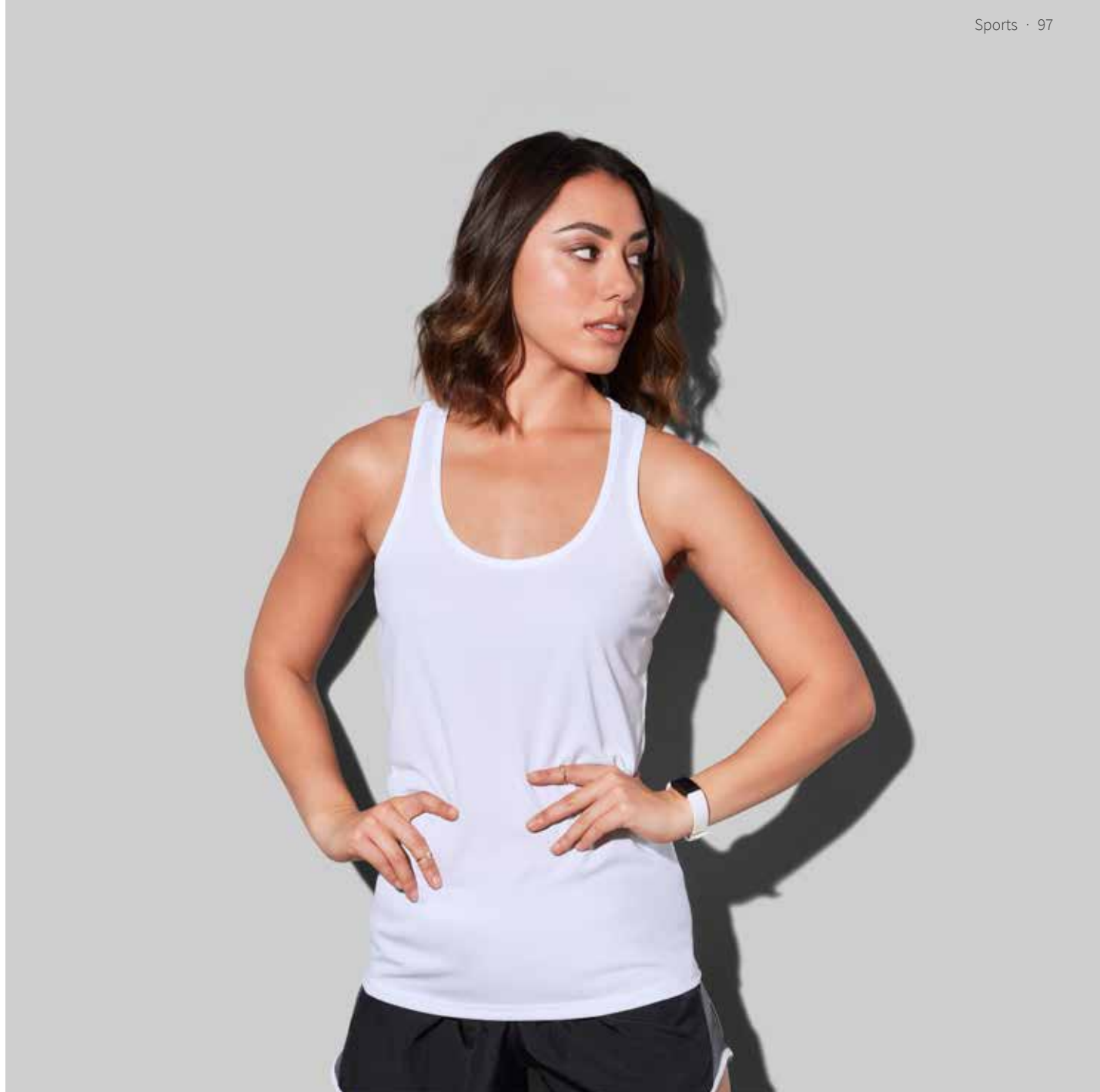
ST8540 WOMEN  
**Active 140 Tank**

S - M - L - XL

100% ACTIVE-DRY® polyester;  
bird-eyelet mesh

- ✓ LIGHT AND STRETCHY MESH FABRIC
- ✓ GREAT MOISTURE-CONTROL
- ✓ NO LABEL IN COLLAR

**140** G/M<sup>2</sup> | REGULAR



White



Black Opal



ST8420 MEN

## Active 140 Long Sleeve

S - M - L - XL - XXL

100% ACTIVE-DRY® polyester;  
bird-eyelet mesh

- ✓ LIGHT AND STRETCHY MESH FABRIC
- ✓ RAGLAN SLEEVES
- ✓ GREAT MOISTURE-CONTROL
- ✓ NO LABEL IN COLLAR

**140** G/M<sup>2</sup> | REGULAR



White



Black Opal



Marina Blue



Crimson Red

ST8450 MEN  
**Active 140 Polo**

S - M - L - XL - XXL

100% ACTIVE-DRY® polyester;  
bird-eyelet mesh

- ✓ LIGHT AND STRETCHY MESH FABRIC
- ✓ RIB COLLAR
- ✓ GREAT MOISTURE-CONTROL
- ✓ NO LABEL IN COLLAR

**140** G/M<sup>2</sup> | REGULAR



White



Black Opal



Marina Blue



Crimson Red

**MODERN  
HEATHERED  
LOOK**

*A modern sports  
shirt with great  
breathability  
and quick-drying  
properties.*



ST8020 MEN & ST8120 WOMEN

## Intense Tech

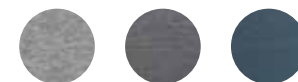
MEN: **S - M - L - XL - XXL**

WOMEN: **S - M - L - XL**

100% ACTIVE-DRY® polyester; jacquard

- ✓ HEATHERED LOOK
- ✓ BREATHABLE AND QUICK-DRYING
- ✓ NO LABEL IN COLLAR

**140** G/M<sup>2</sup> | FITTED



Grey Heather Anthra Heather Marina Heather



**ST8600** MEN & **ST8700** WOMEN

## Cotton Touch

MEN: **S - M - L - XL - XXL**

WOMEN: **S - M - L - XL**

100% ACTIVE-DRY® polyester;  
single jersey “cotton touch”

- ✓ FINE AND SMOOTH FABRIC  
THAT FEELS LIKE REAL COTTON
- ✓ MOISTURE-WICKING AND BREATHABLE
- ✓ NO LABEL IN COLLAR

**160**<sub>G/M<sup>2</sup></sub> | REGULAR



White



Black Opal



Crimson Red



Cyber Yellow



Kiwi Green



Cyber Orange

MEN

ST8050 MEN  
**Piqué Polo**

S - M - L - XL - XXL

100% ACTIVE-DRY® polyester;  
 true piqué

- ✓ HIGH-QUALITY FUNCTIONAL  
 PIQUÉ FABRIC
- ✓ RIB COLLAR AND CUFFS
- ✓ WASHABLE AT 60°C
- ✓ NO LABEL IN COLLAR

**180** G/M<sup>2</sup> | REGULAR



**THIS POLO  
 CAN GET HOT**

*This polo shirt  
 can be washed  
 at 60° C.*



White



Black Opal



Slate Grey



Pepper Red



Bahama Green



ST8330 WOMEN  
**Sports Bra**

S - M - L - XL

90% nylon, 10% elastane

- ✓ OPTIMUM SUPPORT FOR HIGH-INTENSITY WORKOUTS
- ✓ REMOVABLE CUP PADDING
- ✓ STRETCHY, DOUBLE-LAYER NYLON FABRIC
- ✓ SEAMLESS CONSTRUCTION

**300** G/M<sup>2</sup> | FITTED

ST8320 WOMEN  
**3/4 Sports Tights**

S - M - L - XL

90% nylon, 10% elastane

- ✓ STRETCHY AND DURABLE NYLON FABRIC
- ✓ SPORTY CONTRAST STRIPES ON THE SIDES
- ✓ WIDE RIB WAISTBAND

**300** G/M<sup>2</sup> | FITTED



Black Opal





Black Opal



Grey Steel

ST8990 WOMEN

## Seamless Tights

S - M - L - XL

82% nylon, 18% elastane

- ✓ DURABLE NYLON FABRIC
- ✓ HIGH ELASTICITY
- ✓ BREATHABLE AND QUICK-DRYING

300 G/M<sup>2</sup> | FITTED

RECYCLED



ST8830 MEN & ST8930 WOMEN

## Recycled Sports-T Move

MEN: **S - M - L - XL - XXL**

WOMEN: **S - M - L - XL**

100% ACTIVE-DRY® polyester  
(50% recycled)

- ✓ ECO-FRIENDLY MATERIAL MADE FROM 4 RECYCLED PLASTIC BOTTLES
- ✓ VERY LIGHT FABRIC WITH HEATHERED LOOK
- ✓ ROUNDED HEM AND OVERCUT SLEEVES FOR WOMEN
- ✓ NO LABEL IN COLLAR
- ✓ TEAR-AWAY LABEL IN SIDE SEAM

**125**<sub>G/M<sup>2</sup></sub> | REGULAR



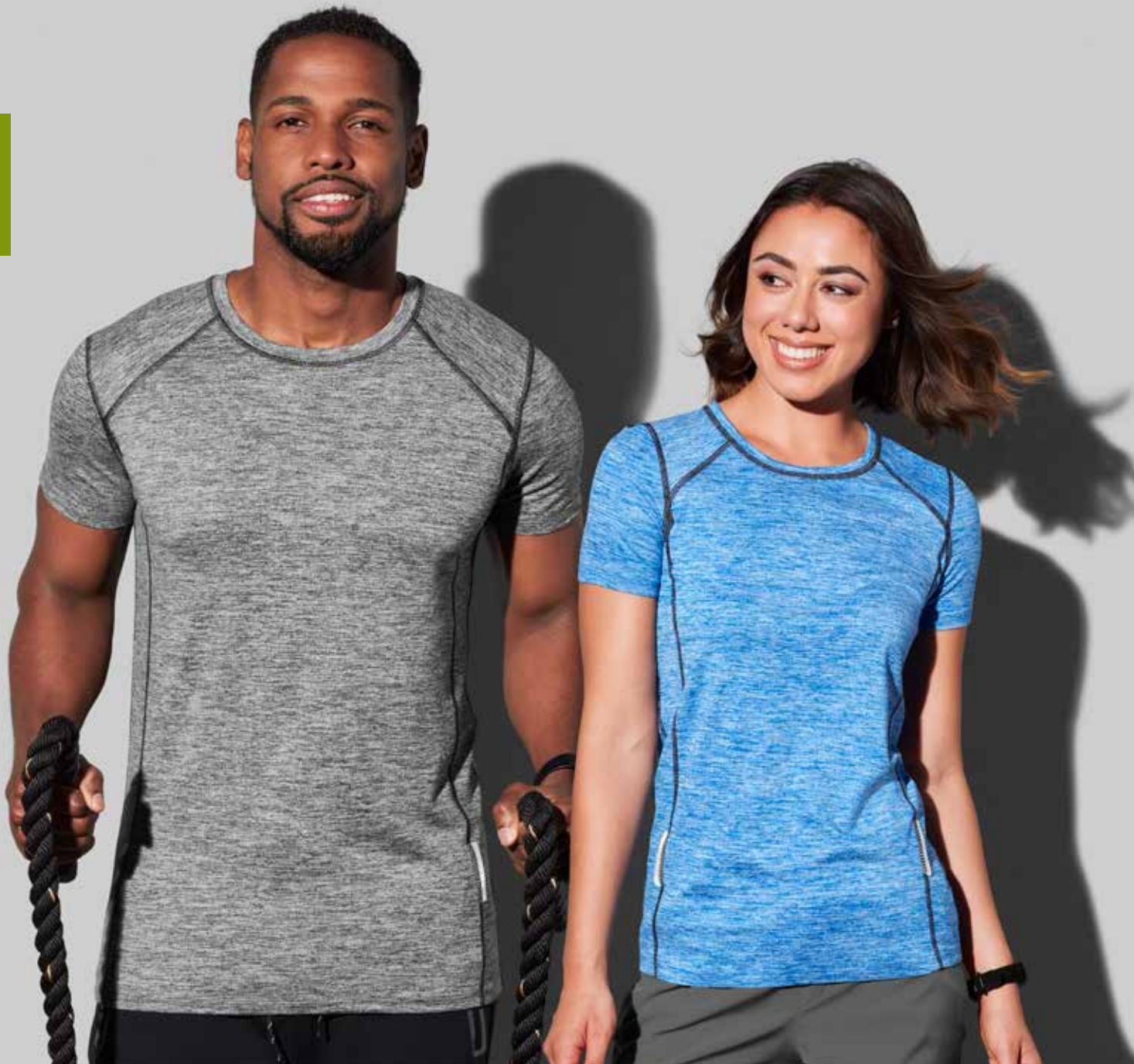
Grey Heather Denim Heather Coral Heather



**RECYCLED &  
BREATHABLE**

*Eco-friendly sports  
shirts with great  
moisture-control.*

RECYCLED



ST8840 MEN & ST8940 WOMEN

## Recycled Sports-T Reflect

MEN: **S - M - L - XL - XXL**

WOMEN: **S - M - L - XL**

90% ACTIVE-DRY® polyester  
(50% recycled), 10% elastane

- ✓ ECO-FRIENDLY MATERIAL MADE FROM 4 RECYCLED PLASTIC BOTTLES
- ✓ SUPER SOFT FABRIC WITH GREAT MOISTURE-CONTROL
- ✓ REFLECTING TAPE ON FRONT AND BACK
- ✓ NO LABEL IN COLLAR
- ✓ TEAR-AWAY LABEL IN SIDE SEAM

**190**<sub>G/M<sup>2</sup></sub> | FITTED



Grey Heather

Blue Heather



ST8850 MEN & ST8950 WOMEN

## Recycled Sports-T Race

MEN: **S - M - L - XL - XXL**

WOMEN: **S - M - L - XL**

90% ACTIVE-DRY® polyester  
(50% recycled), 10% elastane

✓ ECO-FRIENDLY MATERIAL MADE  
FROM 4 RECYCLED PLASTIC BOTTLES

✓ VERY STRETCHY AND AIRY MESH  
FABRIC

✓ HEATHERED LOOK  
WITH CONTRAST ELEMENTS

✓ NO LABEL IN COLLAR

✓ TEAR-AWAY LABEL IN SIDE SEAM

**160** G/M<sup>2</sup> | FITTED



Grey Heather



Denim Heather

RECYCLED



ST5840 MEN & ST5940 WOMEN

## Recycled Scuba Jacket

MEN: **S - M - L - XL - XXL**

WOMEN: **XS - S - M - L - XL**

Black Opal: 94% polyester  
(24% recycled), 6% elastane

Anthra Heather: 81% polyester  
(28% recycled), 13% viscose,  
6% elastane

- ✓ ECO-FRIENDLY MATERIAL MADE FROM 8 RECYCLED PLASTIC BOTTLES
- ✓ STRETCHY AND BREATHABLE
- ✓ NO LABEL IN COLLAR
- ✓ TEAR-AWAY LABEL IN SIDE SEAM

**300**<sub>G/M<sup>2</sup></sub> | REGULAR



Black Opal



Anthra Heather



**HIGH-END AND  
RECYCLED**

*These modern  
sporty jackets are  
made from recycled  
plastic bottles.*

**Fleece Half-Zip**  
*for men, p. 116*





stedman.eu

## Fleece

Our extensive fleece range has you covered for extra warmth during your outdoor adventures. From basic jackets and vests to modern knit fleece jackets for a more sophisticated look.



**ST5030 MEN & ST5100 WOMEN**  
**Fleece Jacket**

MEN: **S - M - L - XL - XXL - 3XL**  
WOMEN: **XS - S - M - L - XL - XXL**

100% polyester; micro fleece  
with anti-pilling treatment

- ✓ WARM AND SOFT  
WITH GREAT HEAT INSULATION
- ✓ BOTH SIDES BRUSHED
- ✓ NO LABEL IN COLLAR

Men's size 3XL only in: Black Opal & Blue Midnight  
Women's sizes XS & XXL only in: Black Opal, Blue Midnight &  
Scarlet Red

**220**<sub>G/M<sup>2</sup></sub> | REGULAR



Black Opal Blue Midnight Scarlet Red Grey Steel

ST5010 MEN & ST5110 WOMEN

## Fleece Vest

MEN: **S - M - L - XL - XXL**

WOMEN: **S - M - L - XL**

100% polyester; micro fleece  
with anti-pilling treatment

✓ WARM AND SOFT  
WITH GREAT HEAT INSULATION

✓ BOTH SIDES BRUSHED

✓ NO LABEL IN COLLAR

**220** G/M<sup>2</sup> | REGULAR



Black Opal



Blue Midnight



Scarlet Red



Grey Steel



Kiwi Green

**THIS FLEECE  
IS LIGHTER**

*This is our lightweight  
fleece. It is the perfect  
mid-season style.*



**ST5020 MEN  
Fleece Half-Zip**

**S - M - L - XL - XXL**

100% polyester; micro fleece  
with anti-pilling treatment

- ✓ BRUSHED OUTSIDE
- ✓ LIGHTWEIGHT, WARM AND SOFT  
WITH GREAT HEAT INSULATION
- ✓ NO LABEL IN COLLAR

**170** G/M<sup>2</sup> | REGULAR



Black Opal



Grey Steel



Scarlet Red

ST5080 MEN  
**Hooded Fleece Jacket**

S - M - L - XL - XXL

100% polyester; micro fleece  
with anti-pilling treatment

✓ WARM AND SOFT  
WITH GREAT HEAT INSULATION

✓ BOTH SIDES BRUSHED

✓ NO LABEL IN COLLAR

**220** G/M<sup>2</sup> | REGULAR



Black Opal



Grey Steel



Blue Midnight



ST5090 MEN & ST5190 WOMEN  
**Striped Fleece Jacket**

MEN: **S - M - L - XL - XXL**

WOMEN: **S - M - L - XL**

100% polyester; knit fleece  
with anti-pilling treatment

- ✓ WARM AND STRETCHY KNIT FABRIC
- ✓ BRUSHED INSIDE
- ✓ NO LABEL IN COLLAR

**280**<sub>G/M<sup>2</sup></sub> | REGULAR



Grey Steel



Brilliant Blue

ST5850 MEN & ST5950 WOMEN  
**Knit Fleece Jacket**

MEN: **S - M - L - XL - XXL**  
 WOMEN: **S - M - L - XL**

100% polyester; knit fleece  
 with anti-pilling treatment

- ✓ WARM AND STRETCHY KNIT FABRIC
- ✓ BRUSHED INSIDE
- ✓ NO LABEL IN COLLAR

**280** G/M<sup>2</sup> | REGULAR



Light Grey  
Melange



Dark Grey  
Melange



Marina Blue  
Melange



Blue Melange



Purple Melange

WOMEN



ST5060 MEN

## Melange Fleece Jacket

S - M - L - XL - XXL

100% polyester; melange fleece  
with anti-pilling treatment

- ✓ BOTH SIDES BRUSHED
- ✓ WARM AND VELVETY FABRIC  
WITH GREAT HEAT INSULATION
- ✓ NO LABEL IN COLLAR

**310** G/M<sup>2</sup> | REGULAR



Pumpkin  
Melange



Olive  
Melange



ST5040 MEN  
**Power Fleece Jacket**

S - M - L - XL - XXL

100% polyester; fleece  
with anti-pilling treatment

✓ VERY SOFT FABRIC  
WITH GREAT HEAT INSULATION

✓ BOTH SIDES BRUSHED

✓ NO LABEL IN COLLAR

**280**<sub>G/M<sup>2</sup></sub> | REGULAR



Grey Heather



Anthra Heather



**Lux Padded Jacket**  
*for men & women, p. 126*

**stedman.eu**

## **Jackets**

We are expanding our Stedman® Lux range into jackets and vests! Discover our brand-new Lux Padded Jackets, Padded Vests and Softshell Jackets on pages 124 - 129!

NEW STYLE



ST5440 MEN & ST5540 WOMEN

## Lux Softshell Jacket

MEN: S - M - L - XL - XXL - 3XL - 4XL - 5XL

WOMEN: XS - S - M - L - XL - XXL - 3XL

100% polyester

### 3-LAYER FABRIC

Outside: knitted softshell – water-repellent

Inner layer: membrane – breathable

Inside: micro fleece – soft and warm

- ✓ DETACHABLE HOOD
- ✓ HIGH-QUALITY SBS ZIPPERS
- ✓ INSIDE POCKET ON THE FRONT RIGHT
- ✓ WATER-REPELLENT AND BREATHABLE 3-LAYER FABRIC
- ✓ FLUORINE AND PFC FREE
- ✓ PREMIUM WOVEN SIZE LABEL IN THE COLLAR
- ✓ TEAR-AWAY LABEL IN THE SIDE SEAM

Men's sizes 4-5XL and women's size 3XL only in: Black Opal

**250**<sub>G/M<sup>2</sup></sub> | REGULAR



Black Opal



Blue Midnight



### **NEW STYLE!**

*Our new Lux Softshell Jackets keep you cosy and dry with their functional 3-layer fabric: soft and warm micro fleece on the inside, a breathable membrane in the middle and a water-repellent knitted softshell layer for a modern look. They come with a detachable, adjustable hood and inside pocket. The half-moon in the back centre is great for customisation.*



NEW STYLE

ST5420 MEN & ST5520 WOMEN

## Lux Padded Jacket

MEN: **S - M - L - XL - XXL - 3XL - 4XL - 5XL**

WOMEN: **XS - S - M - L - XL - XXL - 3XL**

shell and lining: 100% nylon;

filling: 100% polyester

- ✓ EASY EMBROIDERY ACCESS TO FRONT LEFT PANEL
- ✓ HALF-MOON IN BACK CENTRE FOR CUSTOMISATION
- ✓ HIGH-QUALITY SBS ZIPPERS
- ✓ INSIDE POCKET ON THE FRONT RIGHT
- ✓ STOW-AWAY FUNCTION
- ✓ FLUORINE AND PFC FREE
- ✓ PREMIUM WOVEN SIZE LABEL IN THE COLLAR
- ✓ TEAR-AWAY LABEL IN THE SIDE SEAM

Men's sizes 4-5XL and women's size 3XL only in: Black Opal

REGULAR



VEST p. 129



Black Opal



Blue Midnight



### **NEW STYLE!**

*Our new Lux Padded Jackets can be taken anywhere due to their stow-away function. They fold down super easily into their own inside pocket.*

*The adjustable bottom hem and hood with collar offer optimal warmth. The front left panel is easily accessible from the inside for embroidery. The half-moon in the back centre is great for customisation as well.*

## **NEW STYLE!**

*Our new Lux Padded Vests are great for any outdoor activity. Just like the Lux Padded Jackets, they fold down into their own inside pocket. The adjustable bottom hem and stand-up collar offer optimal warmth. The front left panel is easily accessible from the inside for embroidery. The half-moon in the back centre is great for customisation as well.*





ST5430 MEN & ST5530 WOMEN

## Lux Padded Vest

MEN: S - M - L - XL - XXL - 3XL - 4XL - 5XL

WOMEN: XS - S - M - L - XL - XXL - 3XL

shell and lining: 100% nylon;  
filling: 100% polyester

- ✓ EASY EMBROIDERY ACCESS  
TO FRONT LEFT PANEL
- ✓ HALF-MOON IN BACK CENTRE FOR  
CUSTOMISATION
- ✓ HIGH-QUALITY SBS ZIPPERS
- ✓ INSIDE POCKET ON THE FRONT RIGHT
  - ✓ STOW-AWAY FUNCTION
  - ✓ FLUORINE AND PFC FREE
- ✓ PREMIUM WOVEN SIZE LABEL  
IN THE COLLAR
- ✓ TEAR-AWAY LABEL IN THE SIDE SEAM

Men's sizes 4-5XL and women's size 3XL only in: Black Opal

REGULAR



JACKET p. 126



Black Opal



Blue Midnight



**Power Fleece Jacket**  
*for women, p. 137*

[stedman.eu/lastchance](https://stedman.eu/lastchance)

## **Last Chance**

We offer a 50% discount on selected styles and colours.  
Hurry and get your “last chance”- styles while stocks last!



ST9850 MEN  
**David Oversized**

S - M - L - XL - XXL

65% polyester, 35% viscose;  
melange, single jersey

SUPER SOFT AND SILKY FABRIC  
WITH VISCOSE · RAW EDGE COLLAR · MODERN  
OVERSIZED FIT · NO LABEL IN COLLAR

**140** G/M<sup>2</sup> | OVERSIZED



Vintage Brown Vintage Blue Vintage Rose



ST9950 WOMEN  
**Daisy Oversized**

S - M - L - XL

65% polyester, 35% viscose;  
melange, single jersey

SUPER SOFT AND SILKY FABRIC  
WITH VISCOSE · RAW EDGE COLLAR · MODERN  
OVERSIZED FIT · NO LABEL IN COLLAR

**140** G/M<sup>2</sup> | OVERSIZED



Vintage Grey Vintage Blue Vintage Rose



ST9110 WOMEN  
**Finest Cotton-T**

S - M - L - XL

100% ring-spun combed cotton;  
single jersey

FINE, SOFT AND STRETCHY COMBED  
COTTON · ROLLED SELF-FABRIC COLLAR ·  
NO LABEL IN COLLAR

**105** G/M<sup>2</sup> | FITTED



Slate Grey



ST9700 WOMEN

## Claire Crew Neck

XS - S - M - L - XL

95% ring-spun combed cotton,  
5% elastane; single jersey "full feeder"

STRETCHY, COMBED COTTON  
WITH ELASTANE · FITTED SHAPE ·  
NO LABEL IN COLLAR

**170** G/M<sup>2</sup> | FITTED



Powder Grey    Soft Grey



ST9020 MEN

## Morgan Crew Neck

S - M - L - XL

100% ring-spun cotton;  
single jersey

PREMIUM RING-SPUN COTTON ·  
FITTED CUT WITH RIB COLLAR · SIDE  
SEAMS · NO LABEL IN COLLAR

**160** G/M<sup>2</sup> | FITTED



Cream White    Pumpkin



ST9120 WOMEN

## Megan Crew Neck

S - M - L - XL

100% ring-spun combed cotton;  
single jersey

HIGH-QUALITY COMBED COTTON ·  
FITTED CUT WITH SLIM RIB COLLAR ·  
NO LABEL IN COLLAR

**145** G/M<sup>2</sup> | FITTED



Pumpkin    Crimson Red



**ST9130** WOMEN  
**Megan V-neck**

**S - M - L - XL**

100% ring-spun combed cotton;  
single jersey

HIGH-QUALITY COMBED COTTON ·  
FITTED CUT WITH SLIM RIB COLLAR ·  
NO LABEL IN COLLAR

**145** G/M<sup>2</sup> | **FITTED**



Crimson Red



**ST9410** MEN  
**Shawn Slub V-neck**

**S - M - L - XL - XXL**

100% ring-spun cotton, slub yarn;  
single jersey

SLUB YARN FOR A TEXTURISED  
LOOK · SLIM, MODERN COLLAR ·  
NO LABEL IN COLLAR

**140** G/M<sup>2</sup> | **REGULAR**



Crimson Red Bahama Green True Blue



**ST9510** WOMEN  
**Sharon Slub V-neck**

**S - M - L - XL**

100% ring-spun cotton, slub yarn;  
single jersey

SLUB YARN FOR A TEXTURISED  
LOOK · SLIM, MODERN COLLAR ·  
NO LABEL IN COLLAR

**140** G/M<sup>2</sup> | **REGULAR**



Black Opal Crimson Red Bahama Green



# LAST CHANCE

50% DISCOUNT!

By the way, you can also find discontinued styles at a great discount in our Stedman® online outlet at: [stedman.eu/outlet](https://stedman.eu/outlet)

ST9010 MEN

## Ben V-neck

S - M - L - XL - XXL

100% ring-spun cotton; single jersey  
(Grey Heather: 85% cotton, 15% viscose)

PREMIUM RING-SPUN COTTON ·  
REGULAR CUT WITH RIB COLLAR ·  
NO LABEL IN COLLAR

**160** G/M<sup>2</sup> | REGULAR



Grey Heather   Deep Lilac   Crimson Red   Daisy Yellow   Green Flash

ST8130 WOMEN

## Active 140 Team Raglan

S - M - L - XL

100% ACTIVE-DRY® polyester;  
sleek mesh

LIGHT AND STRETCHY MESH FABRIC WITH  
SLEEK SURFACE · RAGLAN SLEEVES · GREAT  
MOISTURE-CONTROL · NO LABEL IN COLLAR

**140** G/M<sup>2</sup> | REGULAR



Bahama Green



For more information on our discounted styles please visit our website:

[stedman.eu/sale](https://stedman.eu/sale)



ST9060 MEN

## Harper Polo

S - M - L - XL - XXL

100% ring-spun combed cotton;  
true piqué

PREMIUM, COMBED COTTON  
PIQUÉ · RIB COLLAR · NO LABEL  
IN COLLAR

**180**<sup>G/M<sup>2</sup></sup> | REGULAR



Lavender Purple





ST9150 WOMEN  
**Hanna Polo**

S - M - L - XL

100% ring-spun combed cotton;  
true piqué

PREMIUM, COMBED COTTON  
PIQUÉ · RIB COLLAR · NO LABEL  
IN COLLAR

**170** G/M<sup>2</sup> | REGULAR



Frosted Blue



ST3100 WOMEN  
**Polo**

S - M - L - XL

100% ring-spun cotton; single jersey,  
piqué look

CLASSIC BESTSELLER · SOFT  
SINGLE JERSEY COTTON WITH  
PIQUÉ LOOK · RIB COLLAR

**170** G/M<sup>2</sup> | REGULAR



Bright Lime



ST5120 WOMEN  
**Power Fleece Jacket**

S - M - L - XL

100% polyester; fleece  
with anti-pilling treatment

VERY SOFT FABRIC WITH GREAT  
HEAT INSULATION · BOTH SIDES  
BRUSHED · NO LABEL IN COLLAR

**280** G/M<sup>2</sup> | REGULAR



Grey Heather

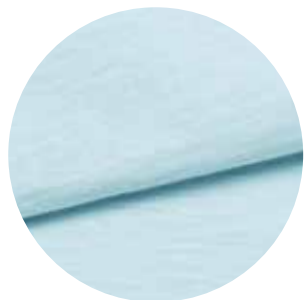


Anthra Heather

[stedman.eu/fabrics](https://stedman.eu/fabrics)

## Fabrics

*High-quality fabrics with unique properties and a great wearing comfort.*



### RING-SPUN COTTON

Cotton is a soft, absorbent and breathable natural fibre, making it the perfect choice for clothing worn close to the skin. T-shirts made of cotton fabric are very airy, durable and easy to clean. For our cotton styles, we only use high-quality ring-spun cotton. Ring-spun yarn is made by twisting and thinning the cotton strands to make a very fine, strong, soft rope of cotton fibres. Ring-spun cotton T-shirts are significantly softer, more durable and last longer than their regular counterparts.



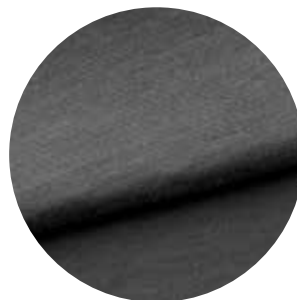
### ORGANIC COTTON

Organic cotton is grown without the use of pesticides, herbicides or other chemical fertilizers and is therefore particularly gentle on people and nature. Our organic styles are made of 100% OCS-certified organic ring-spun cotton. Environmentally friendly, fashionable and absolutely soft on the skin. These styles offer all the advantages of a classic promotional T-shirt and at the same time the good feeling of having made a small contribution to environmental protection.



### VISCOSE

Viscose is a high-quality material made from the natural raw material cellulose. The fibre is very soft to the touch, moisture-absorbent and very breathable. It can be both glossy and matt and thus take on the look of wool, silk or cotton. T-shirts with a viscose share drape fluidly around your body, creating a premium wearing comfort as well as an elegant, flattering silhouette.



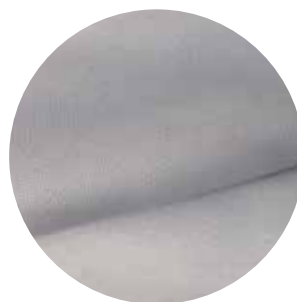
### ELASTANE

Elastane is a durable, highly elastic material that returns to its original shape after each stretch. For our Stedman® collection we use the “full feeder” technology, allowing elastane to evenly spread over the entire surface of the fabric. This leads to a high wearing comfort and a smooth surface that is excellent for printing.



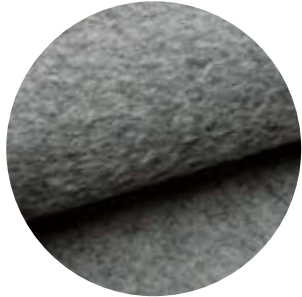
### RECYCLED POLYESTER

Our recycled polyester offers the same high-quality characteristics as conventional polyester but with a smaller environmental footprint. The production of recycled polyester requires far less energy, causes significantly less CO<sub>2</sub> emissions, and helps keeping plastic waste from going to landfills and our oceans. In the Stedman® collection you can find recycled polyester in sports shirts, sports jackets, sweatshirts, sweatpants and fleece jackets.



### ACTIVE-DRY° POLYESTER

Stedman®'s ACTIVE-DRY° polyester is a quick-drying fabric with great moisture-control that is soft to the touch and very elastic. Therefore it is perfectly suitable for sports and functional clothing. The airy fabrics are very moisture-wicking and provide a pleasant feeling even during intensive workouts. T-shirts made of ACTIVE-DRY° polyester offer not only great wearing comfort, but also ideal conditions for various textile finishings.



## FLEECE

Fleece jackets are popular and indispensable companions in everyday life or for outdoor activities, as they provide strong insulation and can absorb and release moisture very well. They are light, breathable and keep you pleasantly warm even in cooler weather. There are many different kinds of fleece fabrics. The Stedman® collection includes Micro Fleece, Knit Fleece, Melange Fleece and Power Fleece.



## NYLON

Nylon fabrics are smooth, moisture-wicking and very durable, making them the perfect choice for athletic and outdoor clothing. Nylon is one of the lightest textile fibres and at the same time one of the strongest. Thanks to its high elasticity and moisture-wicking properties, nylon textiles offer great wearing comfort and excellent freedom of movement. In the Stedman® collection you can find nylon in sports tights, sports bras, padded jackets and vests.



## SOFTSHELL

The outstanding features of our softshell styles are their light weight and the combination of three layers in one garment. Softshell combines an outer layer to protect against wind and weather with a breathable membrane and soft micro fleece on the inside. Therefore, softshell products are wind-, water- and dirt-repellent. The pleasantly stretchy material ensures a high level of wearing comfort.



**Lux Softshell Jacket**  
for men, p. 124

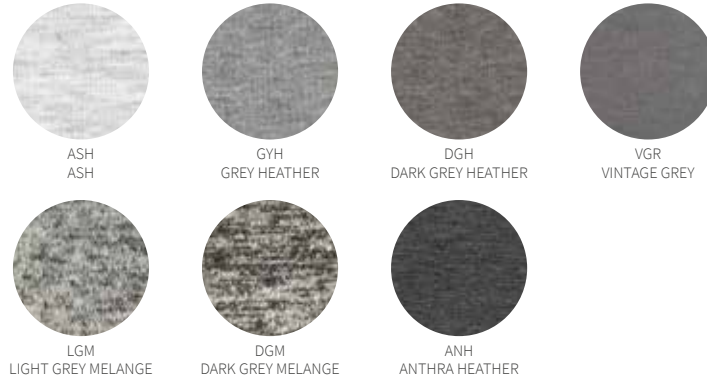
stedman.eu  
**Colours**

To easily sort all products by colour, please visit [stedman.eu](http://stedman.eu)

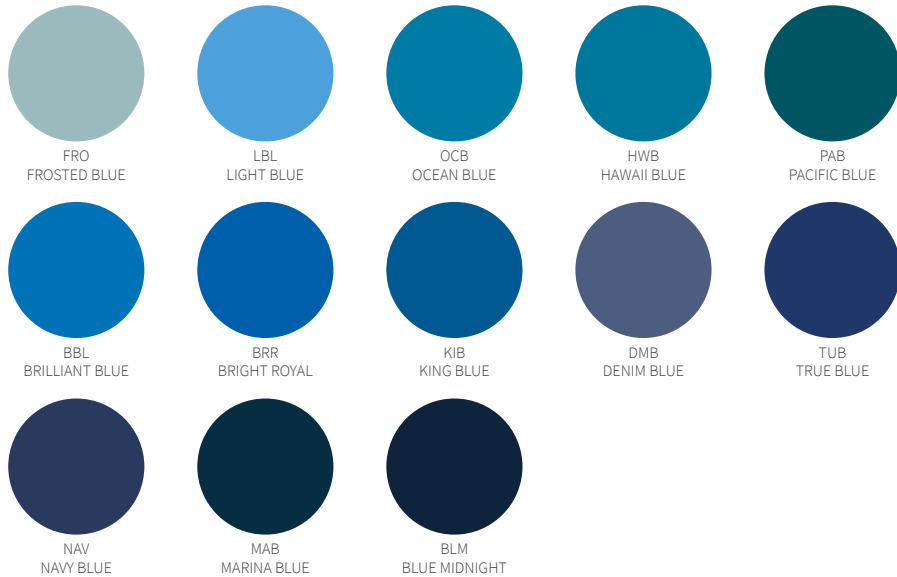
**White, Grey & Black** (solid-coloured)



**Grey** (heathered)



**Blue** (solid-coloured)



**Blue** (heathered)



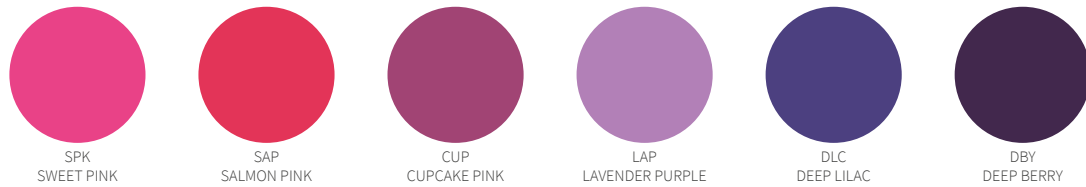
**Orange, Red & Brown (solid-coloured)**



**Orange & Brown (heathered)**



**Pink & Purple (solid-coloured)**



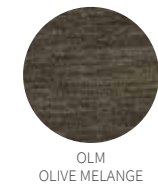
**Pink & Purple (heathered)**



**Yellow & Green (solid-coloured)**



**Green (heathered)**



[stedman.eu/size-charts](https://stedman.eu/size-charts)

## Sizes

The stated sizes are subject to standard tolerances and have only been stated for orientation purposes. Some articles possess a tighter cut to emphasize the shape of the body (indicated as 'Fitted' in product descriptions). Please order one size larger if you require a looser fit. All sizes are 'to fit' sizes.



**Lux Softshell Jacket**  
*for women, p. 124*

MEN	EU	DE, FR, ES, PT	IT	UK	BODY HEIGHT		CHEST		WAIST		HIPS	
					cm	inches	cm	inches	cm	inches	cm	inches
	XS	42-44	32-34	32-34	32-34	172-175	67.5-69	78-85	30.5-33.5	66-73	26-28.5	87-92
S	44-46	34-36	34-36	34-36	173-182	68-71.5	86-93	34-36.5	74-81	29-32	93-98	36.5-38.5
M	48-50	38-40	38-40	38-40	175-184	69-72.5	94-99	37-39	82-89	32.5-35	99-104	39-41
L	52-54	42-44	42-44	42-44	177-186	69.5-73	100-105	39.5-41.5	90-97	35.5-38	105-110	41.5-43.5
XL	56-58	46-48	46-48	46-48	179-188	70.5-74	106-111	41.5-43.5	98-105	38.5-41.5	111-116	43.5-45.5
XXL	60-62	50-52	50-52	50-52	181-190	71.5-75	112-117	44-46	106-113	41.5-44.5	117-122	46-48
3XL	64-66	54-56	54-56	54-56	185-191	73-75	118-123	46.5-48.5	114-121	45-47.5	123-128	48.5-50.5
4XL	68-70	58-60	58-60	58-60	185-191	73-75	124-129	49-51	122-129	48-51	129-132	51-52
5XL	72	62	62	62	185-191	73-75	130-135	51-53	130-135	51-53	133-138	52.5-54.5

WOMEN	EU	DE	FR, ES, PT	IT	UK	BODY HEIGHT		CHEST		WAIST		HIPS	
						cm	inches	cm	inches	cm	inches	cm	inches
	XS	32-34	34-36	34-36	36-38	6-8	165-172	65-67.5	74-84	29-33	58-65	23-25.5	85-90
S	36-38	38-40	38-40	40-42	10-12	165-172	65-67.5	85-92	33.5-36	66-73	26-28.5	91-96	36-38
M	40-42	42-44	42-44	44-46	14-16	165-172	65-67.5	93-97	36.5-38	74-81	29-32	97-102	38-40
L	44-46	46-48	46-48	48-50	18-20	165-172	65-67.5	98-107	38.5-42	82-90	32.5-35.5	103-110	40.5-43.5
XL	48-50	50-52	52-54	52-54	22-24	165-172	65-67.5	108-117	42.5-46	91-102	36-40	111-118	43.5-46.5
XXL	50-52	52-54	54-56	54-56	24-26	165-172	65-67.5	118-123	46.5-48.5	103-114	40.5-45	119-124	47-49
3XL	54-56	56-58	58-60	58-60	28-30	165-172	65-67.5	124-134	49-53	115-126	45.5-49.5	125-135	49-53
4XL	58-60	60-62	62-64	62-64	32-34	165-172	65-67.5	135-145	53-57	127-136	50-53.5	136-146	53.5-57.5

CHILDREN	EU	AGE	BODY HEIGHT		CHEST		WAIST		HIPS	
			cm	inches	cm	inches	cm	inches	cm	inches
	3XS	1-2	86-92	34-36	53-54	21-21.5	49-52	19.5-20.5	52-56	20.5-22
XXS	3-4	98-104	38.5-41	55-56	21.5-22	52-53	20.5-21	57-60	22.5-23.5	
XS	5-6	110-116	43.5-45.5	57-58	22.5-23	54-55	21.5	61-63	24-25	
S	7-8	122-128	48-50.5	61-64	24-25	56.5-58	22-23	66-69	26-27	
M	9-10	134-140	53-55	67-70	26.5-27.5	59-61	23-24	72-75	28.5-29.5	
L	11-12	146-152	57.5-60	73-76	28.5-30	62-65	24.5-25.5	78-81	30.5-32	
XL	12-13	158-164	62-64.5	79-82	31-32.5	65-69	25.5-27	85-87	33.5-34.5	

UNISEX	EU	DE		FR, ES, PT		IT		UK	
		WOMEN	MEN	WOMEN	MEN	WOMEN	MEN	WOMEN	MEN
	XXS	32-34	-	34-36	-	36-38	-	6-8	-
XS	36-38	42-44	38-40	42-44	40-42	30-32	10-12	30-32	
S	40-42	44-46	42-44	44-46	44-46	34-36	14-16	34-36	
M	44-46	48-50	46-48	48-50	48-50	38-40	18-20	38-40	
L	48-50	52-54	50-52	52-54	52-54	42-44	22-24	42-44	
XL	50-52	56-58	52-54	56-58	54-56	46-48	24-26	46-48	
XXL	54-56	60-62	56-58	60-62	58-60	50-52	28-30	50-52	
3XL	58-60	64-66	60-62	64-66	62-64	54-56	32-34	54-56	
4XL	-	68-70	-	68-70	-	58-60	-	58-60	
5XL	-	72	-	72	-	62	-	62	

[stedman.eu/printability](https://stedman.eu/printability)

## Print & Embroidery

When it comes to our garments, style, function and comfort are not the only things that matter to us. We pay particular attention to the most diverse methods of printability so that your various decoration techniques can be applied to our products in outstanding quality. Our fabrics offer an even and smooth surface, which enables an optimal printing result. To meet the highest demands, we are constantly working to adapt our products to the latest printing techniques. To do this, we test each and every product together with our print test team. To continuously optimise our products, we are constantly looking for printability testers.

You are welcome to join our print test team. Simply fill out the registration form at: [stedman.eu/print-tester](https://stedman.eu/print-tester)



*For more information on  
print & embroidery  
please visit our website:*

[stedman.eu/printability](https://stedman.eu/printability)

**Polo**  
*for women, p. 68*





## Screen printing

Screen printing is the most widely used printing process in the promotional textile industry. Here, the printing ink is pressed through a stencil onto the textile. We divide screen printing into 3 types:

### Plastisol screen printing

The most popular colours in textile screen printing are plastisol colours. The advantages of plastisol inks are, among other things, their high opacity, long durability after numerous washings and the implementation of special colours.

☑ *Plastisol printing requires a smooth surface, so we recommend all our products except fleece & padded articles.*

### Water-based screen printing

The big advantage of this printing technique is the feel. Prints with water-based screen printing ink are very smooth. After washing the printed shirt you will hardly feel any difference between the printed and the unprinted area.

☑ *We recommend this environmentally friendly and water-based screen printing on 100% cotton, our popular cotton-elastane shirts and on all our sweat products.*

### Discharge

For discharge printing, the ink is mixed with a bleaching agent, which brightens the colour of the textile. Due to the brightened material, the ink has a higher opacity and the printing layer can be kept very thin. Discharge printing offers a particularly high-quality feel, as the ink is hardly noticeable.

☑ *The discharge process requires the same fabric compositions as water-based screen printing, but not every colour is suitable.*

## Embroidery

**Embroidery with needle and thread can be a finishing option for almost all textiles.**

☑ *We can especially recommend all our jackets, whether fleece, softshell or nylon. But also our sweat products are perfect for embroidery. In general, we can recommend all fabrics that weigh more than 145 g/m<sup>2</sup>.*

## Transfer

With all transfer techniques, the design is applied to a carrier and then pressed onto the textile. Under transfer we have summarised various types of finished transfers (Aqua, Nylon...) as well as Flex, Flock & Sublimation.

☑ *We recommend transfer on all our products.*

### Sublimation printing

In sublimation printing, a special ink is used that turns into gas when heat is applied and can thereby be absorbed into the fibres of the textile. Sublimation printing offers particularly long durability and a high-quality feel.

☑ *A polyester layer is required for this, which is why we can recommend all our polyester sports shirts. As sublimation printing does not provide sufficient opacity on dark textiles, we only recommend light colours for sublimation.*

## Direct to garment

**DTG (direct to garment) printing is one of the latest printing techniques and is becoming increasingly popular in the textile printing industry. The design is applied directly to the textile fabric using an inkjet process and is then fixed using heat.**

☑ *We recommend DTG on 100% cotton, our popular cotton-elastane shirts and on all our sweat products.*

## Direct to film

**Direct to film (DTF) designs are printed onto a film which is pressed on the garment after applying and melting a powder to the printed film. Fabrics suitable for transfer can be used for DTF as well.**

☑ *We recommend DTF on all our products.*

[stedman.eu/complete-collection](https://stedman.eu/complete-collection)

## Index

The Stedman® collection 2023 by article number.  
New styles are highlighted in blue.

**Lux Padded Jacket**  
*for women, p. 126*



## Men

<b>ST2000</b> Classic-T	24	<b>ST8410</b> Active 140 Raglan	92
<b>ST2010</b> Classic-T Fitted	27	<b>ST8420</b> Active 140 Long Sleeve	98
<b>ST2020</b> Classic-T Organic	28	<b>ST8440</b> Active 140 Sleeveless	96
<b>ST2100</b> Comfort-T 185	33	<b>ST8450</b> Active 140 Polo	99
<b>ST2130</b> Comfort-T 185 Long Sleeve	56	<b>ST8600</b> Cotton Touch	102
<b>ST2300</b> Classic-T V-neck	45	<b>ST8830</b> Recycled Sports-T Move	106
<b>ST2500</b> Classic-T Long Sleeve	55	<b>ST8840</b> Recycled Sports-T Reflect	108
<b>ST2800</b> Classic Tank Top	52	<b>ST8850</b> Recycled Sports-T Race	109
<b>ST2810</b> Tank Top	53	<b>ST9000</b> Ben Crew Neck	39
<b>ST3000</b> Polo	68	<b>ST9010</b> Ben V-neck	50 (135)
<b>ST3400</b> Polo Long Sleeve	73	<b>ST9020</b> Morgan Crew Neck	38 (133)
<b>ST4000</b> Sweatshirt Classic	76	<b>ST9040</b> Morgan Long Sleeve	57
<b>ST4100</b> Sweat Hoodie Classic	80	<b>ST9050</b> Henry Polo	72
<b>ST4200</b> Sweat Hoodie Light	78	<b>ST9060</b> Harper Polo	70 (136)
<b>ST5010</b> Fleece Vest	115	<b>ST9080</b> Knit Long Sleeve	61
<b>ST5020</b> Fleece Half-Zip	116	<b>ST9100</b> Finest Cotton-T	41
<b>ST5030</b> Fleece Jacket	114	<b>ST9220</b> Slub Organic	31
<b>ST5040</b> Power Fleece Jacket	121	<b>ST9400</b> Shawn Slub Crew Neck	40
<b>ST5060</b> Melange Fleece Jacket	120	<b>ST9410</b> Shawn Slub V-neck	(134)
<b>ST5080</b> Hooded Fleece Jacket	117	<b>ST9430</b> Shawn Henley T-shirt	42
<b>ST5090</b> Striped Fleece Jacket	118	<b>ST9460</b> Shawn Henley Long Sleeve	60
<b>ST5420 Lux Padded Jacket</b>	<b>126</b>	<b>ST9600</b> Clive Crew Neck	34
<b>ST5430 Lux Padded Vest</b>	<b>129</b>	<b>ST9610</b> Clive V-neck	46
<b>ST5440 Lux Softshell Jacket</b>	<b>124</b>	<b>ST9620</b> Clive Long Sleeve	58
<b>ST5600</b> Sweat Hoodie Select	81	<b>ST9630</b> Clive Relaxed	36
<b>ST5610</b> Sweat Jacket Select	83	<b>ST9640 Clive Polo</b>	<b>66</b>
<b>ST5620</b> Sweatshirt Select	77	<b>ST9690</b> Dean Deep V-neck	49
<b>ST5630</b> Recycled Sweat Hoodie	84	<b>ST9691</b> Dexter Boxers	62
<b>ST5650</b> Recycled Sweatpants	85	<b>ST9692</b> Dexter Briefs	63
<b>ST5840</b> Recycled Scuba Jacket	110	<b>ST9850</b> David Oversized	(132)
<b>ST5850</b> Knit Fleece Jacket	119		
<b>ST7000</b> Lux	22		
<b>ST8000</b> Sports-T	88		
<b>ST8010</b> Sports Top	90		
<b>ST8020</b> Intense Tech	101		
<b>ST8030</b> Active 140 Team Raglan	94		
<b>ST8050</b> Piqué Polo	103		
<b>ST8400</b> Active 140 Crew Neck	95		

## Women

<b>ST2000</b> Classic-T	24	<b>ST8990</b> Seamless Tights	105
<b>ST2020</b> Classic-T Organic	28	<b>ST9110</b> Finest Cotton-T	41 (132)
<b>ST2160</b> Comfort-T 185	33	<b>ST9120</b> Megan Crew Neck	37 (133)
<b>ST2600</b> Classic-T Fitted	25	<b>ST9130</b> Megan V-neck	51 (134)
<b>ST2620</b> Classic-T Organic Fitted	29	<b>ST9150</b> Hanna Polo	70 (137)
<b>ST2700</b> Classic-T V-neck	45	<b>ST9180</b> Knit Long Sleeve	61
<b>ST2900</b> Classic Tank Top	52	<b>ST9320</b> Slub Organic	31
<b>ST3100</b> Polo	68 (137)	<b>ST9500</b> Sharon Slub Crew Neck	40
<b>ST4000</b> Sweatshirt Classic	76	<b>ST9510</b> Sharon Slub V-neck	(134)
<b>ST4110</b> Sweat Hoodie Classic	80	<b>ST9530</b> Sharon Henley T-shirt	42
<b>ST4200</b> Sweat Hoodie Light	78	<b>ST9580</b> Sharon Henley Long Sleeve	60
<b>ST5100</b> Fleece Jacket	114	<b>ST9700</b> Claire Crew Neck	34 (133)
<b>ST5110</b> Fleece Vest	115	<b>ST9710</b> Claire V-neck	46
<b>ST5120</b> Power Fleece Jacket	(137)	<b>ST9720</b> Claire V-neck Long Sleeve	59
<b>ST5190</b> Striped Fleece Jacket	118	<b>ST9730</b> Claire Relaxed	36
<b>ST5520 Lux Padded Jacket</b>	<b>126</b>	<b>ST9740 Claire Polo</b>	<b>66</b>
<b>ST5530 Lux Padded Vest</b>	<b>129</b>	<b>ST9950</b> Daisy Oversized	(132)
<b>ST5540 Lux Softshell Jacket</b>	<b>124</b>		
<b>ST5600</b> Sweat Hoodie Select	81		
<b>ST5630</b> Recycled Sweat Hoodie	84		
<b>ST5650</b> Recycled Sweatpants	85		
<b>ST5710</b> Sweat Jacket Select	83		
<b>ST5940</b> Recycled Scuba Jacket	110		
<b>ST5950</b> Knit Fleece Jacket	119		
<b>ST7000</b> Lux	22		
<b>ST7600</b> Lux Fitted	23		
<b>ST8100</b> Sports-T	88		
<b>ST8110</b> Sports Top	90		
<b>ST8120</b> Intense Tech	101		
<b>ST8130</b> Active 140 Team Raglan	94 (135)		
<b>ST8320</b> 3/4 Sports Tights	104		
<b>ST8330</b> Sports Bra	104		
<b>ST8500</b> Active 140 Raglan	92		
<b>ST8540</b> Active 140 Tank	97		
<b>ST8700</b> Cotton Touch	102		
<b>ST8930</b> Recycled Sports-T Move	106		
<b>ST8940</b> Recycled Sports-T Reflect	108		
<b>ST8950</b> Recycled Sports-T Race	109		

## Unisex

<b>ST2000</b> Classic-T	24
<b>ST2020</b> Classic-T Organic	28
<b>ST4000</b> Sweatshirt Classic	76
<b>ST4200</b> Sweat Hoodie Light	78
<b>ST5600</b> Sweat Hoodie Select	81
<b>ST5630</b> Recycled Sweat Hoodie	84
<b>ST5650</b> Recycled Sweatpants	85
<b>ST7000</b> Lux	22

## Children

<b>ST2200</b> Classic-T Kids	26
<b>ST2220</b> Classic-T Organic Kids	30
<b>ST3200</b> Polo Kids	69
<b>ST8170</b> Sports-T Kids	89
<b>ST8570</b> Active 140 Raglan Kids	93

**Lux Padded Jacket**  
for women, p. 126

**Lux Padded Vest**  
for men, p. 129

For the production of this catalogue we have chosen sustainable printing:



The PEFC Council (Programme for the Endorsement of Forest Certification schemes) is an independent, non-profit, nongovernmental organization, founded in 1999 which promotes sustainably managed forests through independent third party certification. The PEFC provides an assurance mechanism to purchasers of wood and paper products that they are promoting the sustainable management of forests.

**blanc**  
PROMOTIE TEXTIEL

